



Tow-Trust Towbars

Important: Please read General Notes overleaf before fitting



Issue 1

TC713B FIAT FULLBACK 2016> / MITSUBISHI L200 2006>

Item	Qty	Description	Item	Qty	Description
A	1	TC713B Crossmember	G	2	M16 x 60 Bolts & Nyloc Nuts
B	2	Side Arms	H	12	M12 x 40 Bolts, 8 Nyloc Nuts & 4 S/P Washers
C	2	Angle Brackets	J	2	M12 x 35 Bolts & Nyloc Nuts (Club Cab Only)
D	2	Chassis Adaptors (Club Cab Only)	K	4	M14 x 40 Bolts, Nyloc Nuts & 2 S/P Washers
E	1	Coupling Spacer	L	24	12 x 25 Flat Washers
F	4	M12 Clamp Plates	M	8	14 x 27 Flat Washers

Vehicles With Bumper Or Chrome Step.

1. One side at a time remove the three existing nuts securing the bumper step to chassis member and remove the existing spacer and clamp plate with captive bolts, insert Item **B** into the gap where the spacer was and fix in place using Item **H** with Item **L** and Item **F** at the forward most mounting point. (Club Cab models will also require Item **D** to be fitted at this stage, see image below).

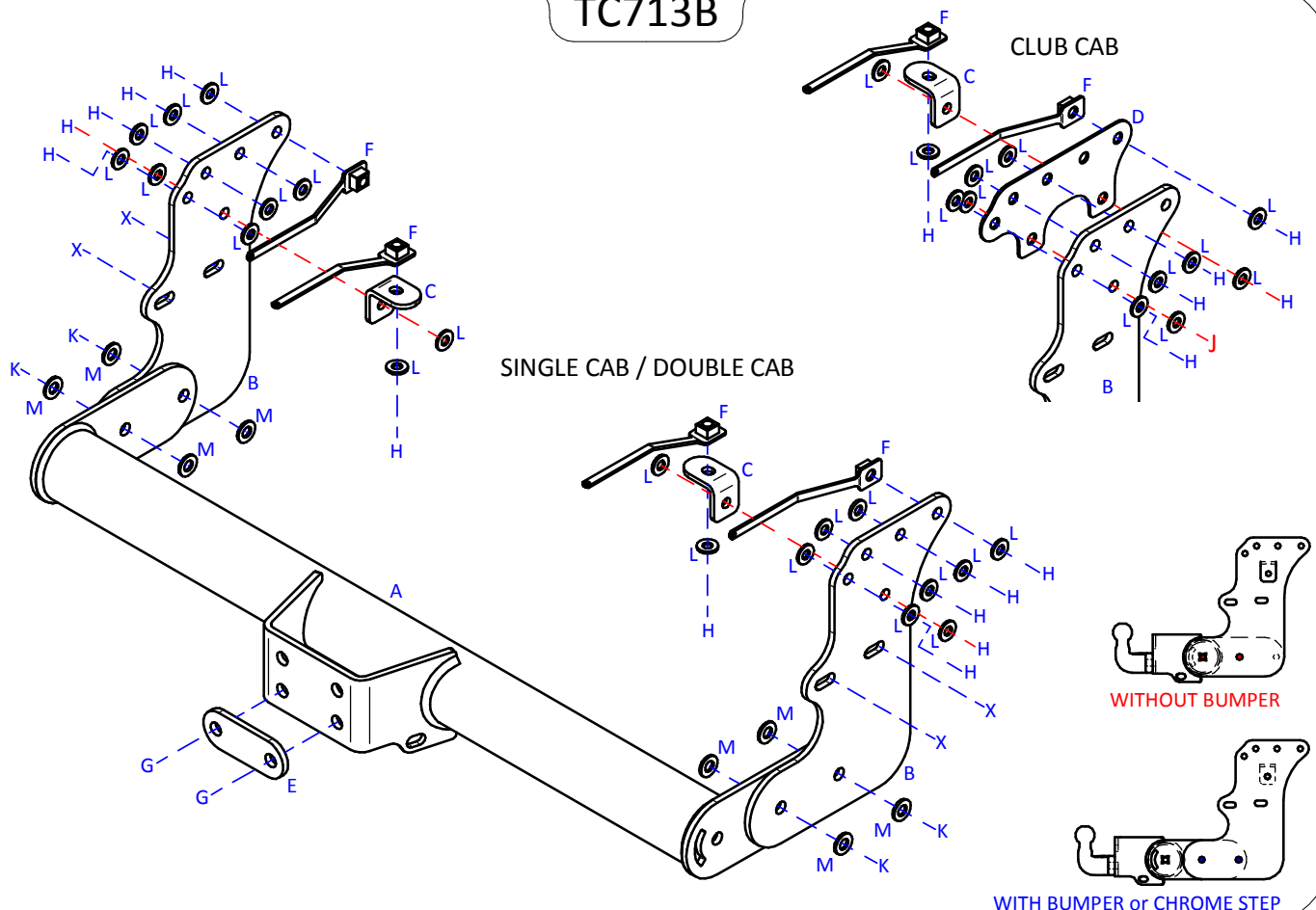
Vehicles With No Bumper Or Chrome Step.

1. Remove the two fixings either side securing the under run bar. Discard bar and fixings.
2. Using Item **H** with Item **L** fix Items **B** to each chassis member using Item **F** at the forward most mounting point. (Club Cab models will also require Item **D** to be fitted at this stage, see image below).

All Models

1. Locate Item **F** inside each chassis member and line up with the vertical mounting point, using Item **H** with Item **L** fix Items **C** to Items **B** and the vertical mounting point. (Club Cab models also require Item **J** and Item **L** to fix Item **B** and Item **D** together).
2. Using Item **K** with Item **M** fix Item **A** between each side arm.
3. Using Item **G** and Item **E** fix your desired ball bracket and wiring plate (not supplied in this kit) to Item **A**.
4. Fully tighten all fixings ensuring the Towbar is rigid, square and secure.

TC713B



Note:

1. Recommended Torque Setting for M12 Grade 10.9 -130 Nm. (For other Torque Settings see notes overleaf.)
2. Nose load limits and vehicle manufacturers trailer / caravan weight limits must be observed.