

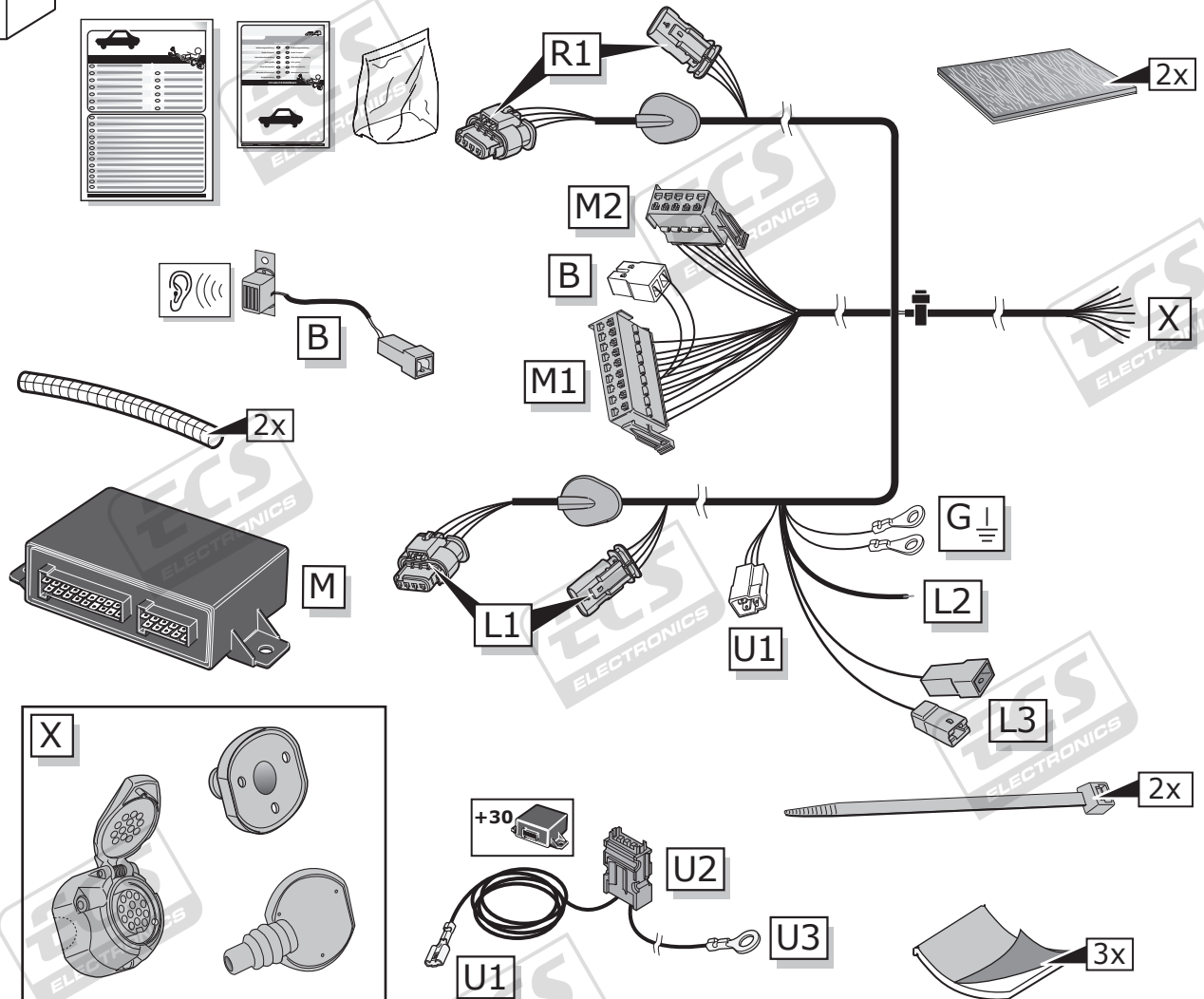
**Fiat Panda (319) 02/2012-, 4x4 10/2012-
Fiat Panda (319) Trekking 10/2012-, Cross 10/2014-**

Partnr.: FI-036-DHU

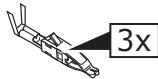
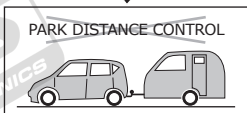
- Fitting instructions electric wiring kit tow bar with 13-P socket up to DIN/ISO Norm 11446.
- We would expressly point out that assembly not carried out properly by a competent installer will result in cancellation of any right to damage compensation, in particular those arising by virtue of the product liability act.
- Contents of these kits and their fitting manuals are subject to alteration without notice, please ensure that these instructions are read and fully understood before commencing installation.
- Do not overload circuits; the maximum loads per connection are detailed in this manual.
- Attention! Before Installation, please read this manual carefully and inform your customer to consult the vehicle owners manual to check for any vehicle modifications required before towing.
- In the event of functional problems, troubleshooting must be limited to about 0.5 hours, contact the technical support:
t.skinner@ecs-electronics.com / 07440 202 052.



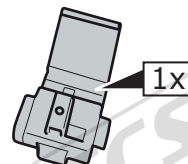
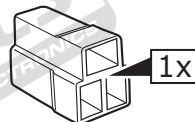
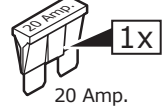
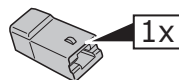
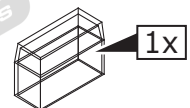
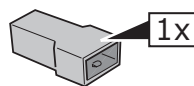
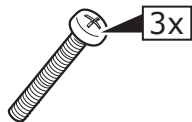
Part list



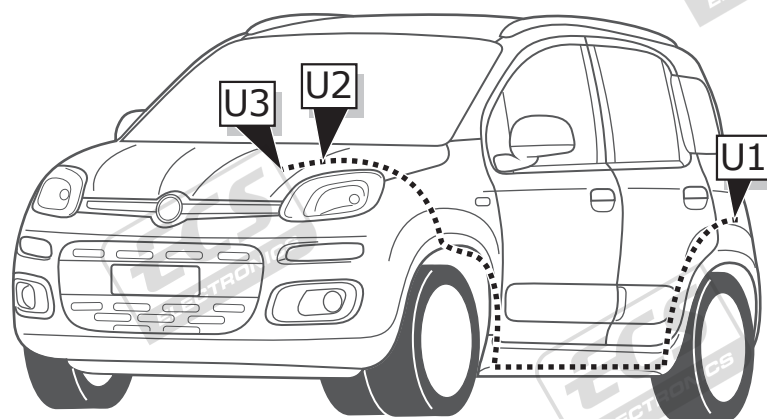
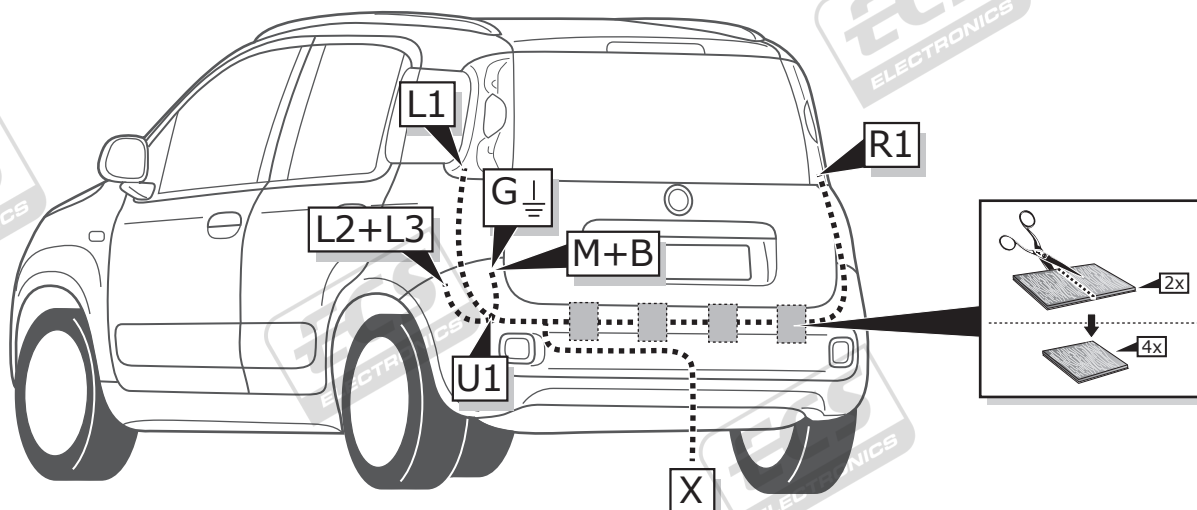
PARK DISTANCE CONTROL



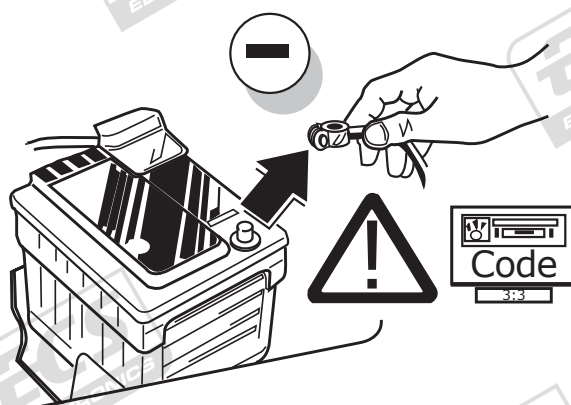
Pag. 13



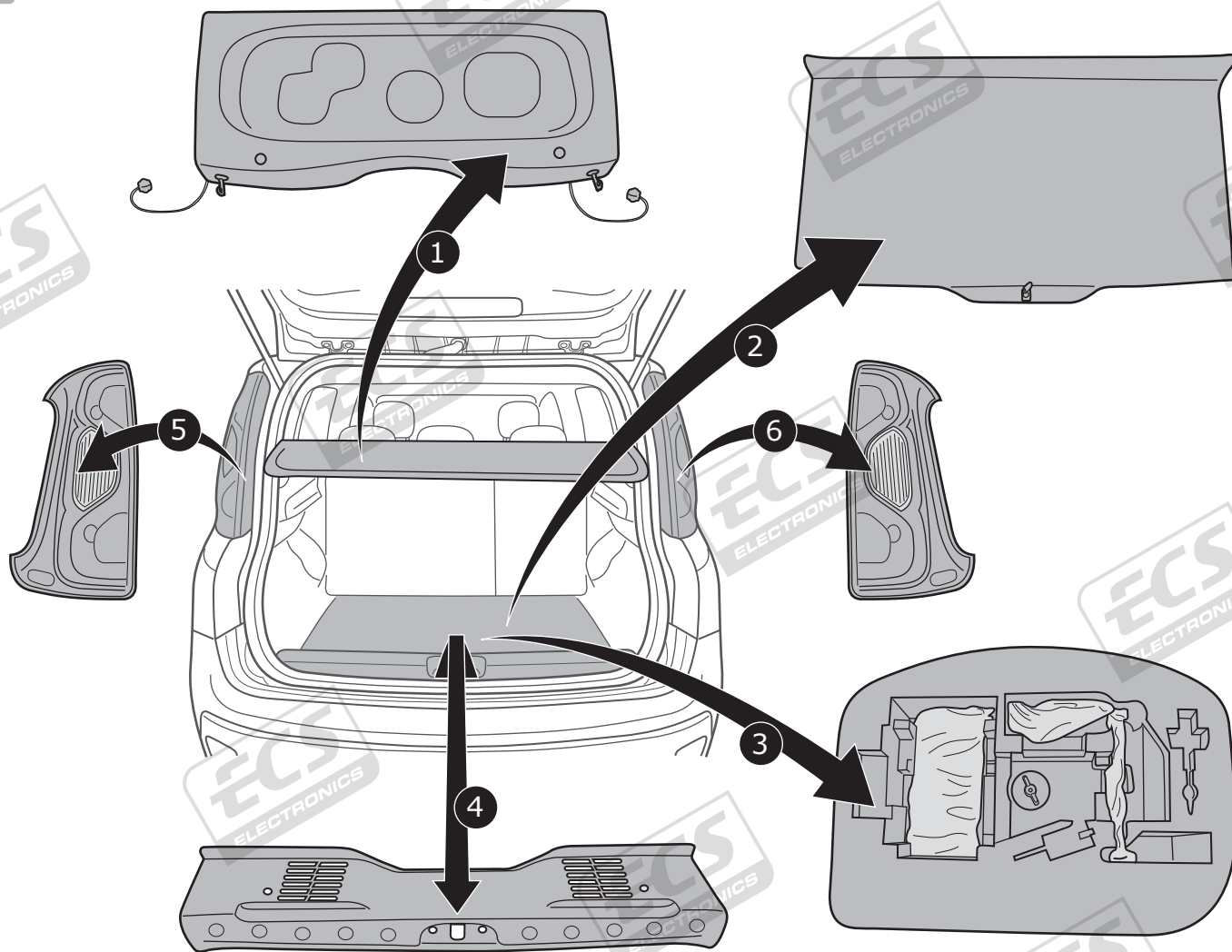
ROUTING



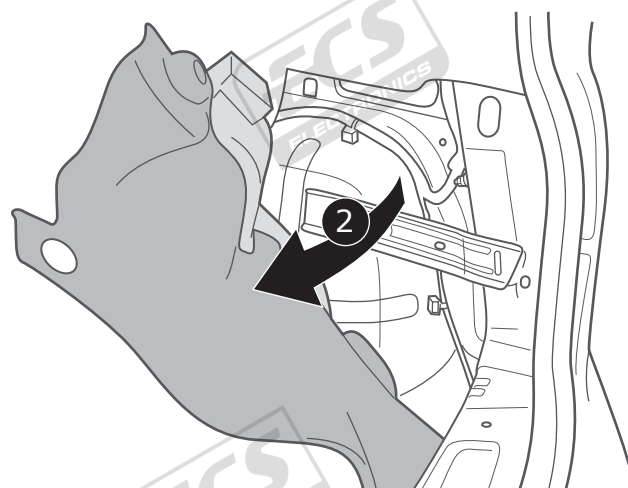
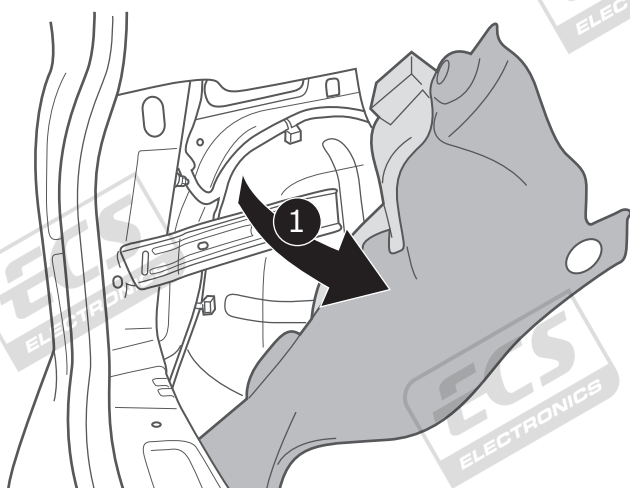
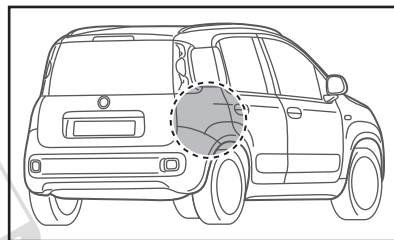
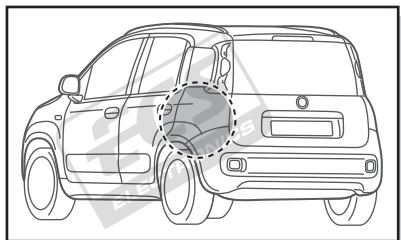
1

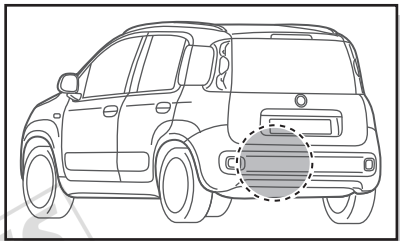


2

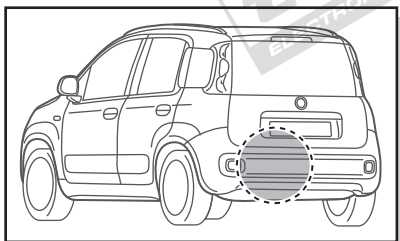
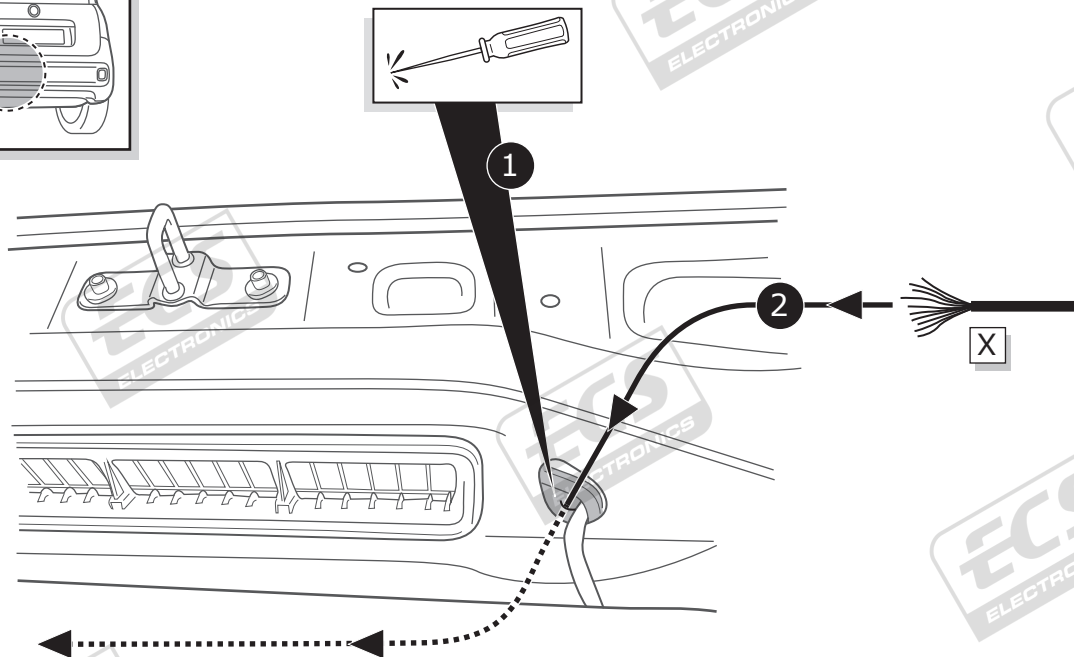


3

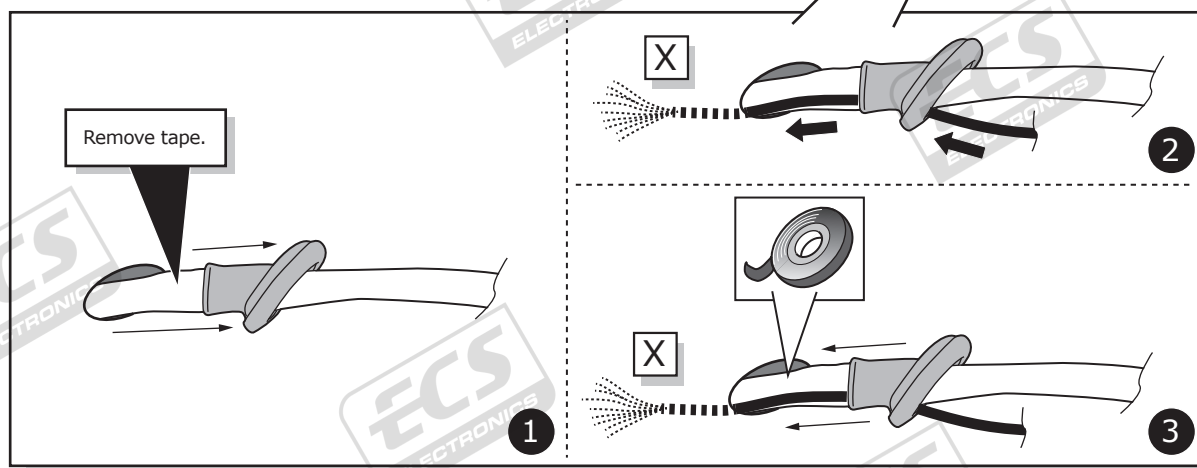
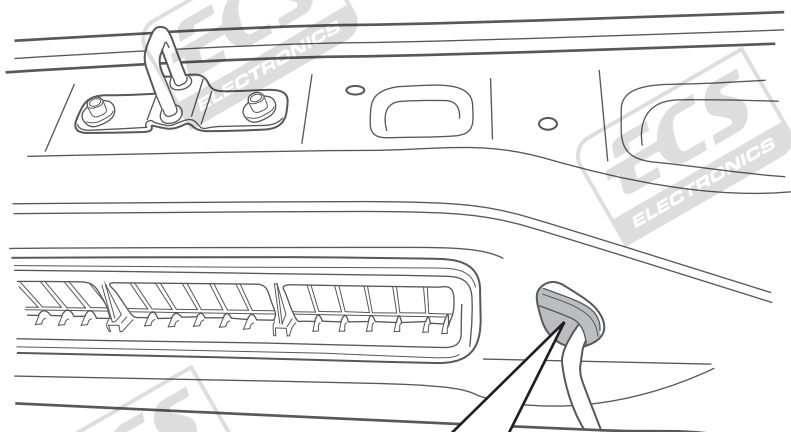


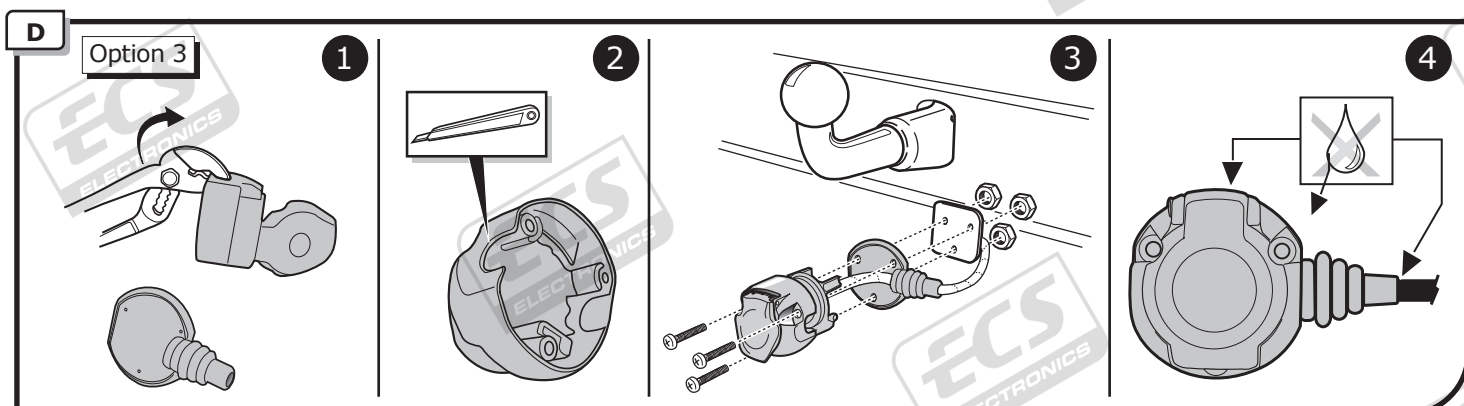
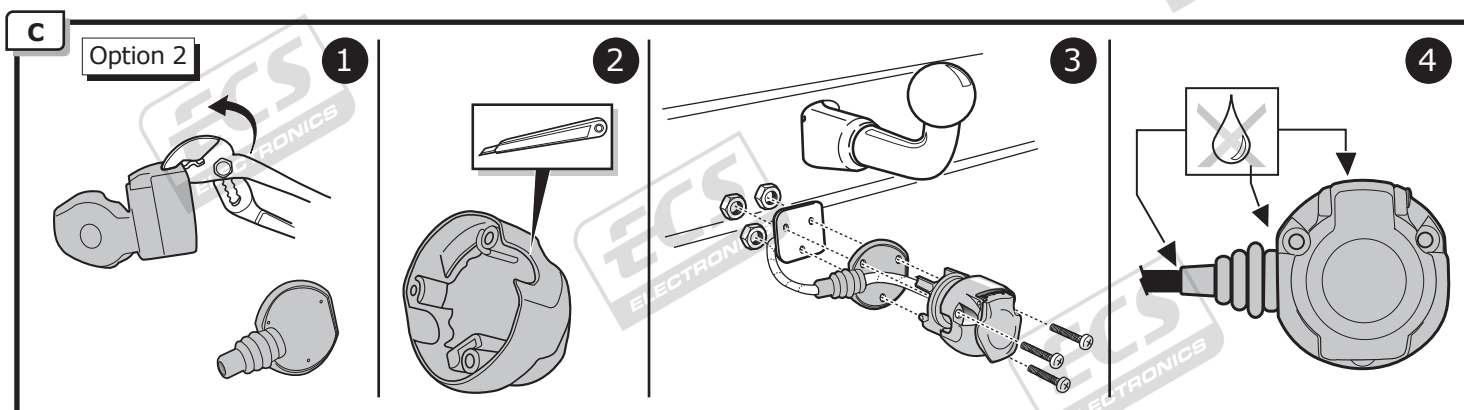
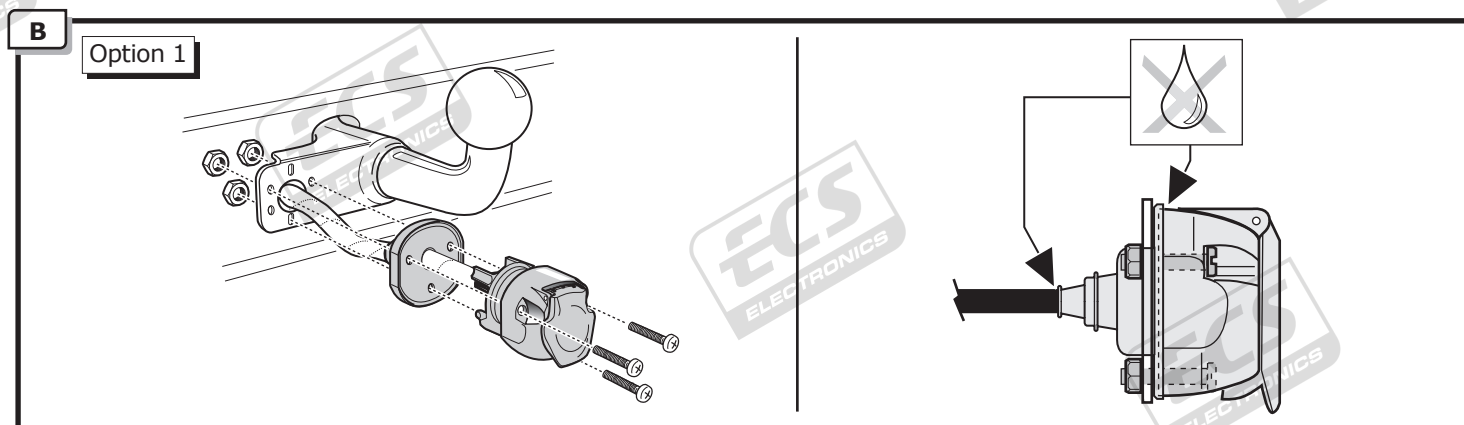
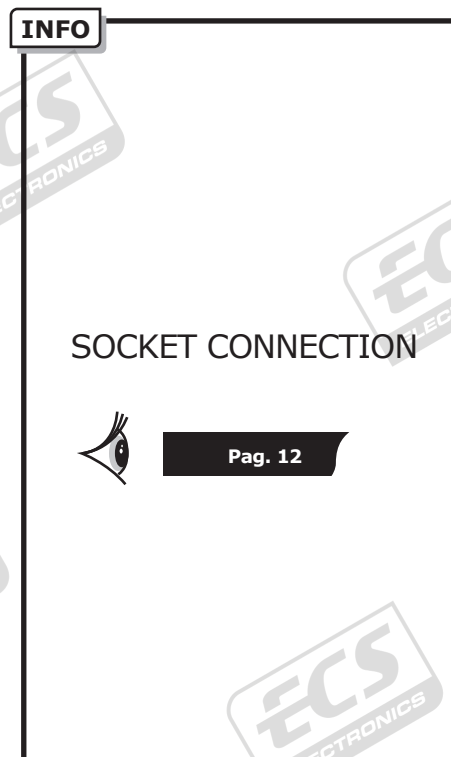
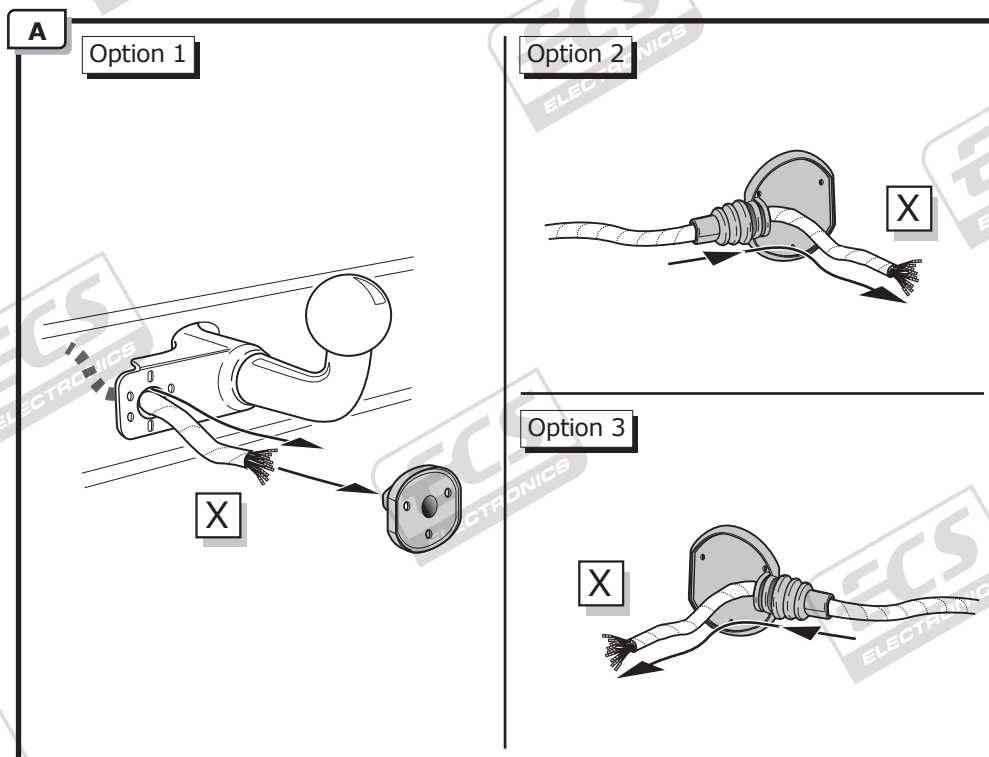


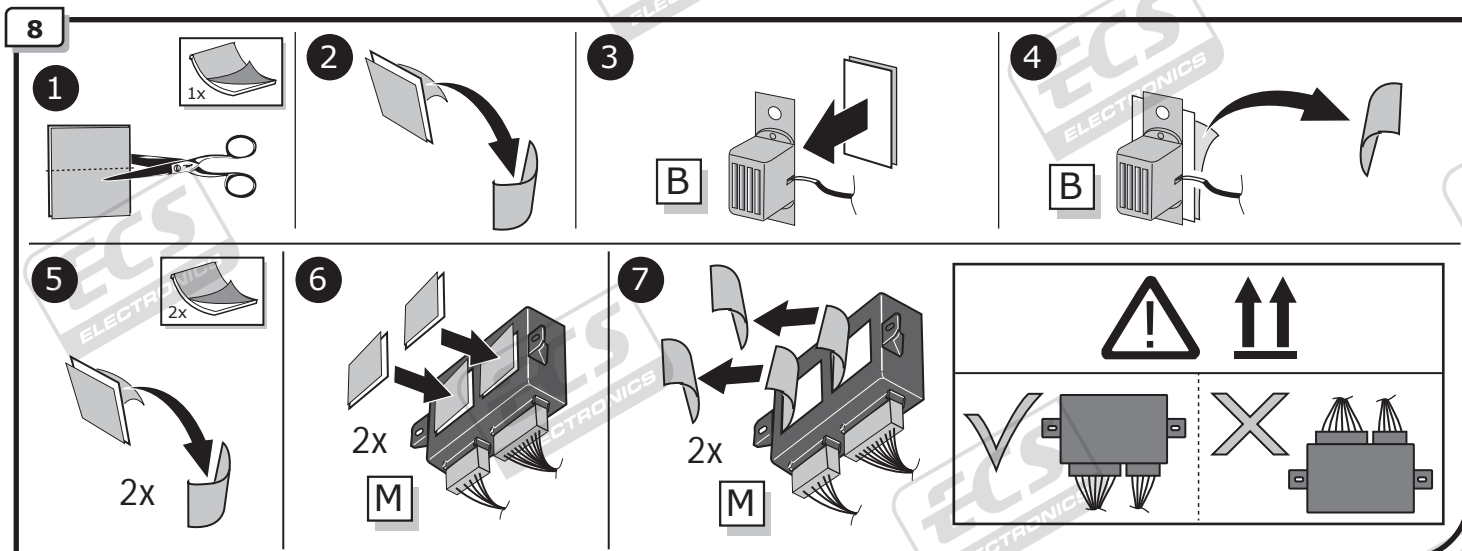
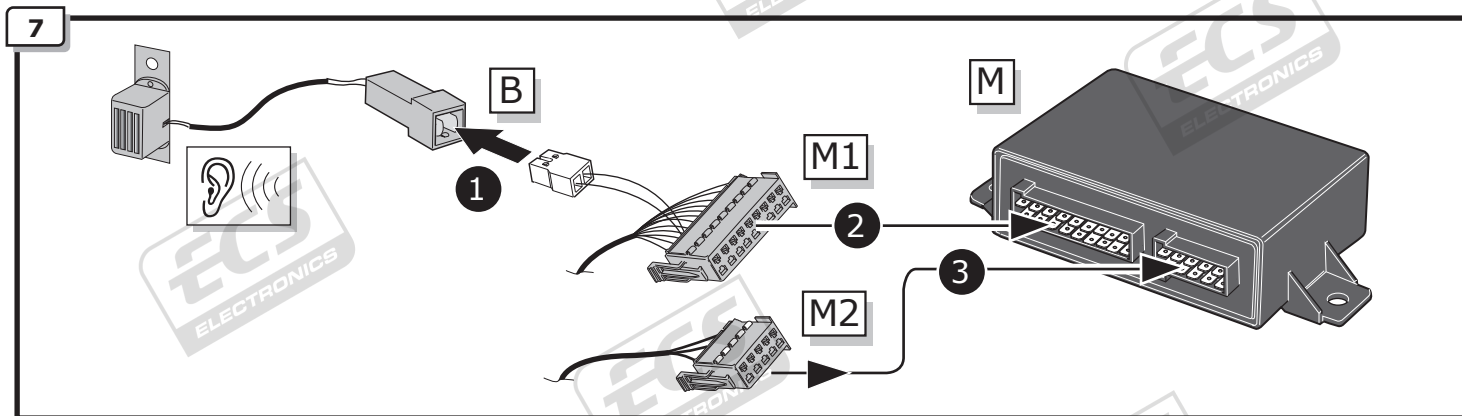
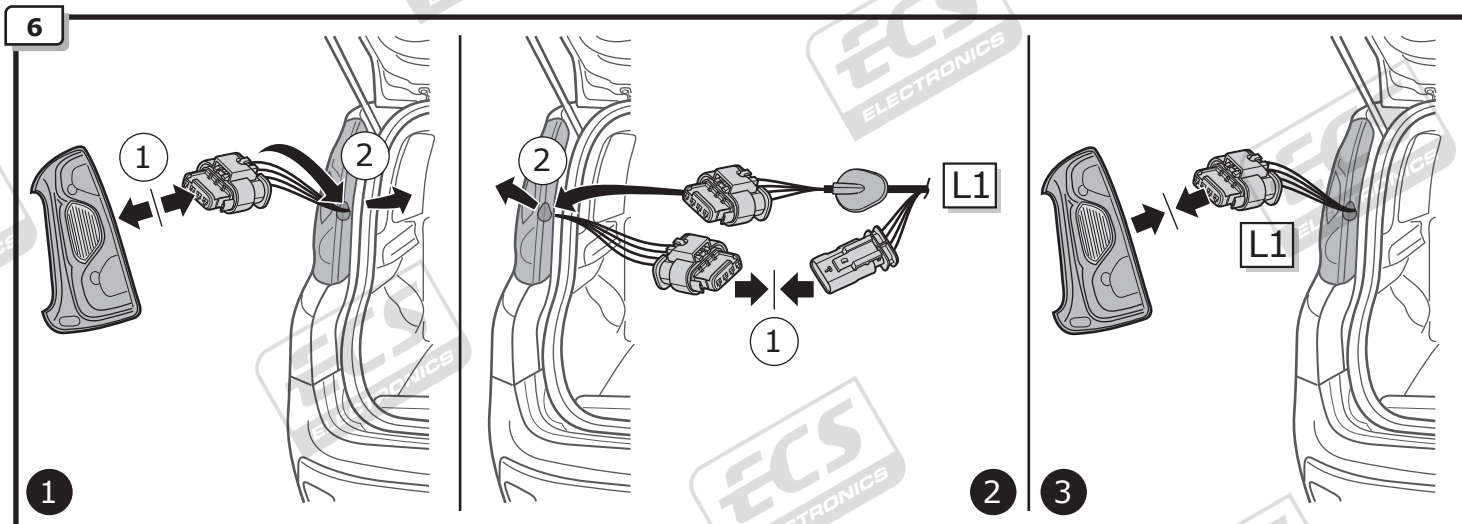
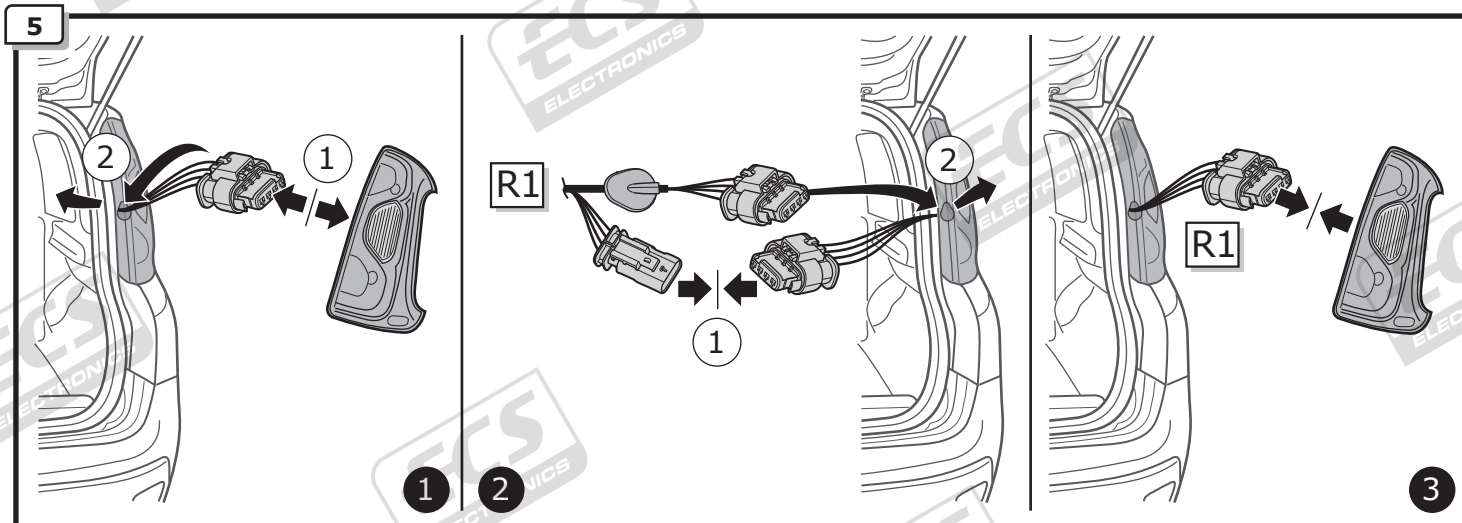
Option 1



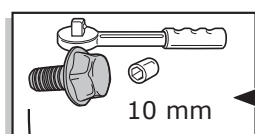
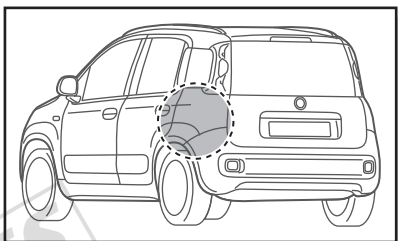
Option 2







9



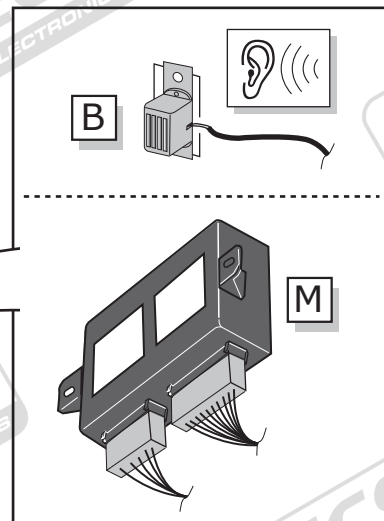
2

3

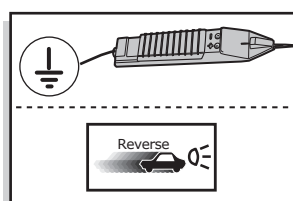
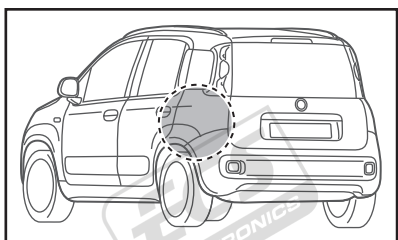
1

B

M

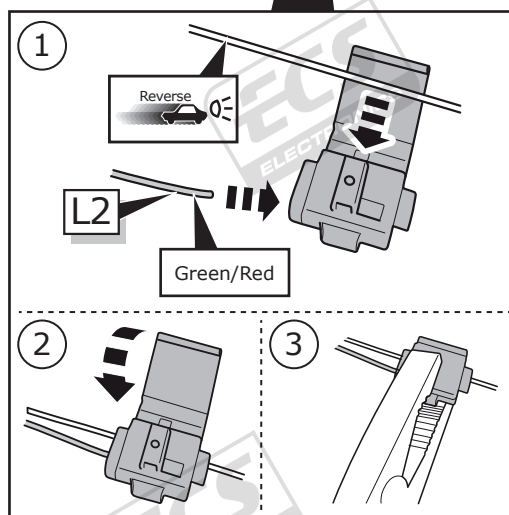


10

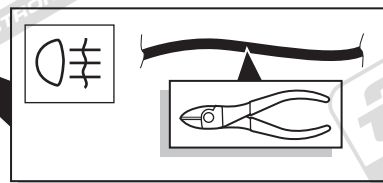
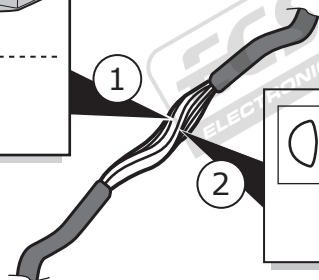
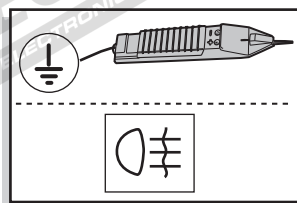
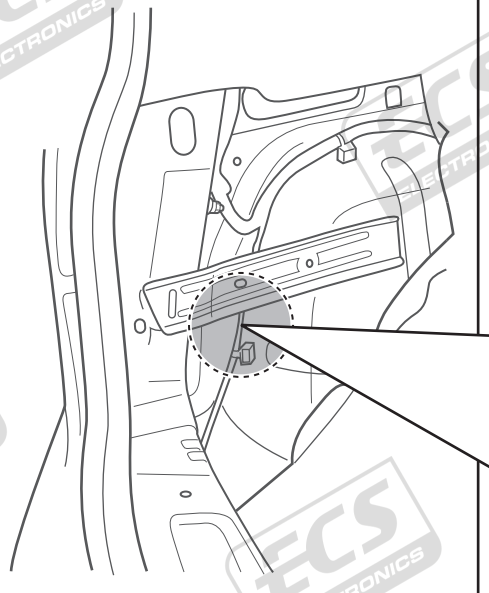
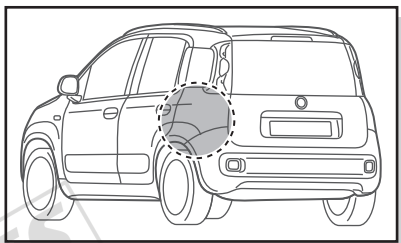


1

2



11



1

2



1



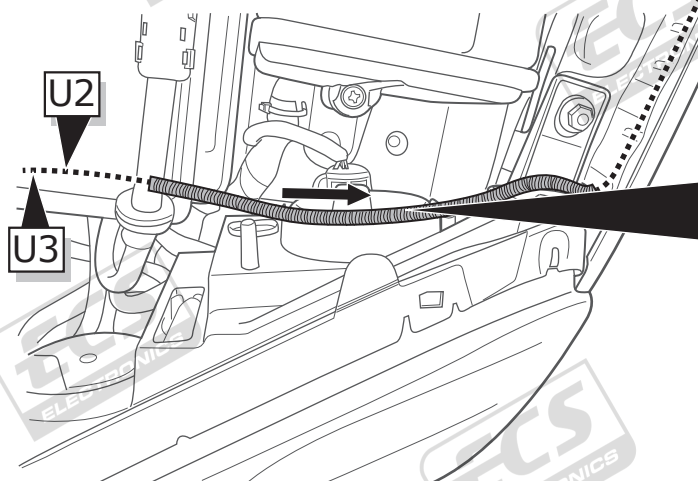
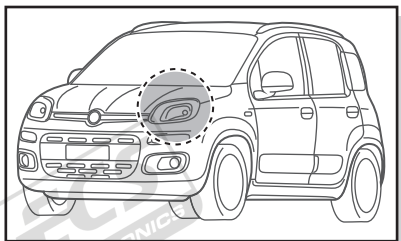
2



L3

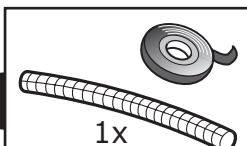
3

12



U2

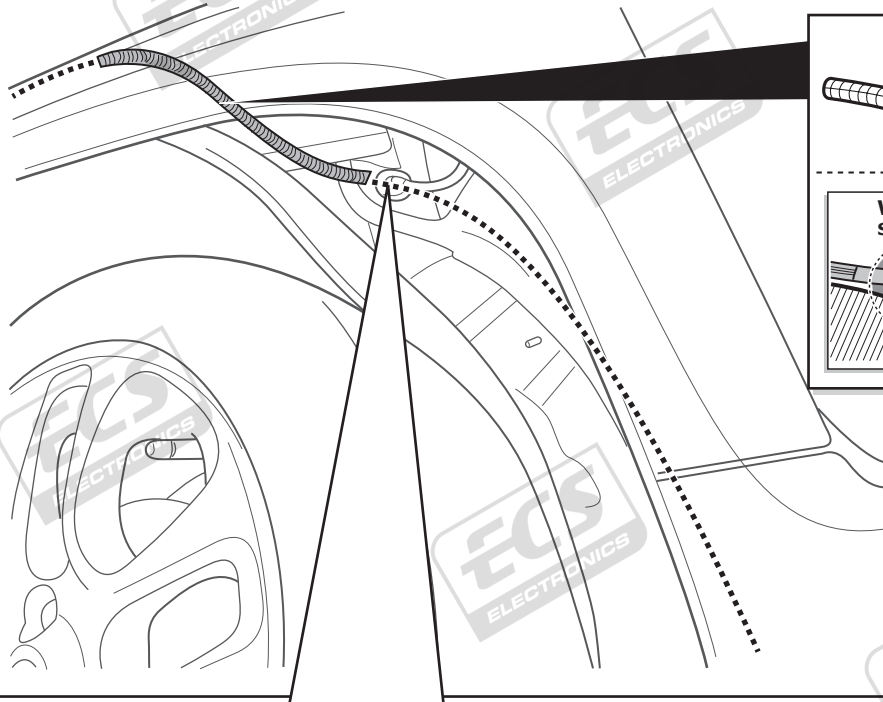
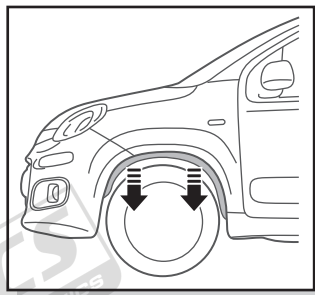
U3



1x

WARNING
Sharp edges

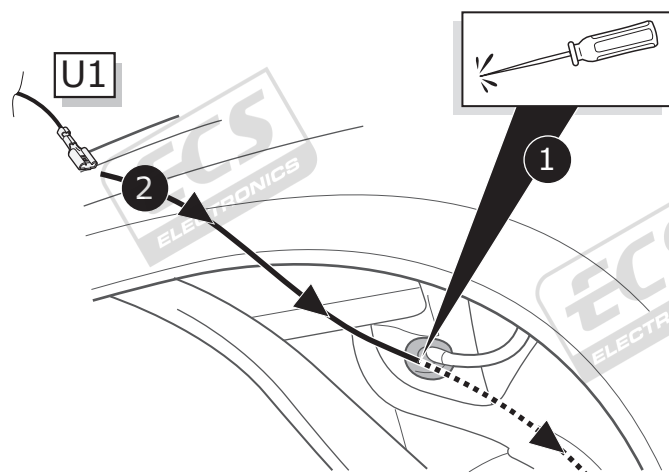




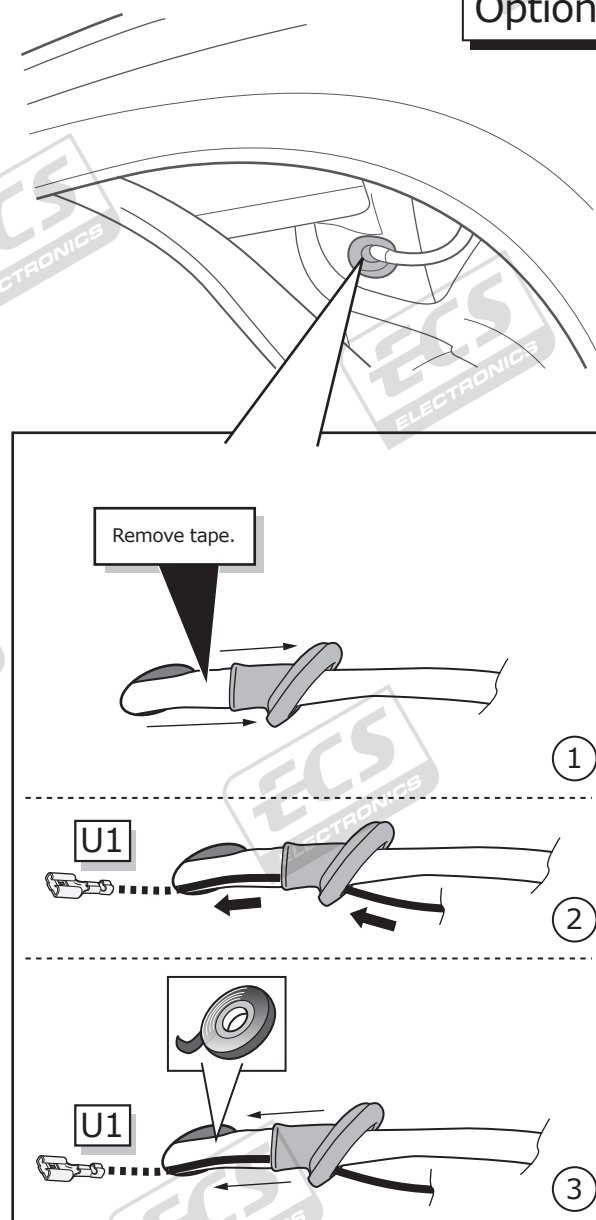
1x

WARNING
 Sharp edges

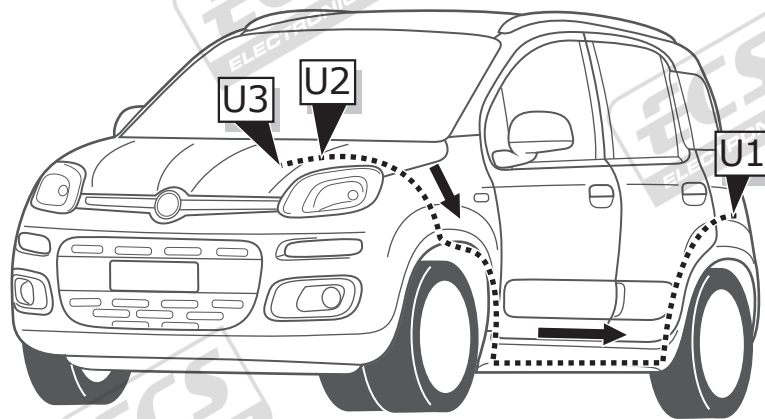

Option 1



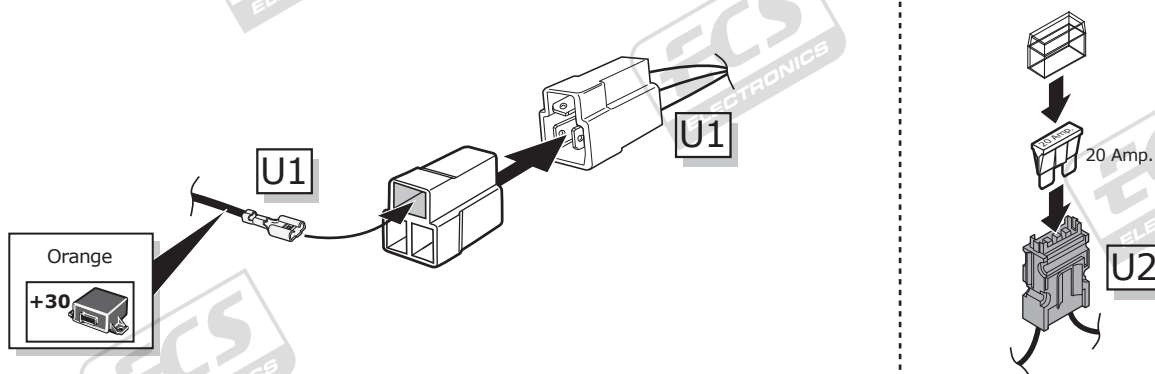
Option 2



14



15



16



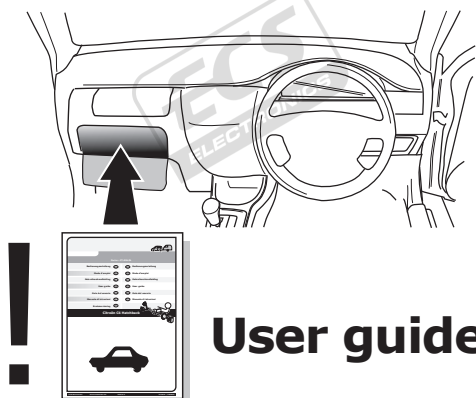
17

! TEST ALL THE CIRCUITS WITH A TEST DEVICE WITH THE CORRECT POWER LOAD FOR EACH FUNCTION. A TEST DEVICE WITH LED'S CANNOT BE USED FOR THIS PURPOSE.

INFO

REINSTALL TRIM.

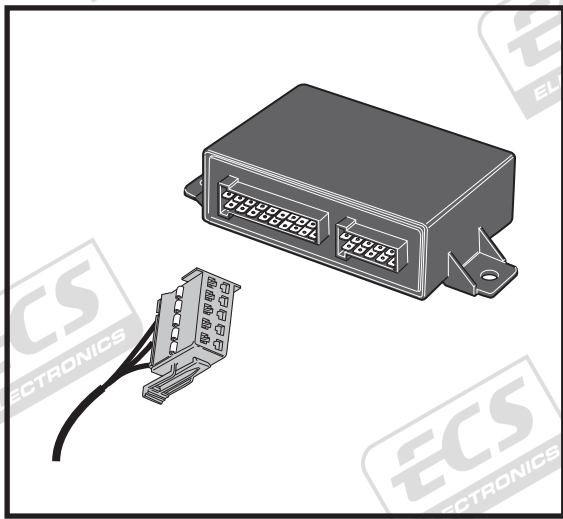
18



INFO

SOCKET CONNECTION

DIN/ISO 11446													
	1/L	2	3/31	4/R	5/58-R	6/54	7/58-L	8	9	10	11	12	13
Pmax	21W	21W		21W	42W	3x21W	42W	21W	180W/15Amp	180W/15Amp			
Colour	Yellow	Blue	White	Green	Brown	Red 1,00 mm ²	Black	Black/ Red	Brown/ White	Red 2,50 mm ²	White	-	White



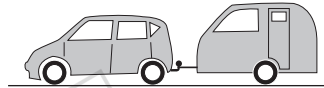
Option



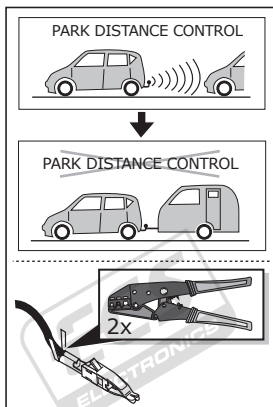
PARK DISTANCE CONTROL



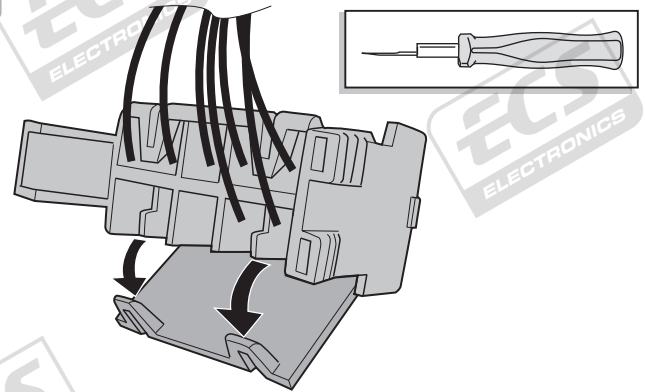
PARK DISTANCE CONTROL



A

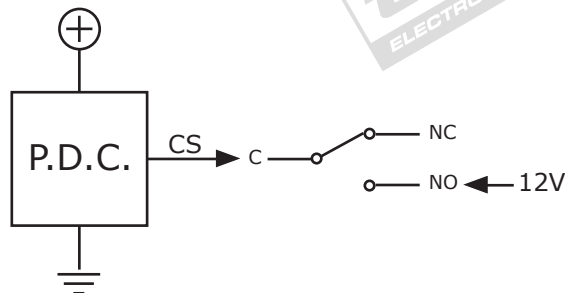


B

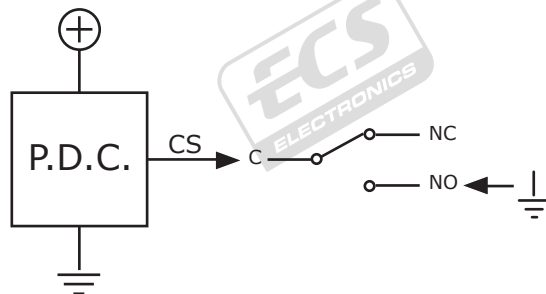


C

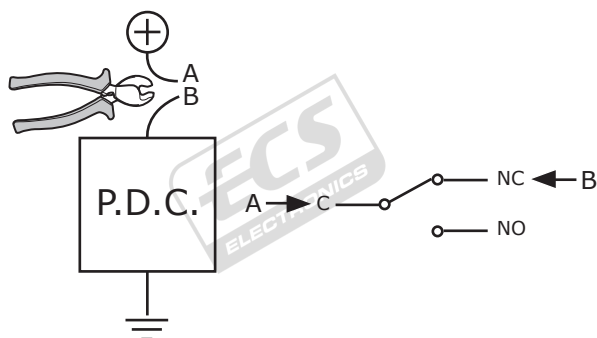
Option A



Option B



Option C



9 = C
5 = NO
7 = NC

