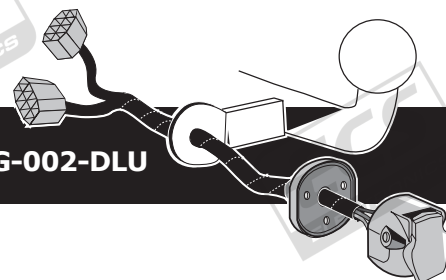


## Jaguar XF 2008

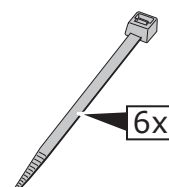
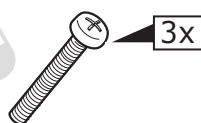
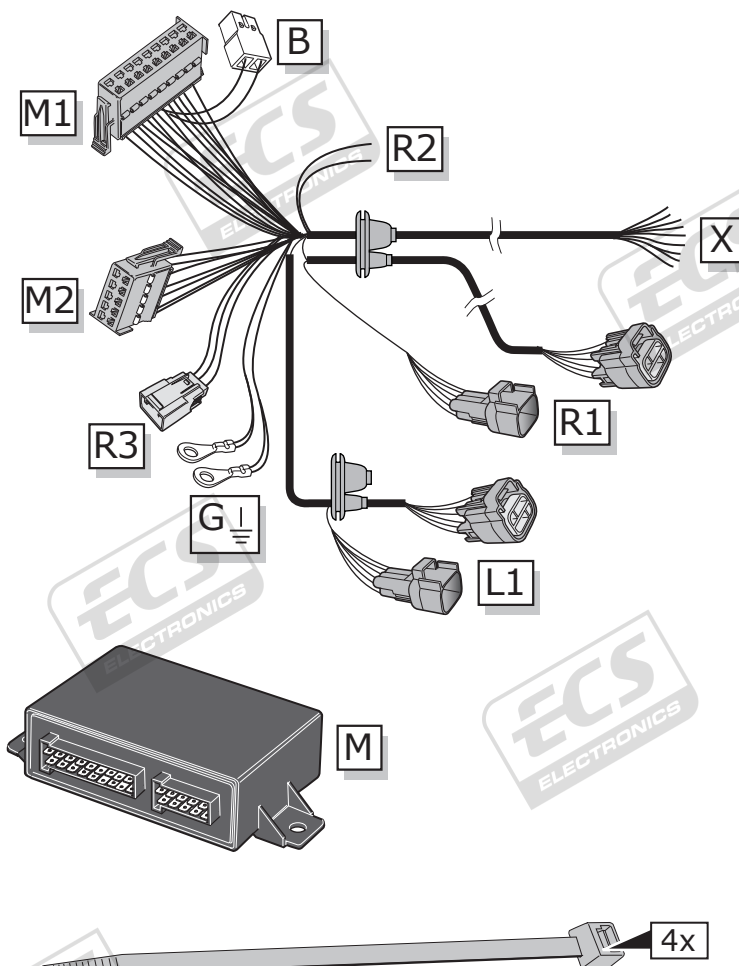
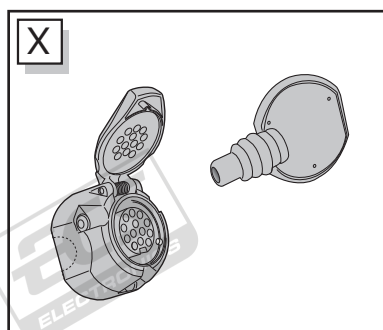
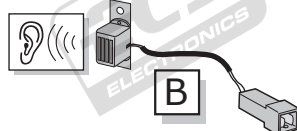
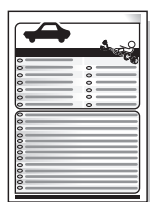
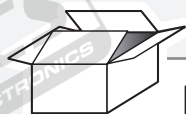
Partnr.: JG-002-DLU



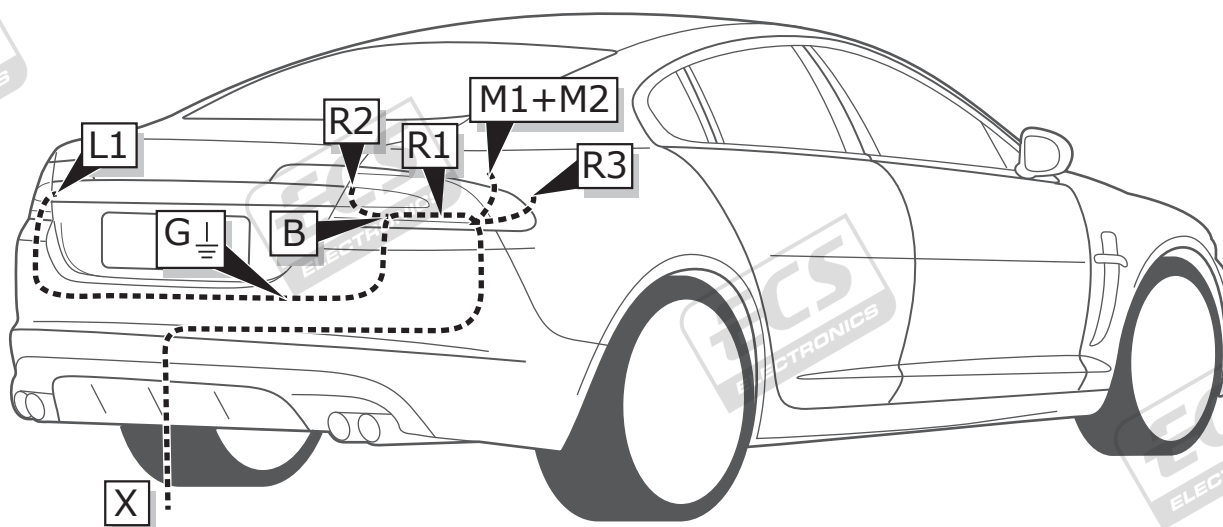
- Fitting instructions electric wiring kit tow bar with 13-P socket up to DIN/ISO Norm 11446.
- We would expressly point out that assembly not carried out properly by a competent installer will result in cancellation of any right to damage compensation, in particular those arising by virtue of the product liability act.
- Contents of these kits and their fitting manuals are subject to alteration without notice, please ensure that these instructions are read and fully understood before commencing installation.
- Do not overload circuits; the maximum loads per connection are detailed in this manual.
- Attention! Before Installation, please read this manual carefully and inform your customer to consult the vehicle owners manual to check for any vehicle modifications required before towing.
- In the event of functional problems, troubleshooting must be limited to about 0.5 hours, contact the technical support:  
[t.skinner@ecs-electronics.com](mailto:t.skinner@ecs-electronics.com) / 07440 202 052.



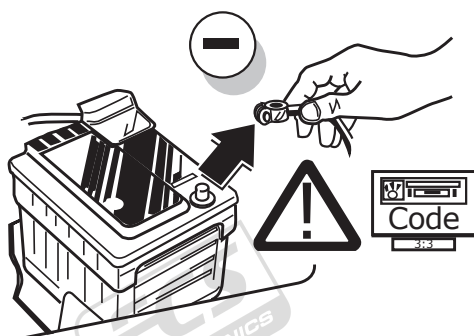
# Part list



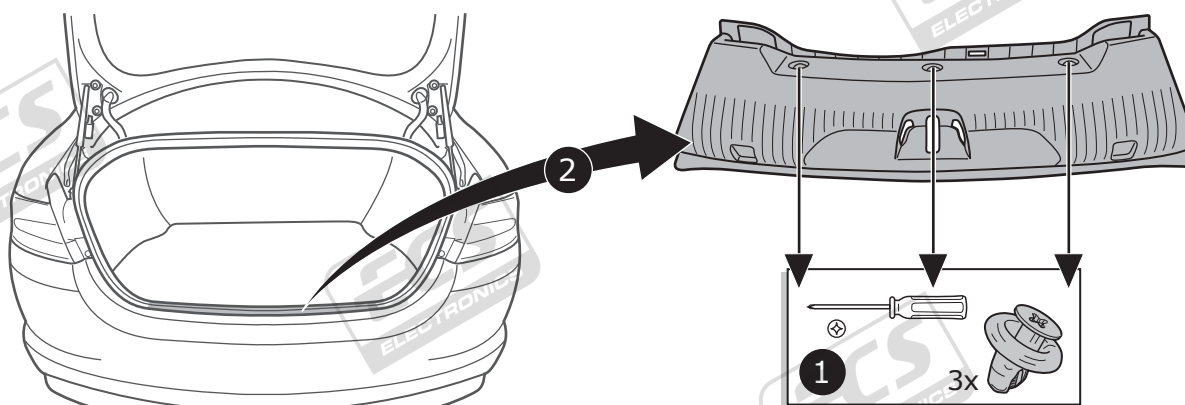
## ROUTING



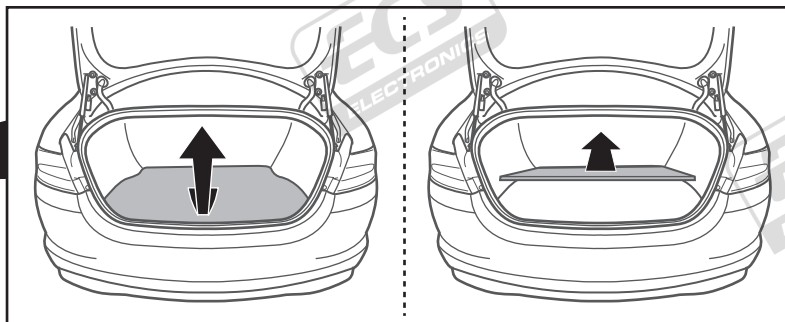
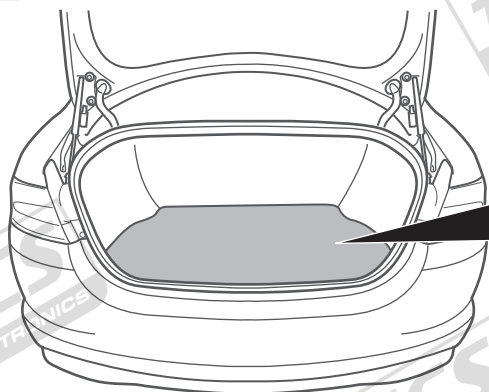
1



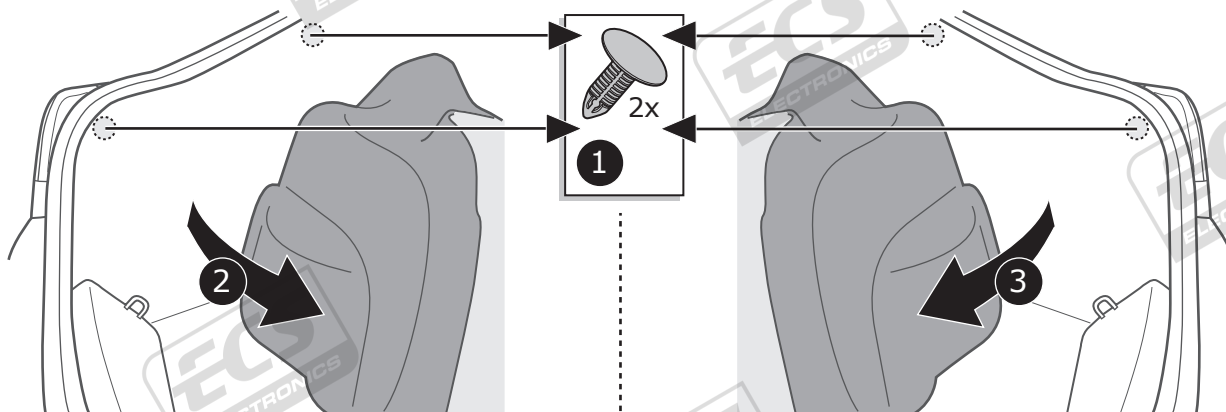
2



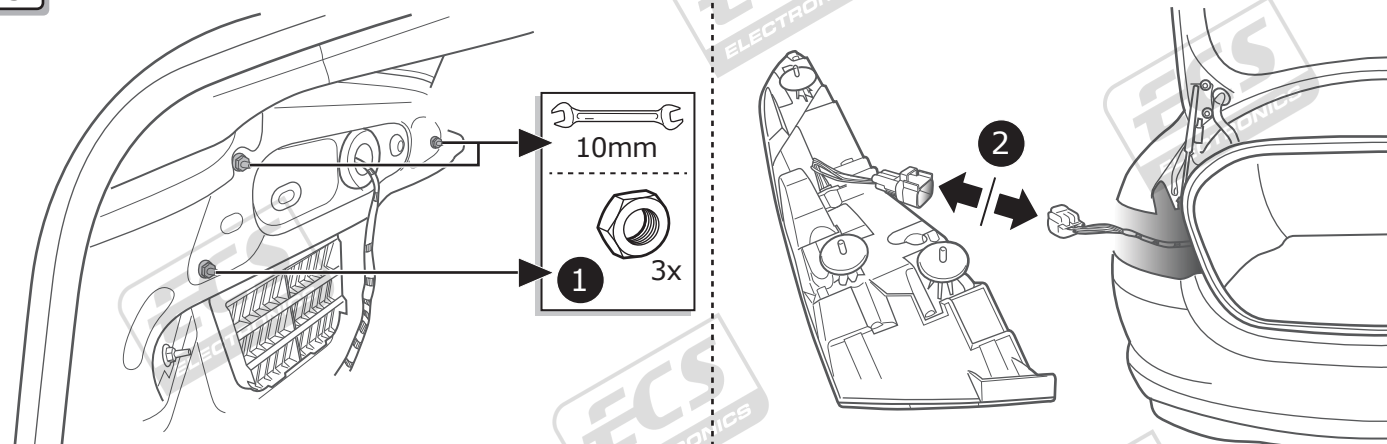
3



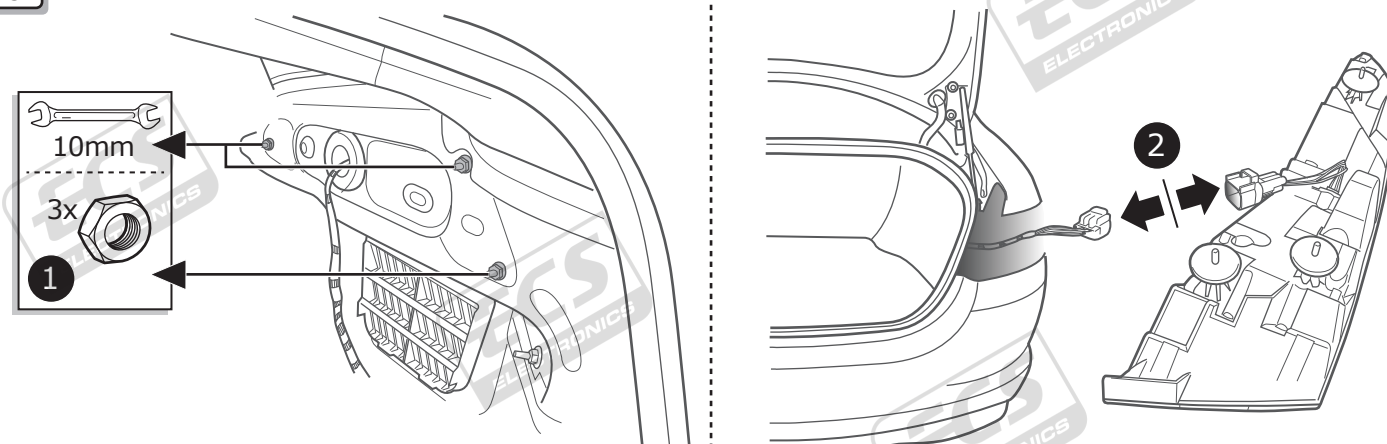
4



5

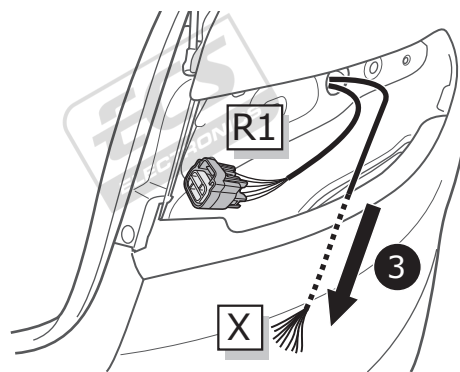
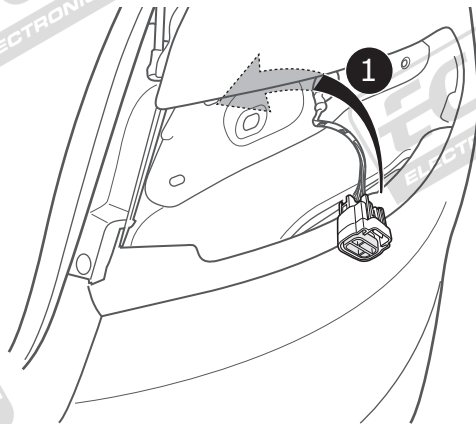
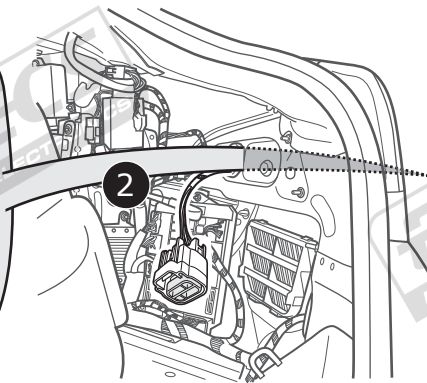
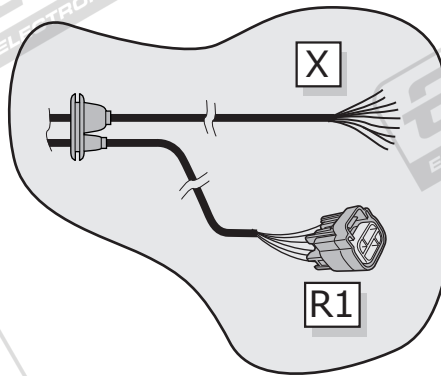
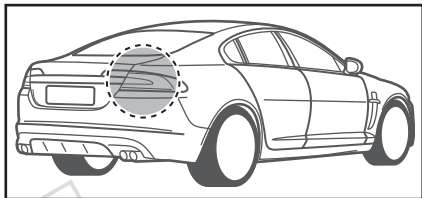


6



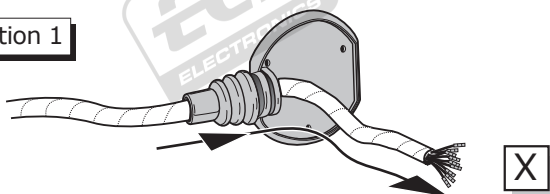


7

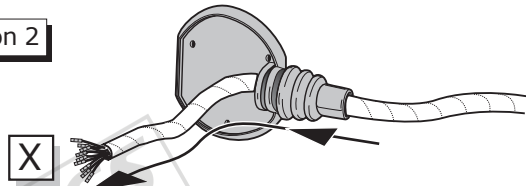


A

Option 1



Option 2



INFO

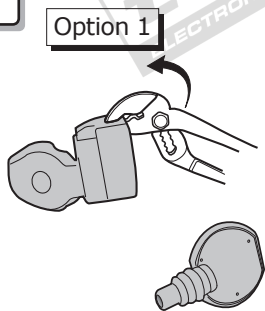
SOCKET CONNECTION



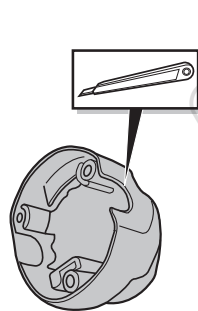
Pag. 10

B

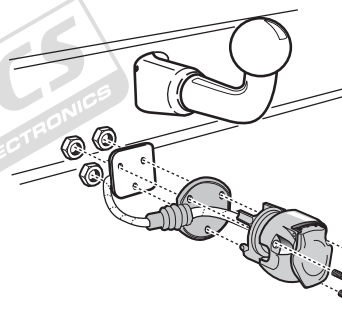
Option 1



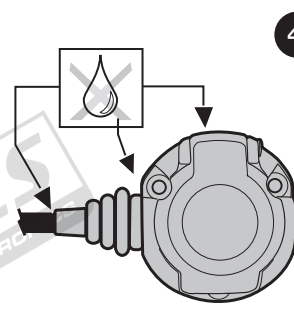
1



2



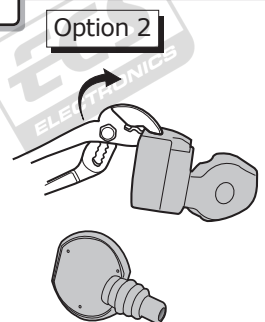
3



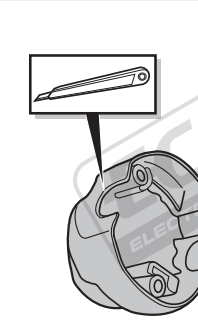
4

C

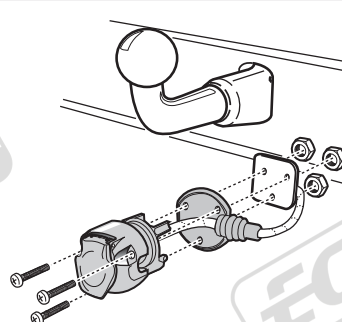
Option 2



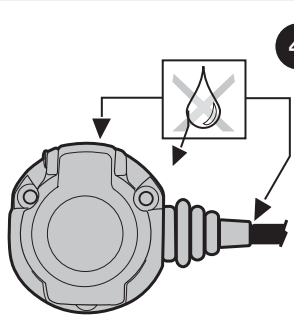
1



2

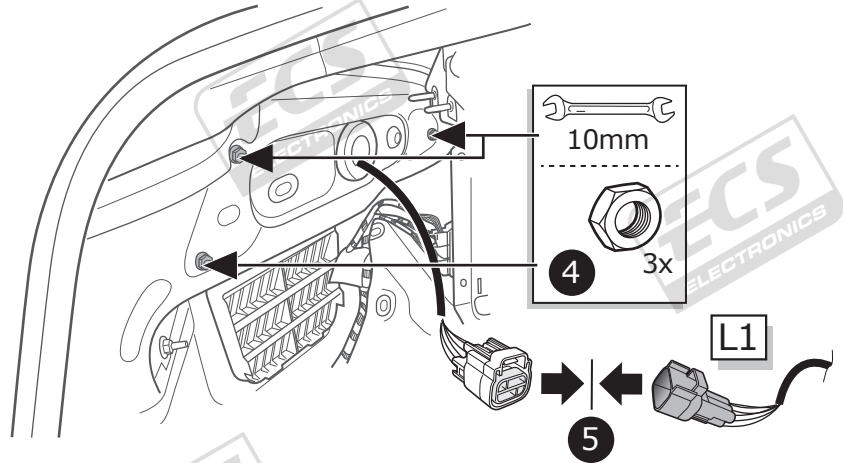
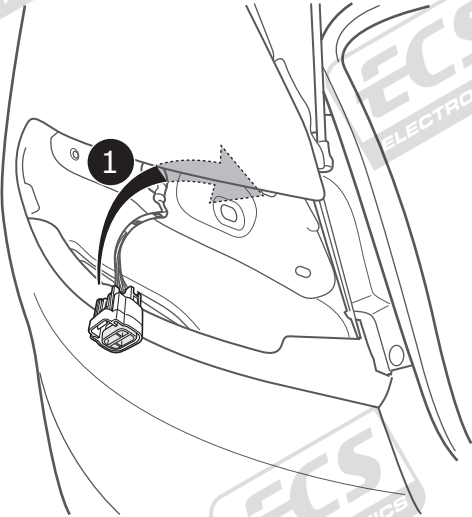
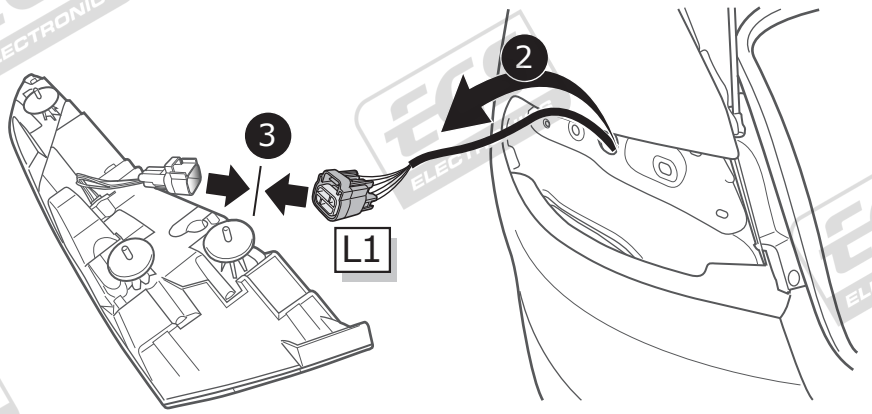
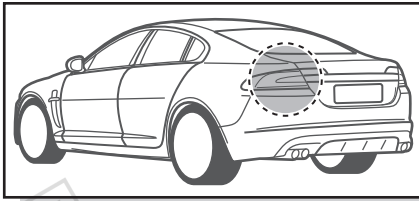


3

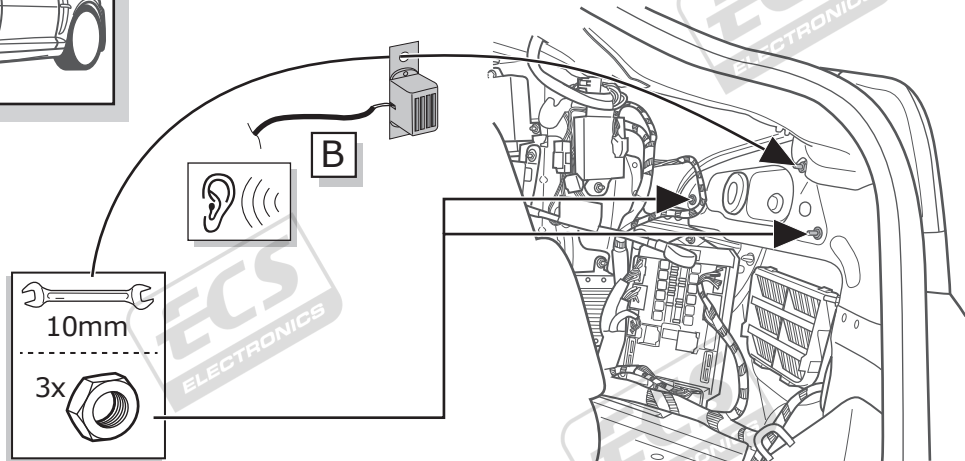
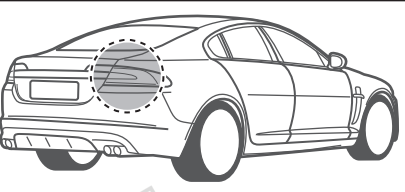
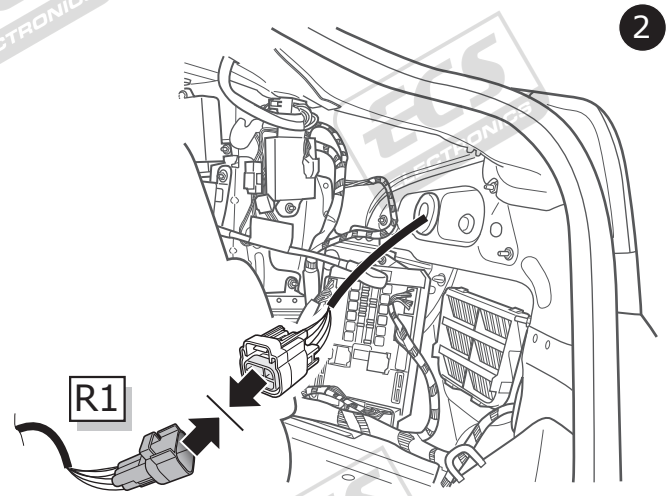
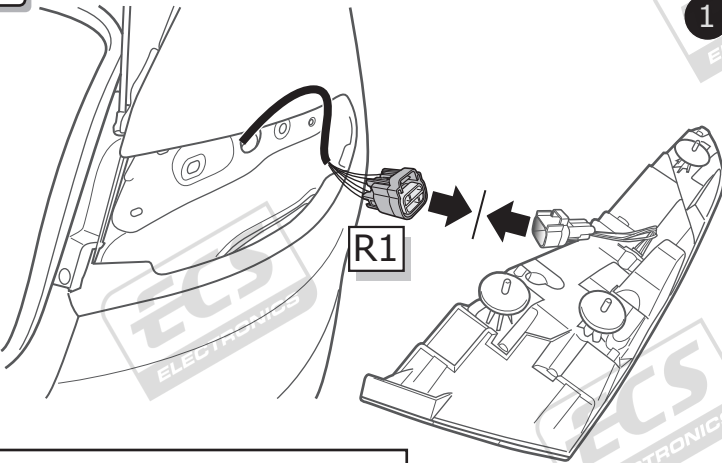


4

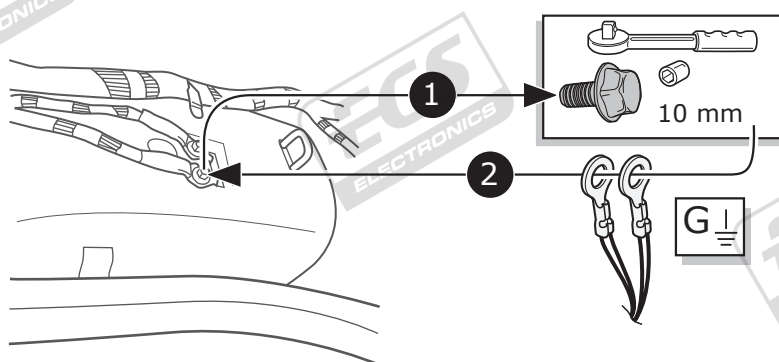
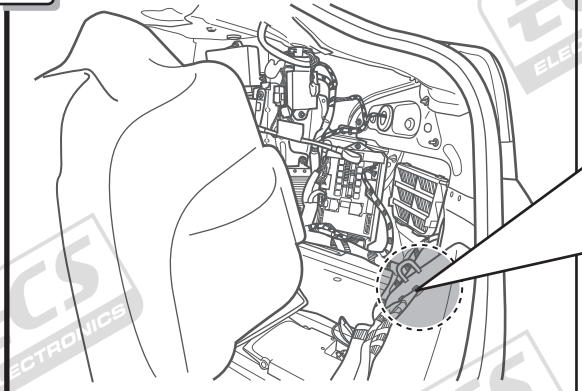
8



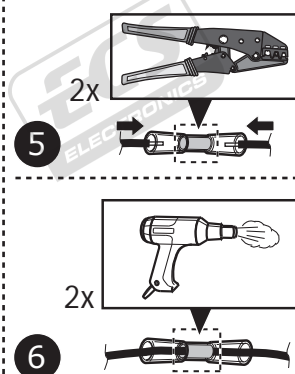
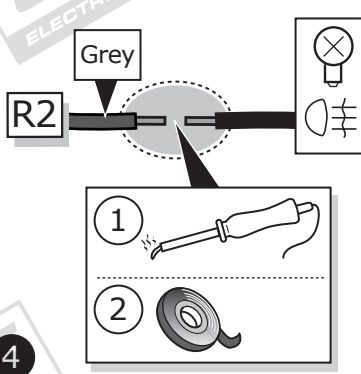
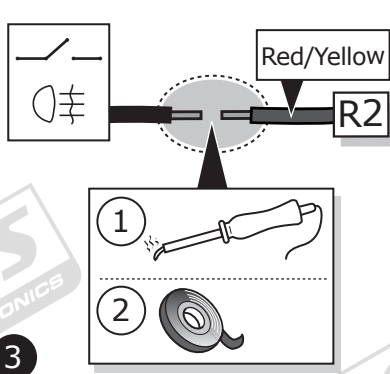
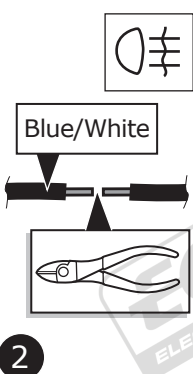
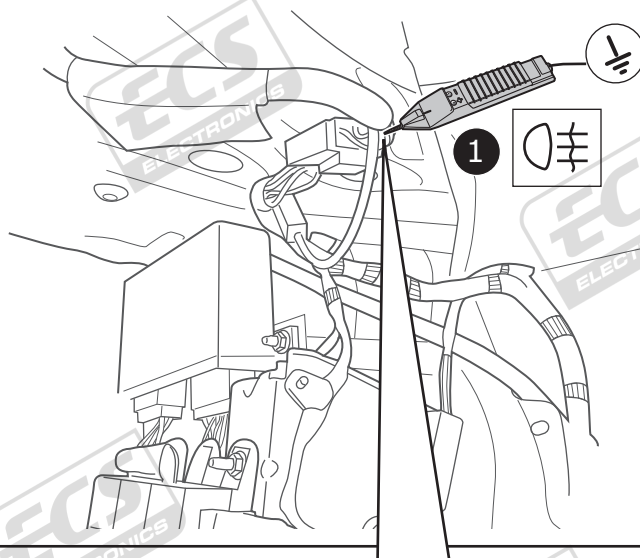
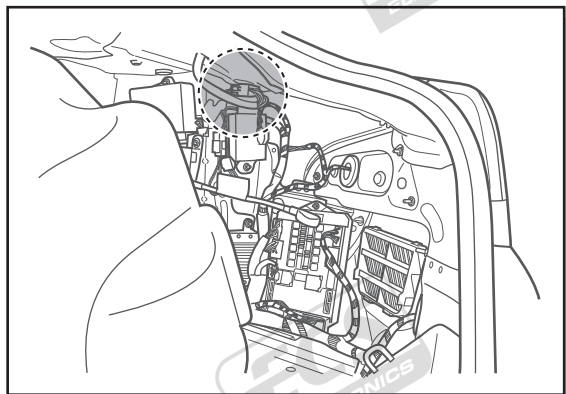
9



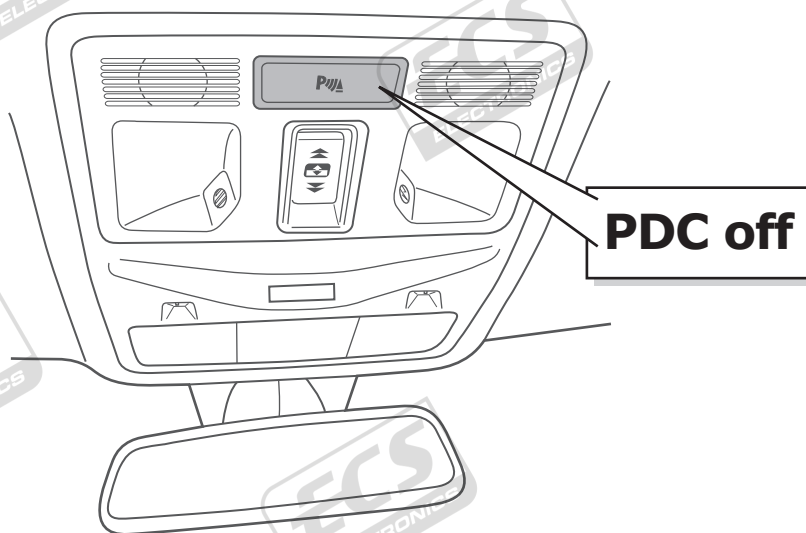
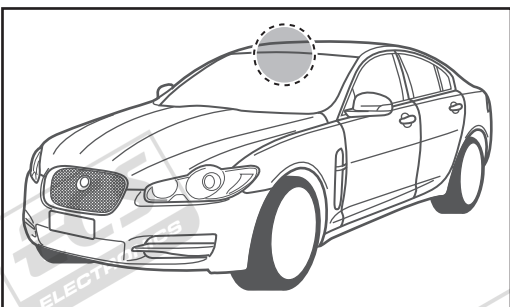
10



11

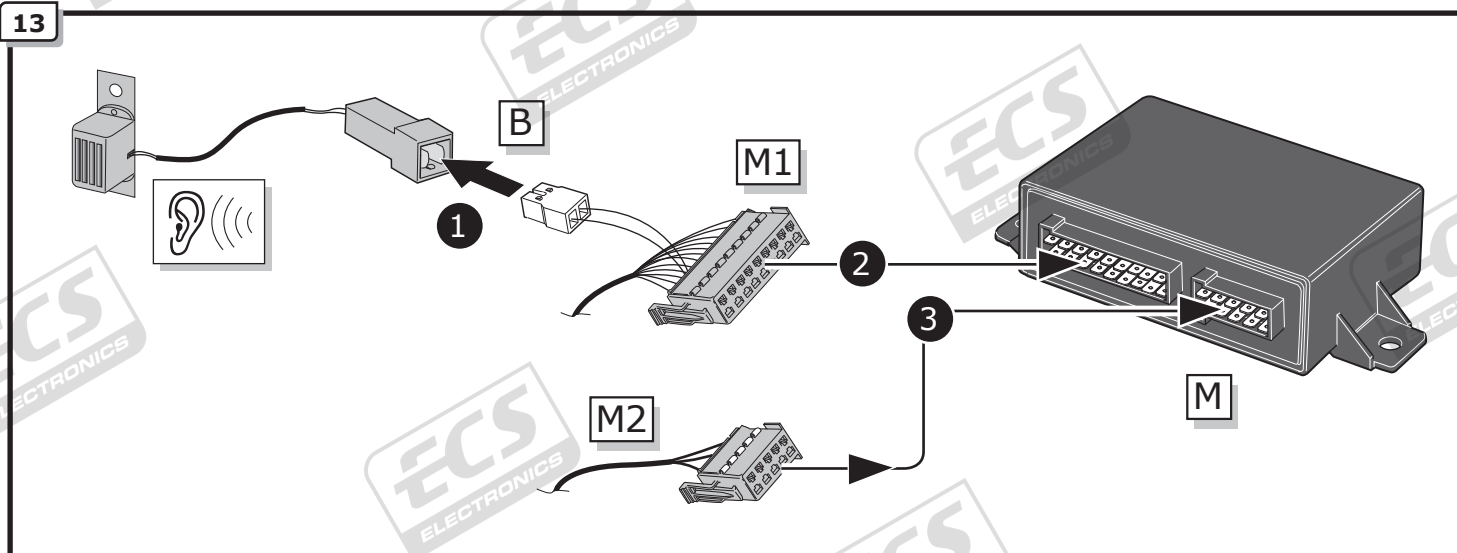


12

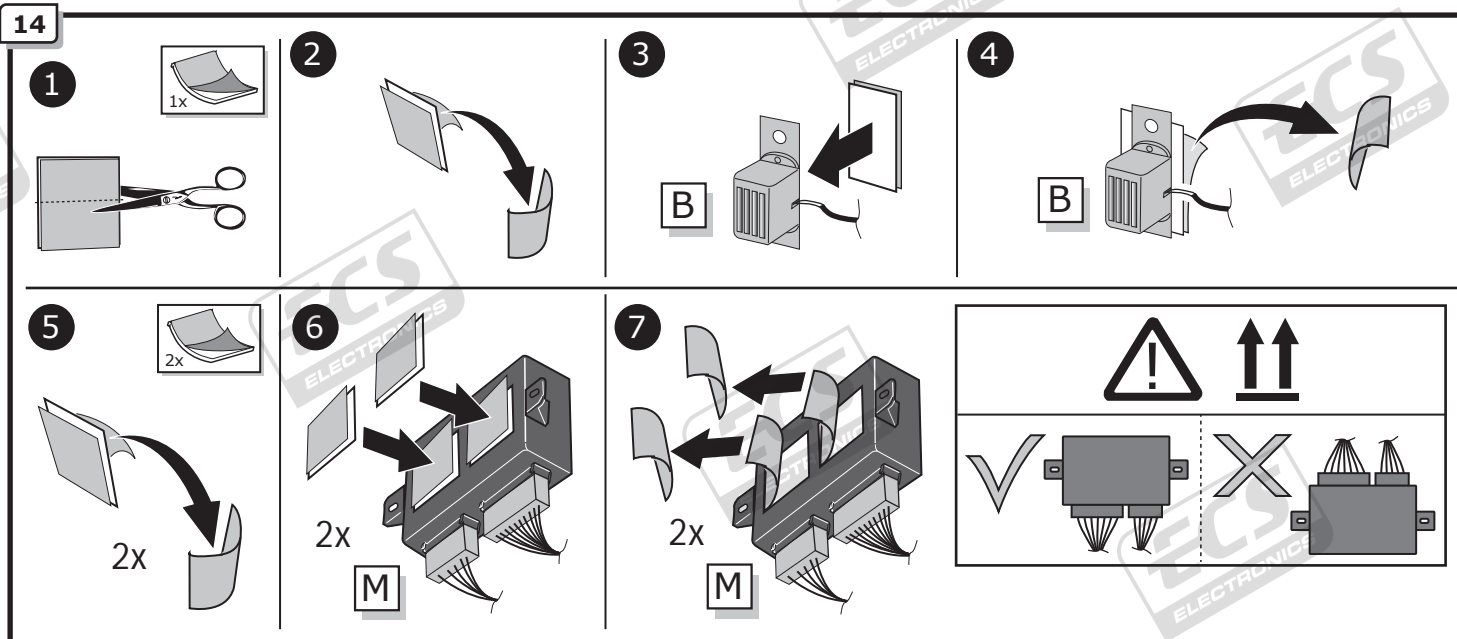




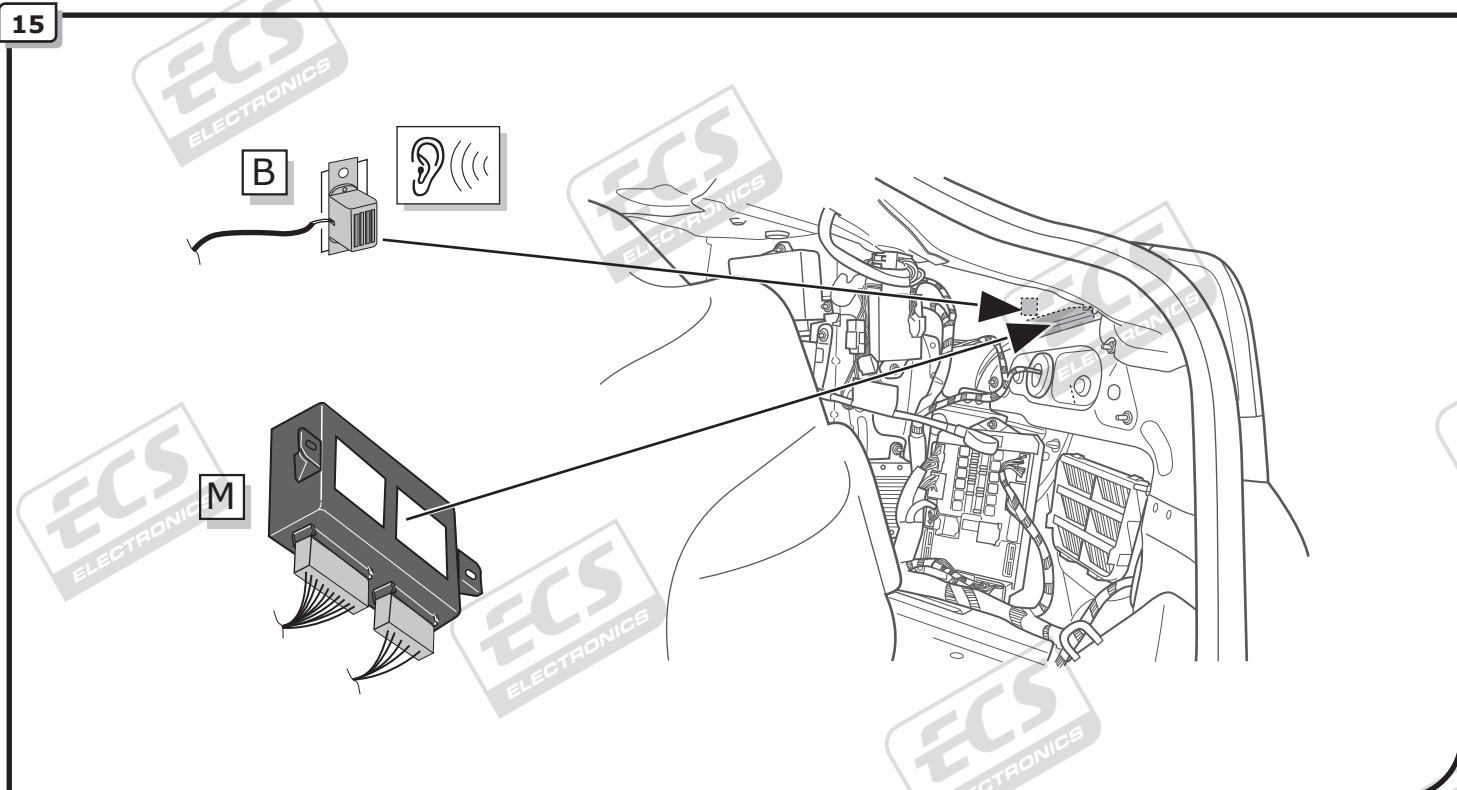
13



14

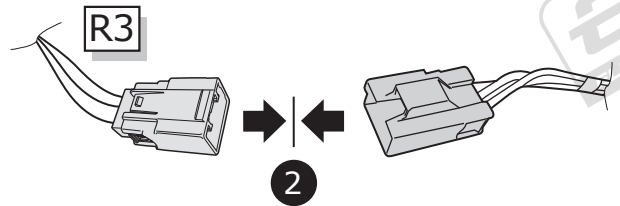
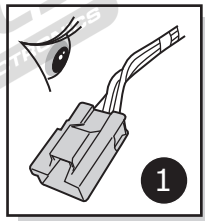


15

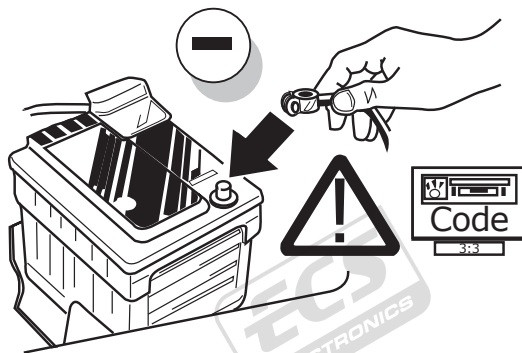




16



17

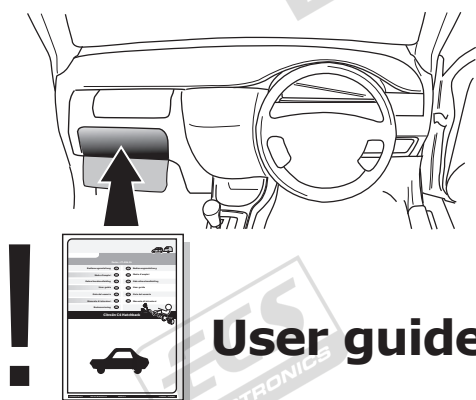


18

**!** TEST ALL THE CIRCUITS WITH A TEST DEVICE WITH THE CORRECT POWER LOAD FOR EACH FUNCTION. A TEST DEVICE WITH LED'S CANNOT BE USED FOR THIS PURPOSE.

INFO

REINSTALL TRIM.



## INFO

## SOCKET CONNECTION

| DIN/ISO 11446 | ←      | ⚡    | ⚡ 1-8 | →     | ☀      | STOP                        | ☀      | Reverse       | 30+             | 15+                         | ⚡ 10  | —  | ⚡ 9   |
|---------------|--------|------|-------|-------|--------|-----------------------------|--------|---------------|-----------------|-----------------------------|-------|----|-------|
|               | 1/L    | 2    | 3/31  | 4/R   | 5/58-R | 6/54                        | 7/58-L | 8             | 9               | 10                          | 11    | 12 | 13    |
| Pmax          | 21W    | 21W  |       | 21W   | 42W    | 3x21W                       | 42W    | 21W           | 180W/15Amp      | 180W/15Amp                  |       |    |       |
| Colour        | Yellow | Blue | White | Green | Brown  | Red<br>1,00 mm <sup>2</sup> | Black  | Black/<br>Red | Brown/<br>White | Red<br>2,50 mm <sup>2</sup> | White | -  | White |