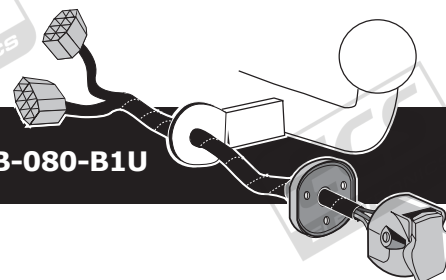


Mercedes Benz C Class Cabriolet A205	07/2016 >> 06/2018
Mercedes Benz C Class Sedan W205	03/2014 >> 06/2018
Mercedes Benz C Class Estate S205	09/2014 >> 06/2018
Mercedes Benz C Class Coupe C205	11/2015 >> 06/2018

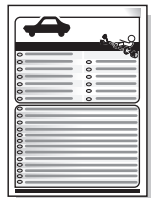
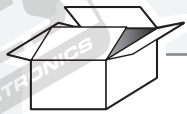
Partnr.: MB-080-B1U



- Fitting instructions electric wiring kit tow bar with 12-N socket up to DIN/ISO Norm 1724.
- We would expressly point out that assembly not carried out properly by a competent installer will result in cancellation of any right to damage compensation, in particular those arising by virtue of the product liability act.
- Contents of these kits and their fitting manuals are subject to alteration without notice, please ensure that these instructions are read and fully understood before commencing installation.
- Do not overload circuits; the maximum loads per connection are detailed in this manual.
- Attention! Before Installation, please read this manual carefully and inform your customer to consult the vehicle owners manual to check for any vehicle modifications required before towing.
- In the event of functional problems, troubleshooting must be limited to about 0.5 hours, contact the technical support:  
[t.skinner@ecs-electronics.com](mailto:t.skinner@ecs-electronics.com) / 07440 202 052.



# Part list



R2

R1

G

X

M

1x

M

X

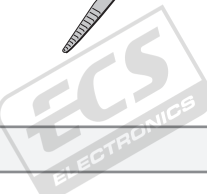
3x

Optional UN-243-YZ

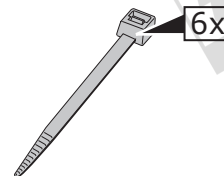
Reverse lamp pre-wire extension



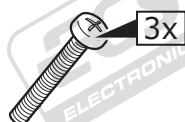
Pag. 9



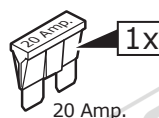
3x



6x



3x

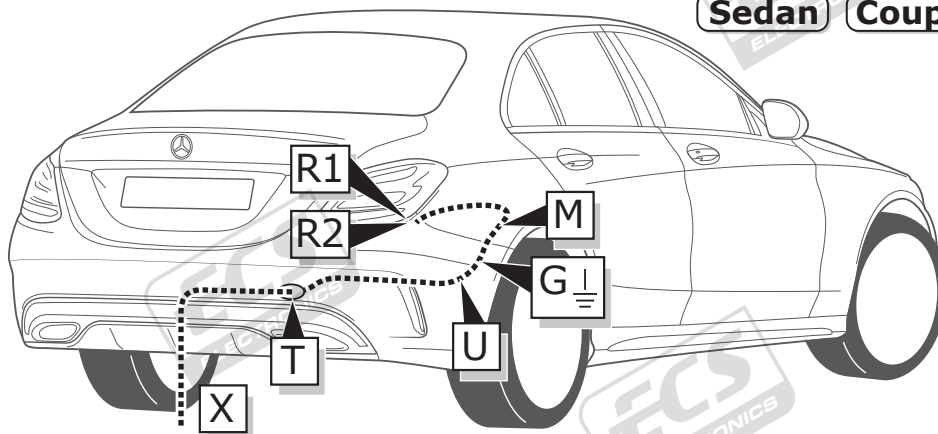


1x

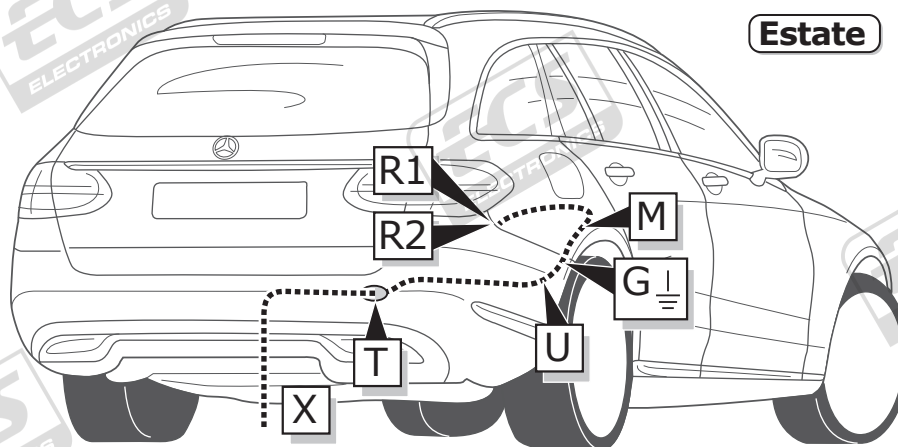
20 Amp.

## ROUTING

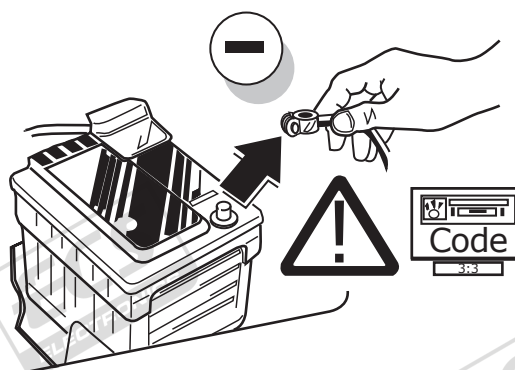
**Sedan** **Coupe** **Cabriolet**



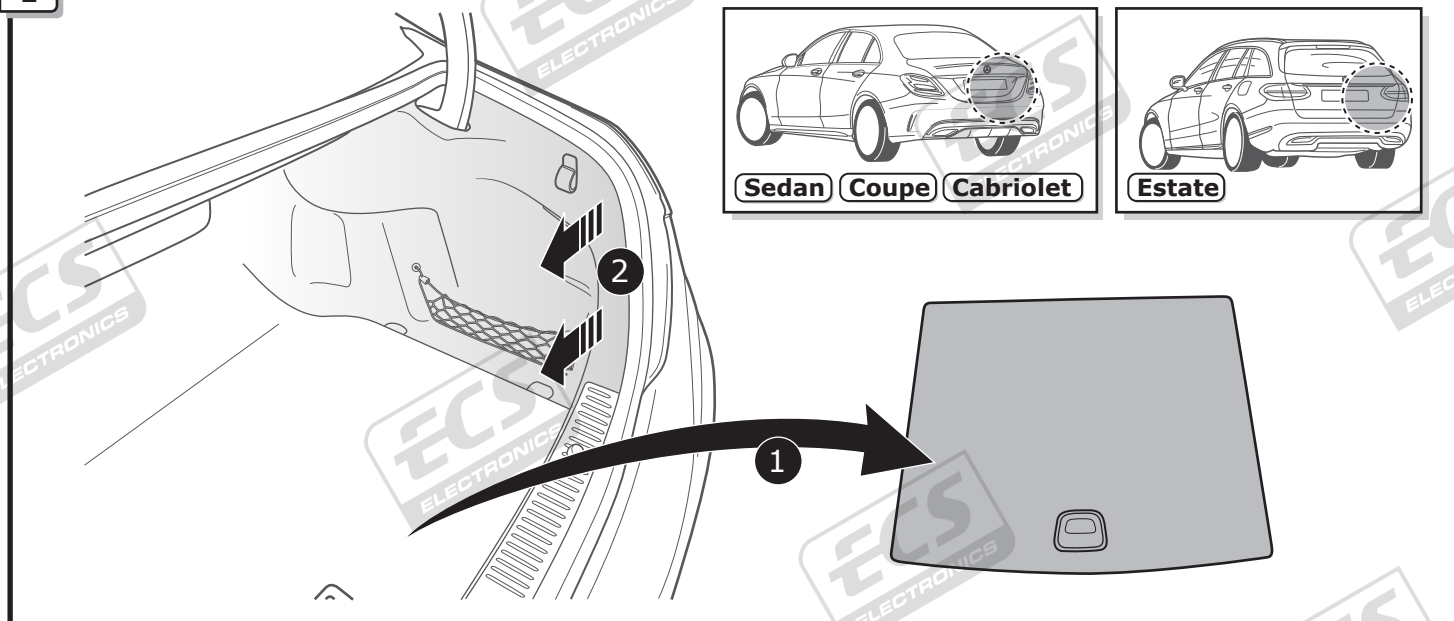
**Estate**



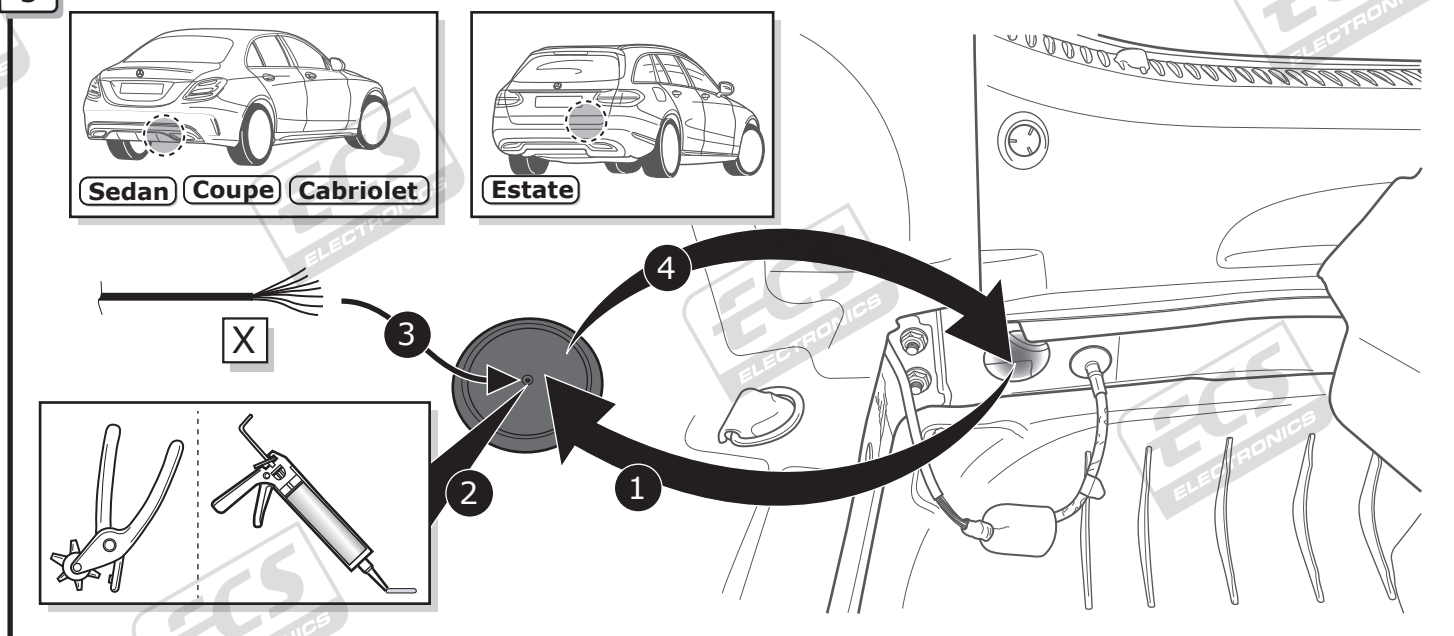
**1**



2

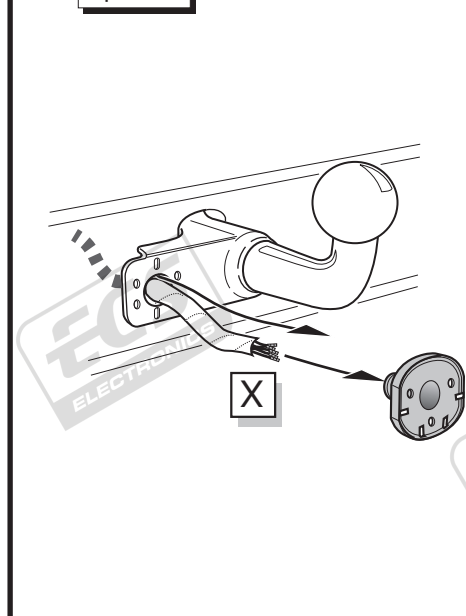


3

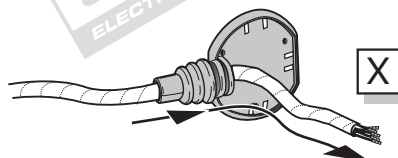


A

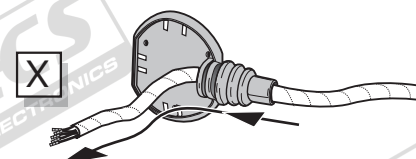
Option 1



Option 2



Option 3

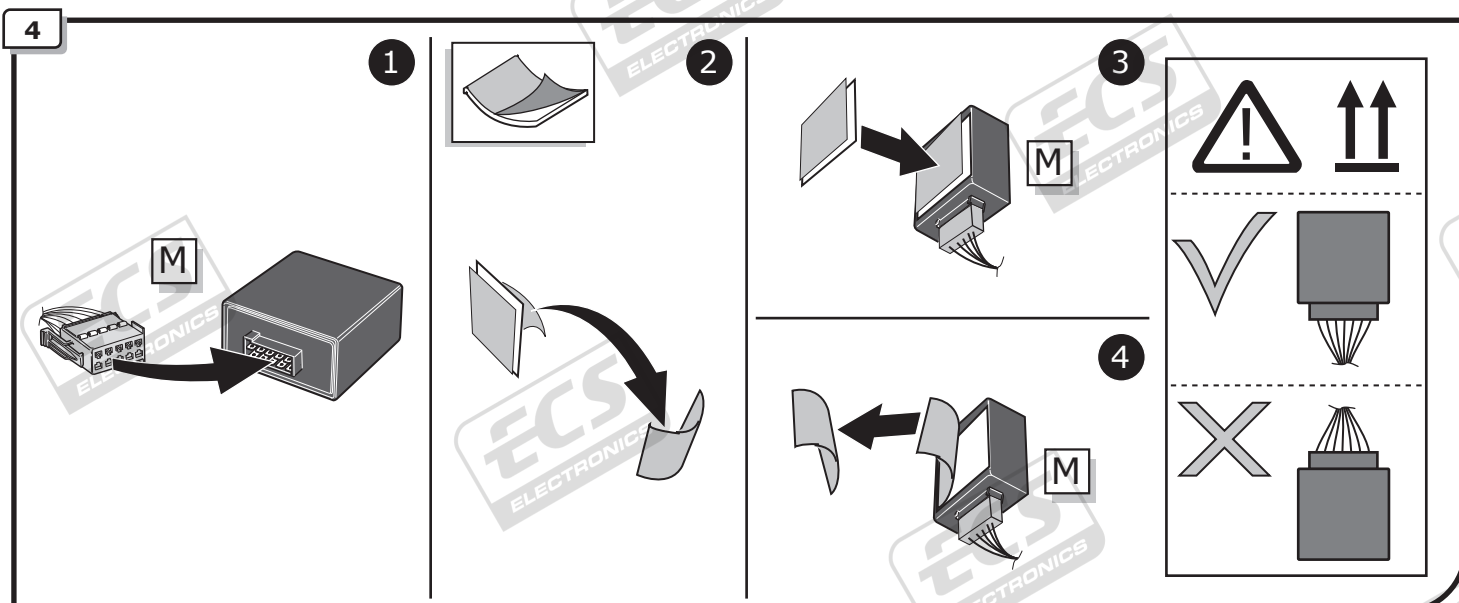
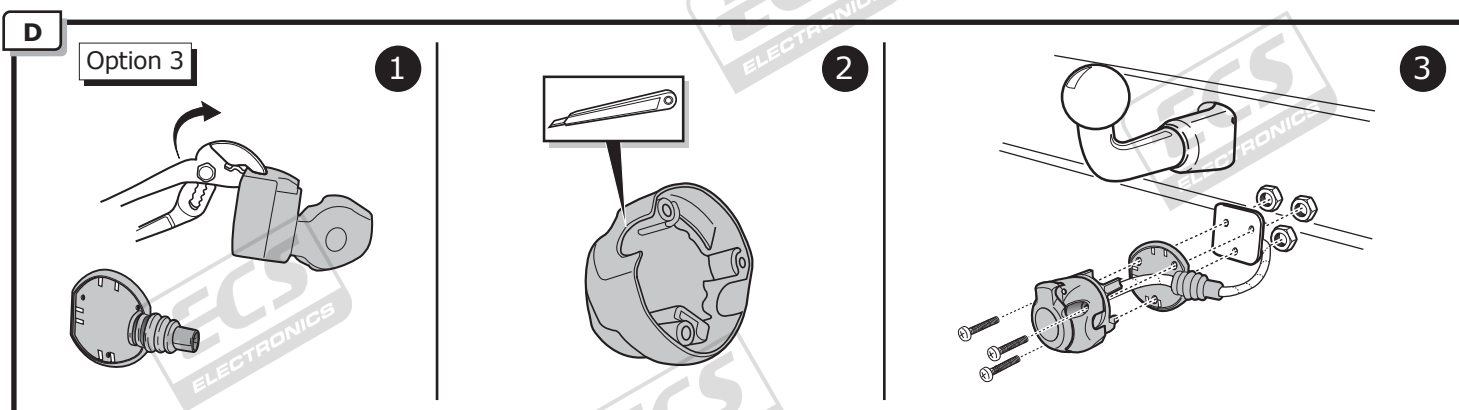
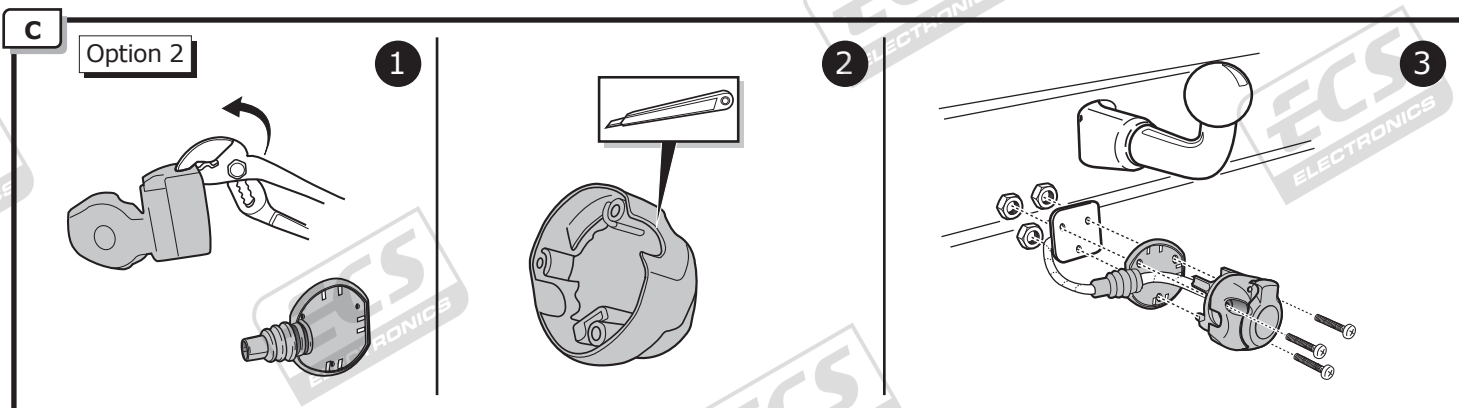
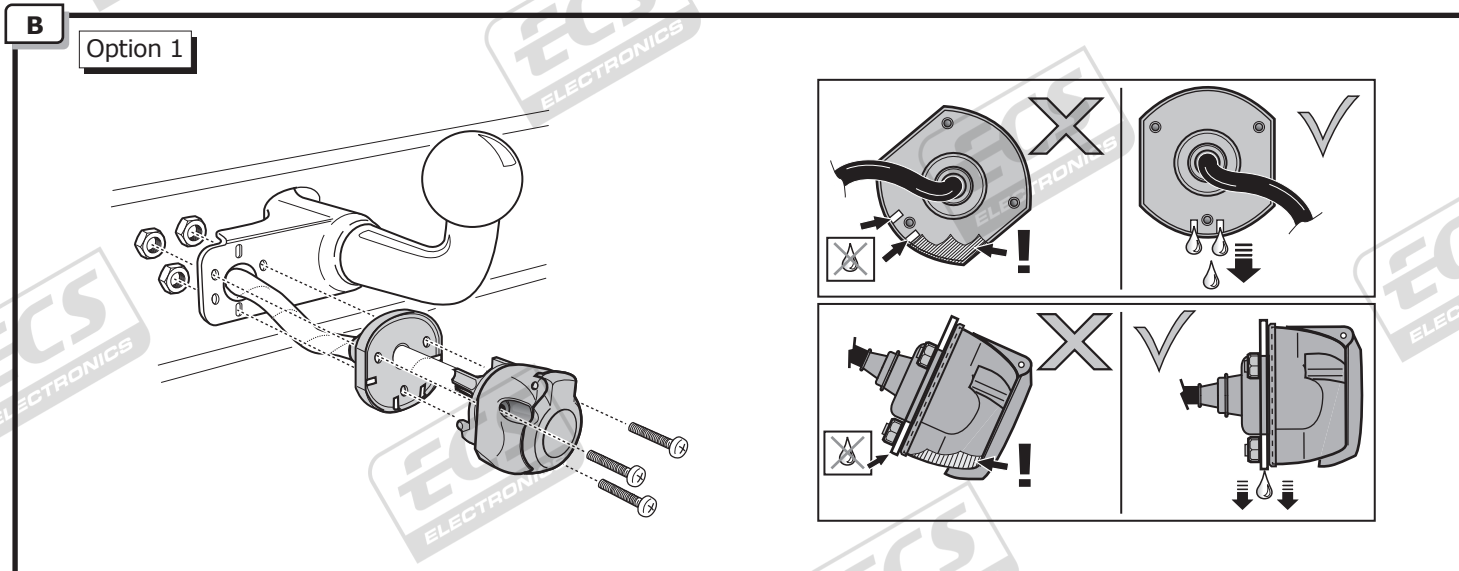


INFO

SOCKET CONNECTION



Pag. 8





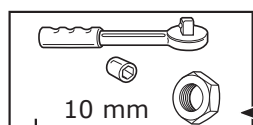
5



Sedan Coupe Cabriolet



Estate



2

3

1

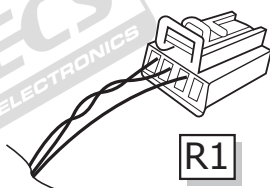
6



Sedan Coupe Cabriolet



Estate



"AAG"



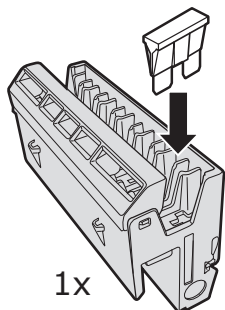
7



Sedan Coupe Cabriolet



Estate



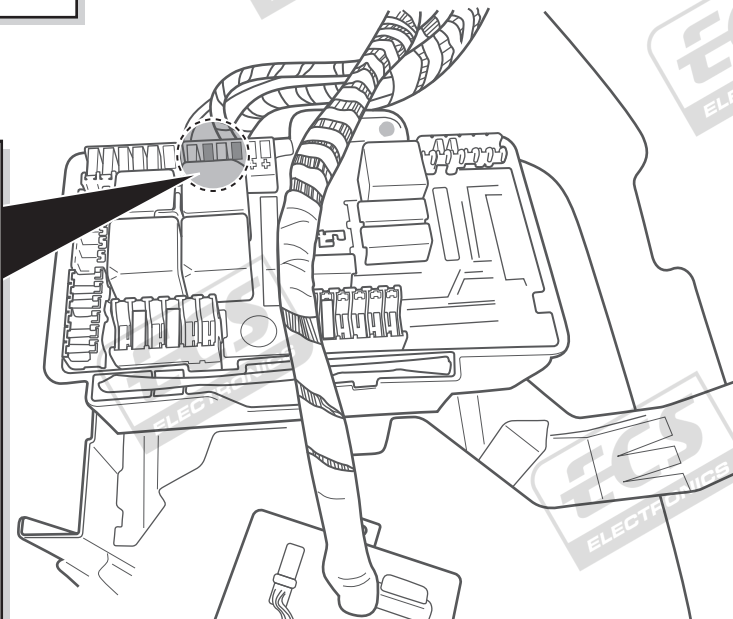
1x

R2

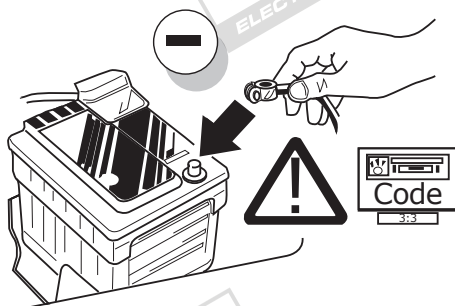
Orange  
20 Amp. / pos. 407



+30

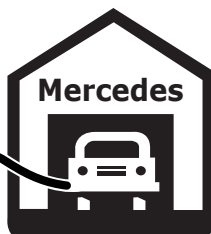


8



## INFO

## Coding



**The activation of the trailer functions has to be carried as follows:**

1. Connect computer to car
2. Start program
3. Click "Special functions"
4. Click "Input for retrofits or conversions"
5. Enter you user name and password
6. Write 550 in the upper (+) field
7. Accept and close the program.
8. Start the program again
9. Click "Controllers View"

10. code installed control units as follows:

- a. Click e.g. "EZS" (Ignition)
- b. Click "Adjust"
- c. On the left side:  
click updating SCN encoding
- d. Go online a wait a few seconds

11. Perform the operation with all the control units listed below:

- "EZS" (Ignition)
- "SAM-rear" (Signal detection- and control modul rear).
- "SAM-front" (Signal detection- and control modul front).
- "combined instrument"
- "headunit/Audio 20"

if fitted:

- "Parksystem"
- "360° camera"
- "Level Control"

► Coding finished

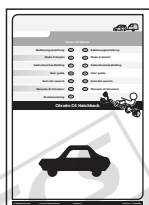
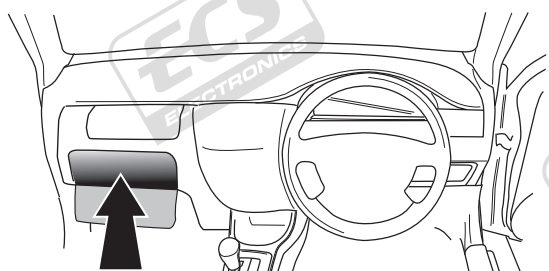
9

TEST ALL THE CIRCUITS WITH A TEST DEVICE WITH THE CORRECT POWER LOAD FOR EACH FUNCTION. A TEST DEVICE WITH LED'S CANNOT BE USED FOR THIS PURPOSE.

10

REINSTALL TRIM.

11



**User guide**



## INFO

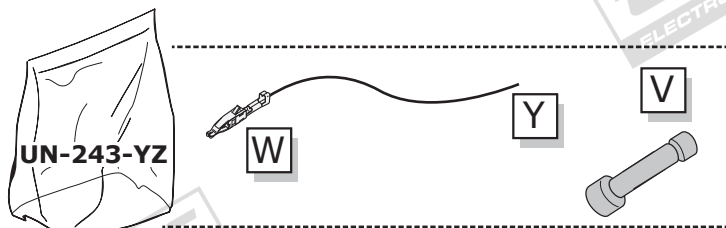
### SOCKET CONNECTION

DIN/ISO 1724							
	1/L	2	3/31	4/R	5/58-R	6/54	7/58-L
Pmax	21W	21W		21W	42W	3x21W	42W
Colour	Yellow	Blue	White	Green	Brown	Red	Black

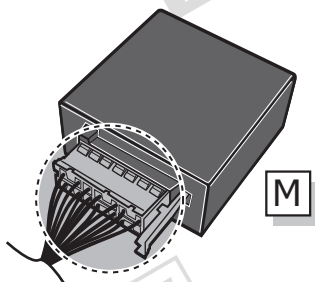


# UN-243-YZ Reverse lamp pre-wire extension

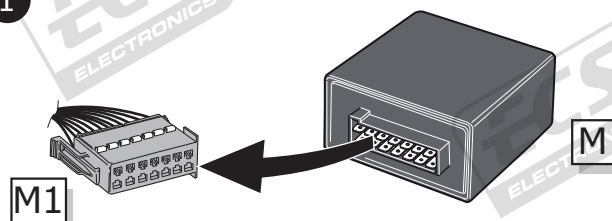
⚠ MAX = 21W



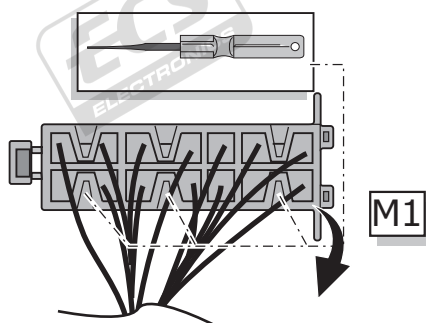
A



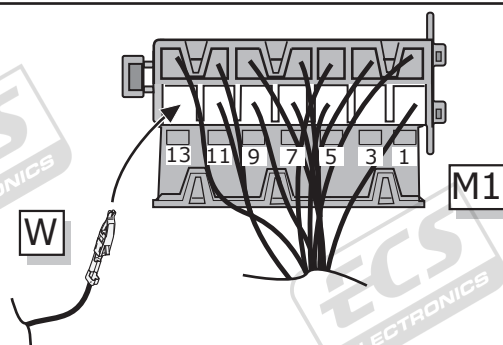
1



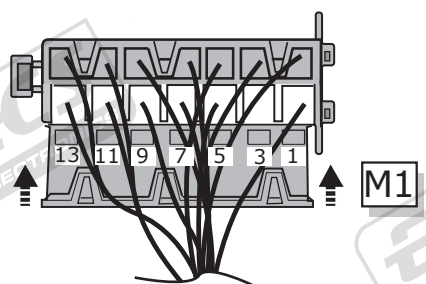
2



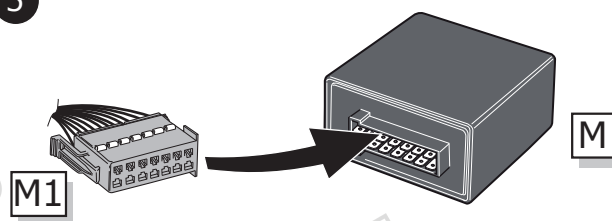
3



4



5



B

⚠ MAX = 21W

