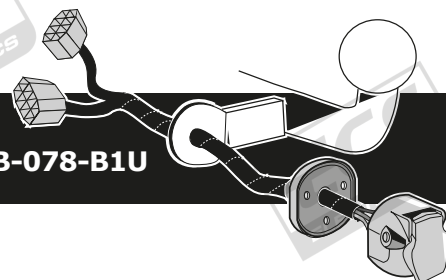


Mercedes M-Class W166 11/2011 >>
Mercedes GLE W166 09/2015 >> 02/2019
Mercedes GLE Coupe C292 07/2015 >> 03/2020

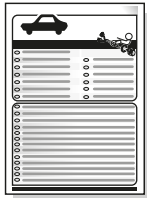
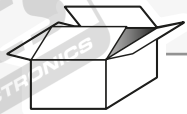
Partnr.: MB-078-B1U



- Fitting instructions electric wiring kit tow bar with 12-N socket up to DIN/ISO Norm 1724.
- We would expressly point out that assembly not carried out properly by a competent installer will result in cancellation of any right to damage compensation, in particular those arising by virtue of the product liability act.
- Contents of these kits and their fitting manuals are subject to alteration without notice, please ensure that these instructions are read and fully understood before commencing installation.
- Do not overload circuits; the maximum loads per connection are detailed in this manual.
- Attention! Before Installation, please read this manual carefully and inform your customer to consult the vehicle owners manual to check for any vehicle modifications required before towing.
- In the event of functional problems, troubleshooting must be limited to about 0.5 hours, contact the technical support:
t.skinner@ecs-electronics.com / 07440 202 052.



Part list



M



X



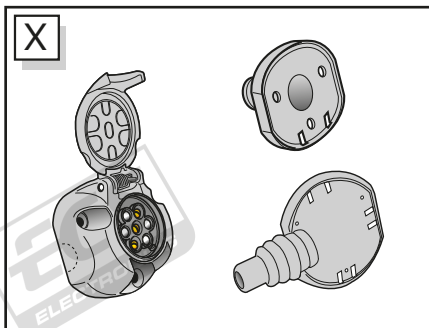
1x

G

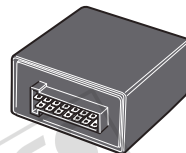
U1

C

3x



X



M

UN-243-YZ

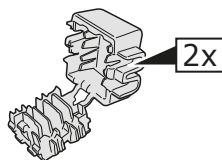
Optional reverse lamp
pre-wire extension included



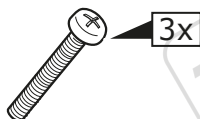
Pag. 14



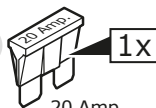
3x



2x

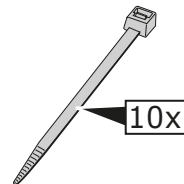


3x



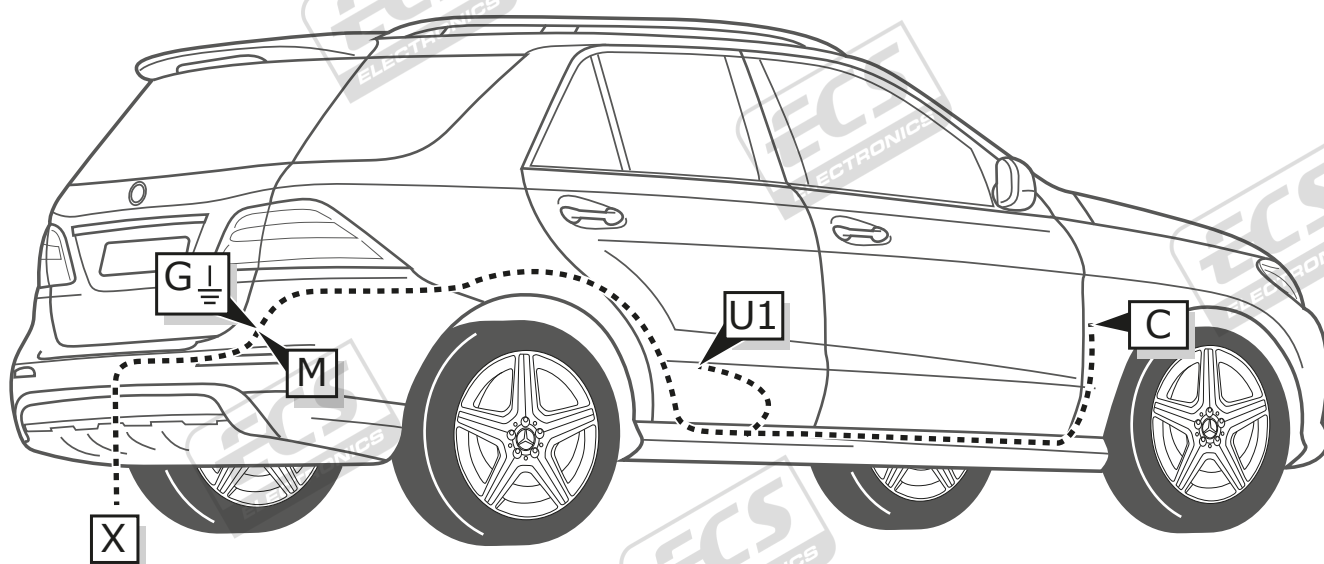
1x

20 Amp.

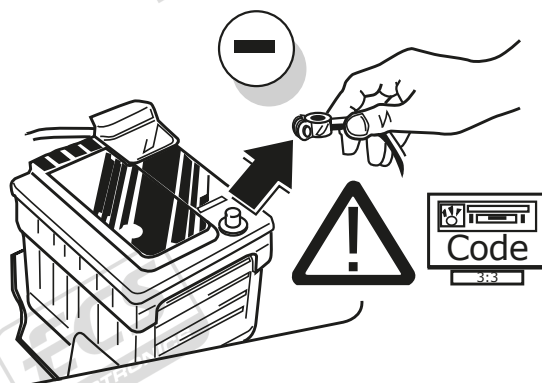


10x

ROUTING

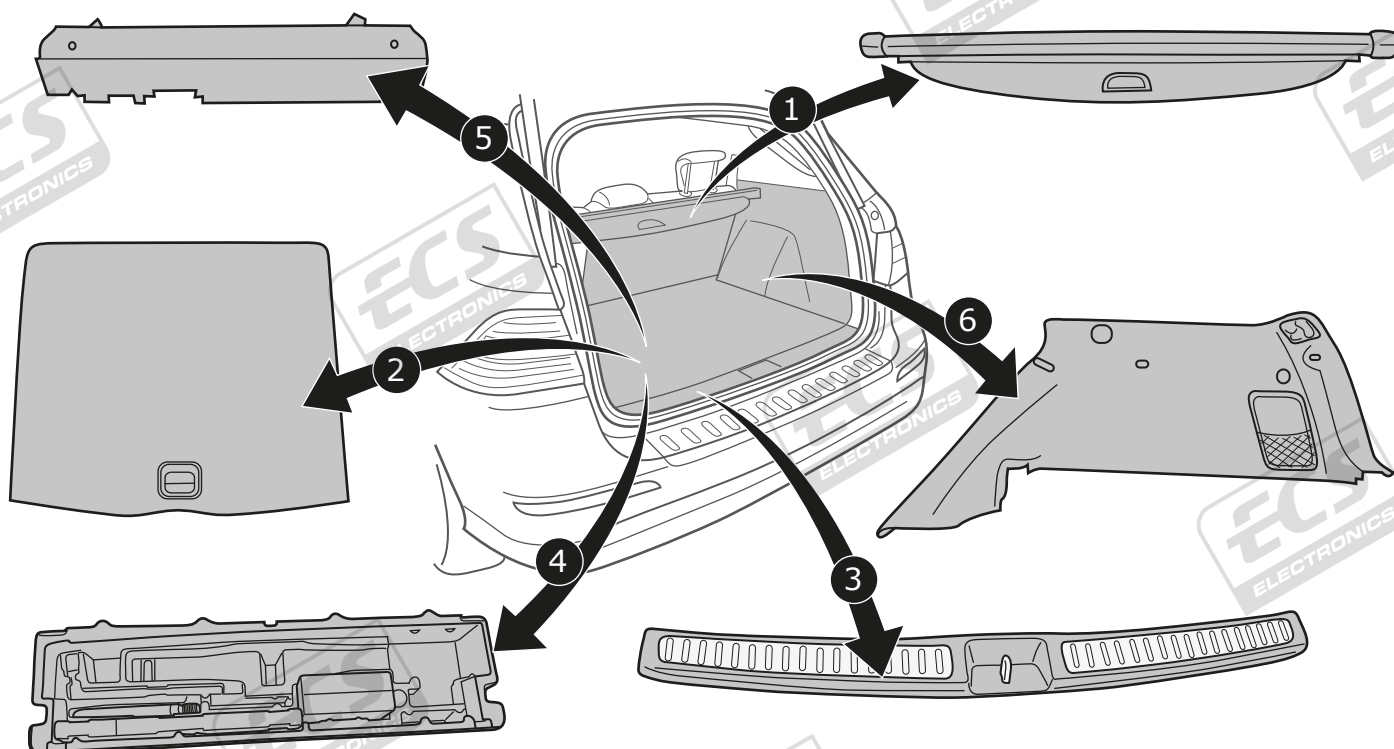


1



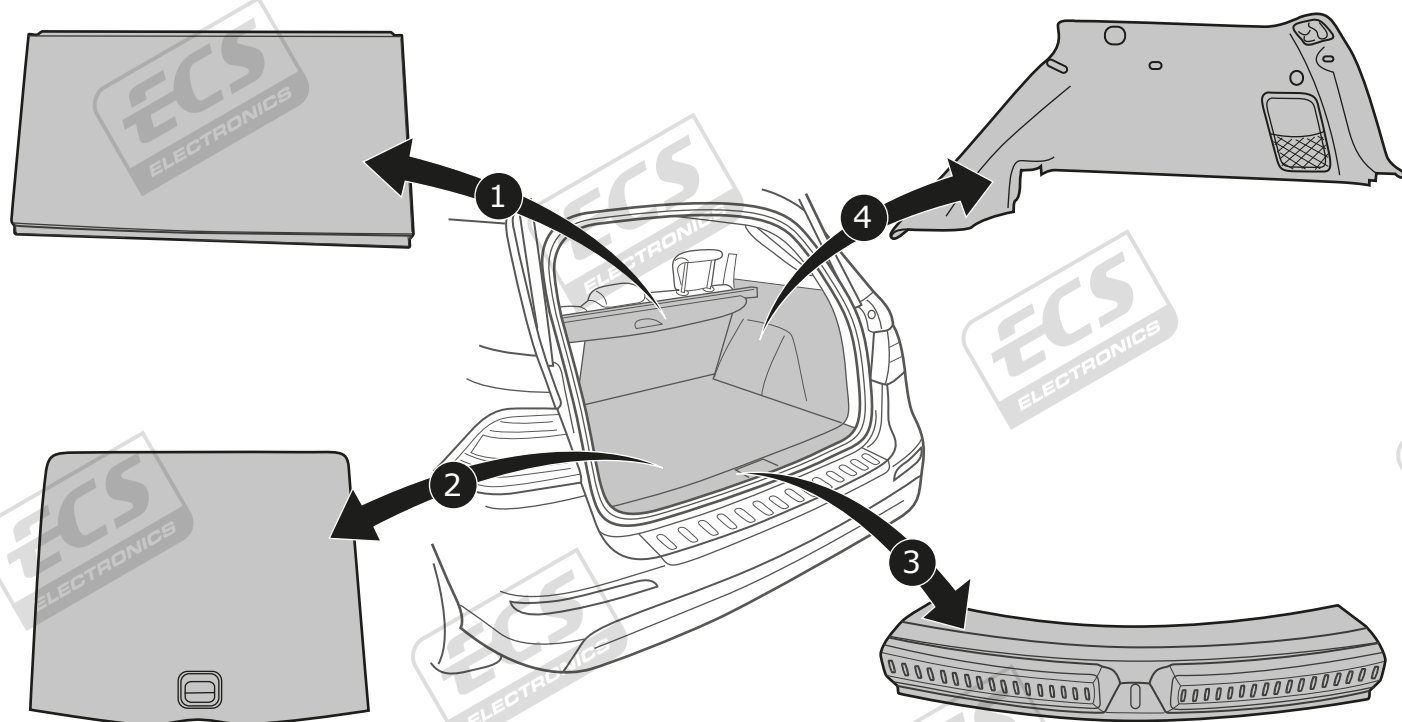
M-Class

2

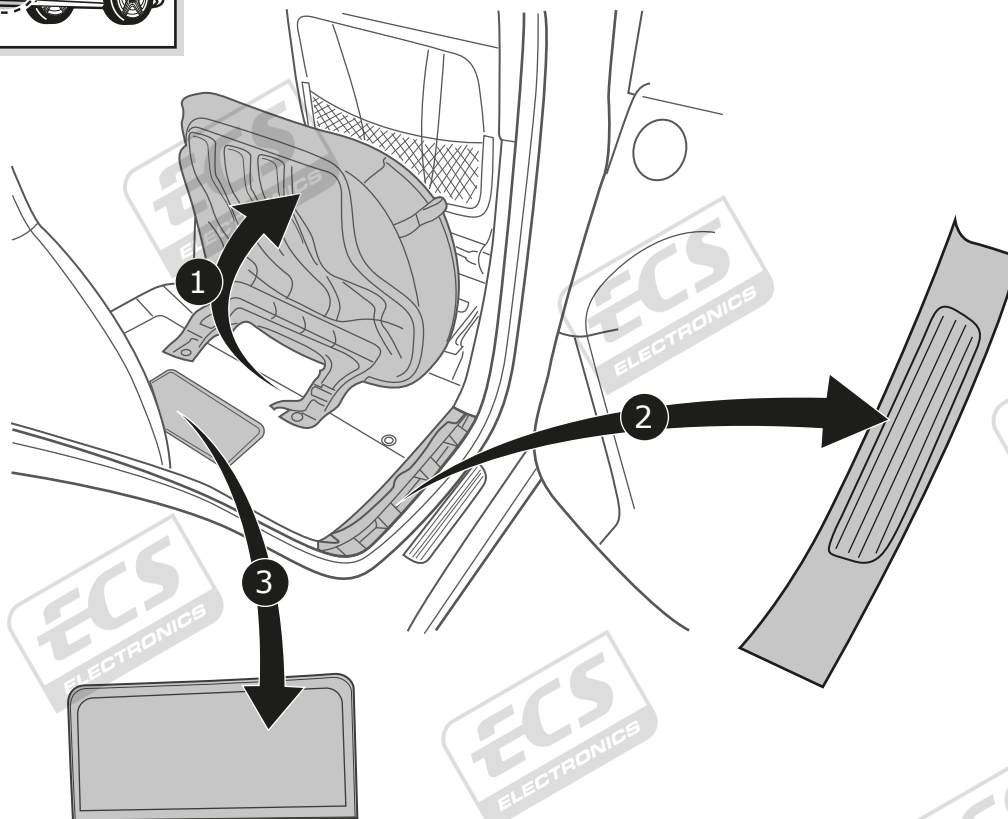
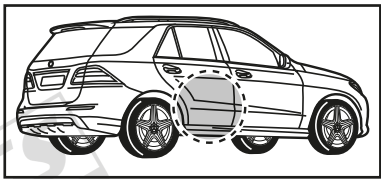


GLE-Class/ GLE Coupe

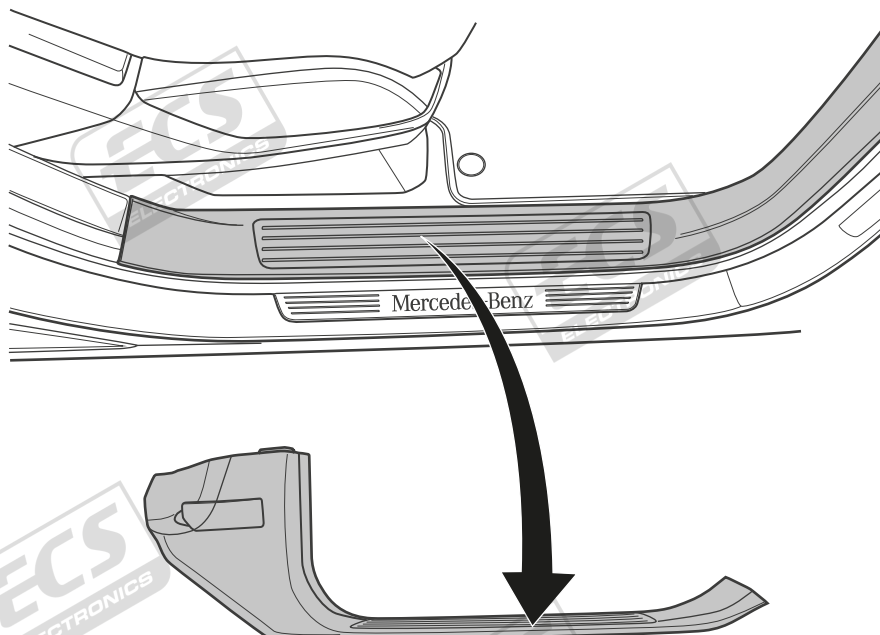
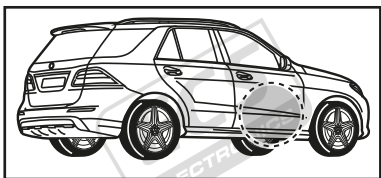
3



4

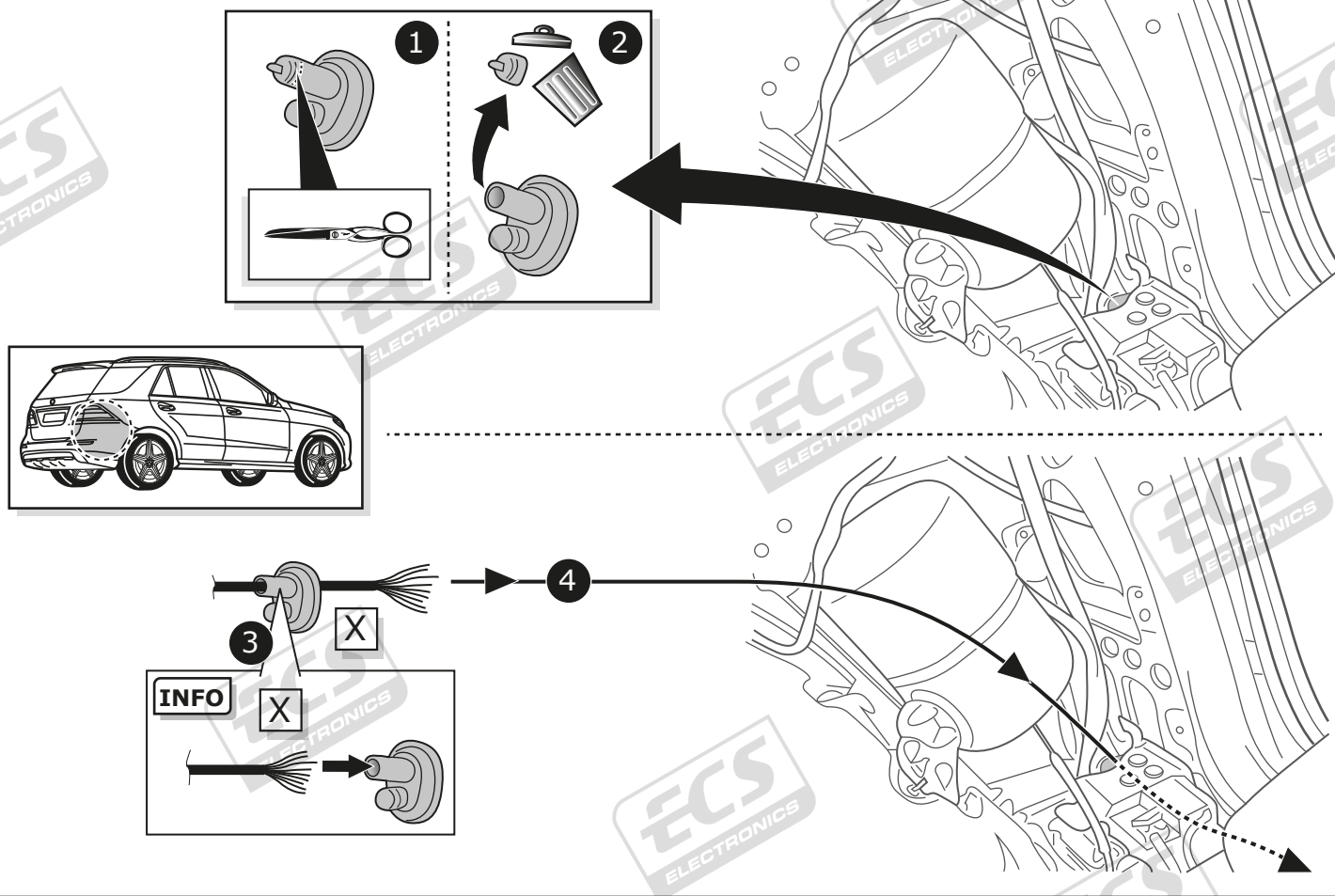


5



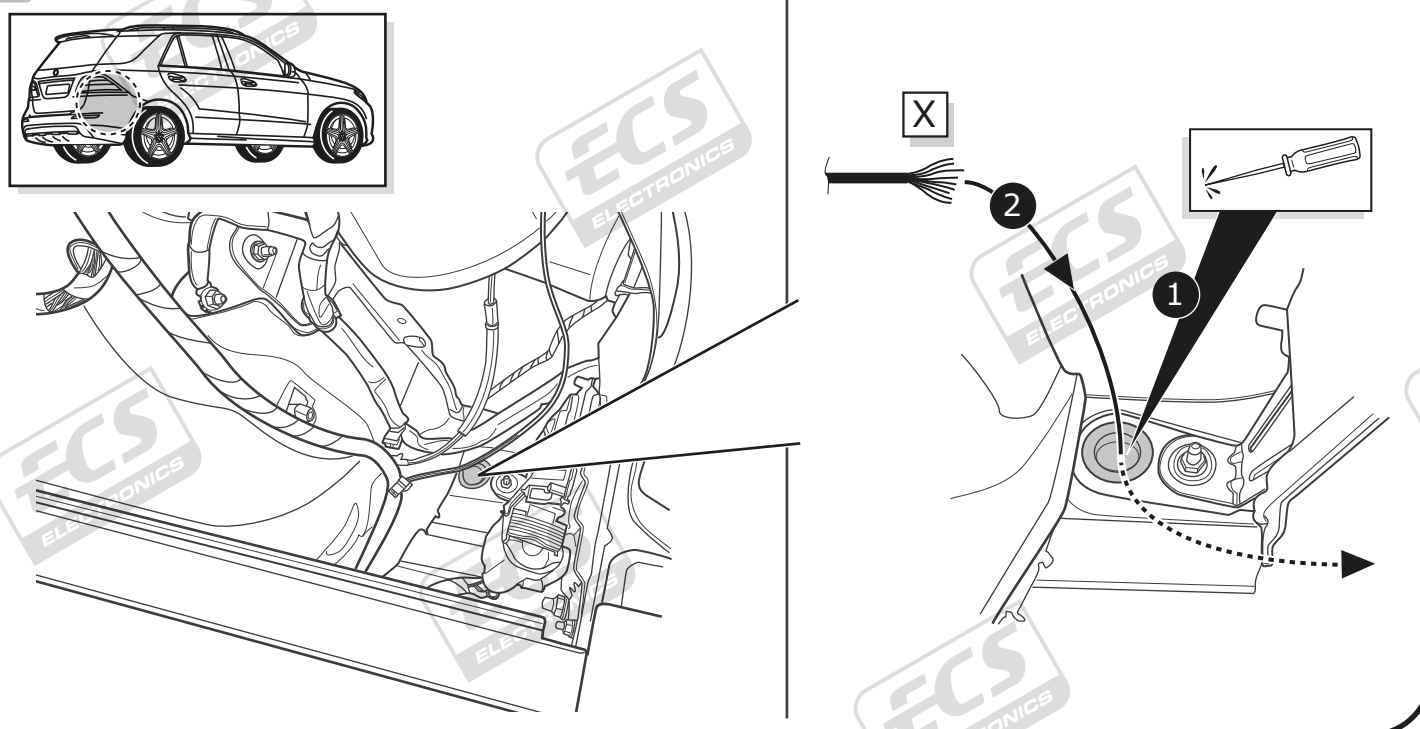
M-Class

6



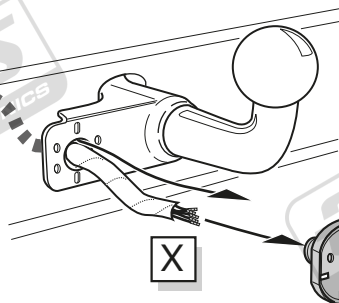
GLE-Class/ GLE Coupe

7

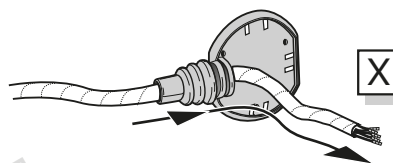


A

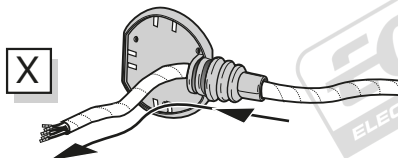
Option 1



Option 2



Option 3



INFO

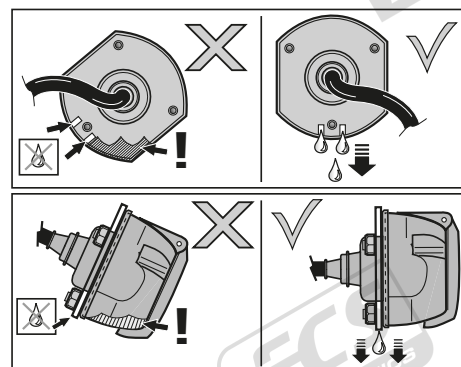
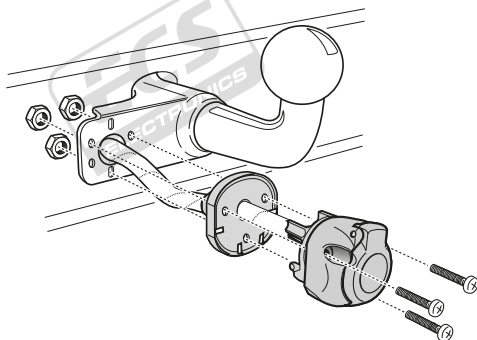
SOCKET CONNECTION



Pag. 13

B

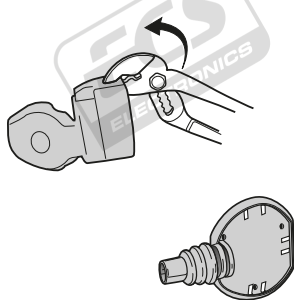
Option 1



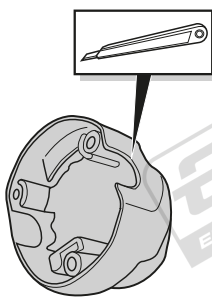
C

Option 2

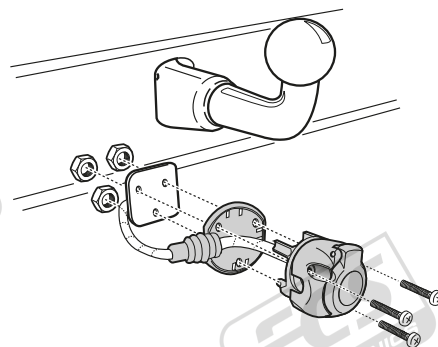
1



2



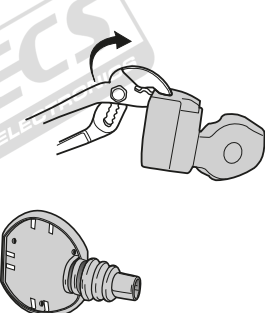
3



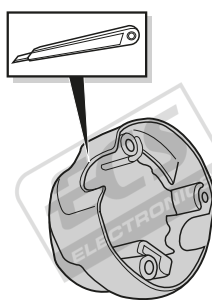
D

Option 3

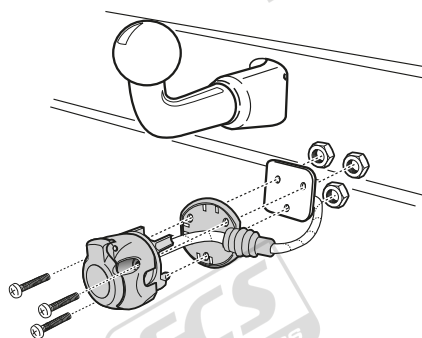
1



2

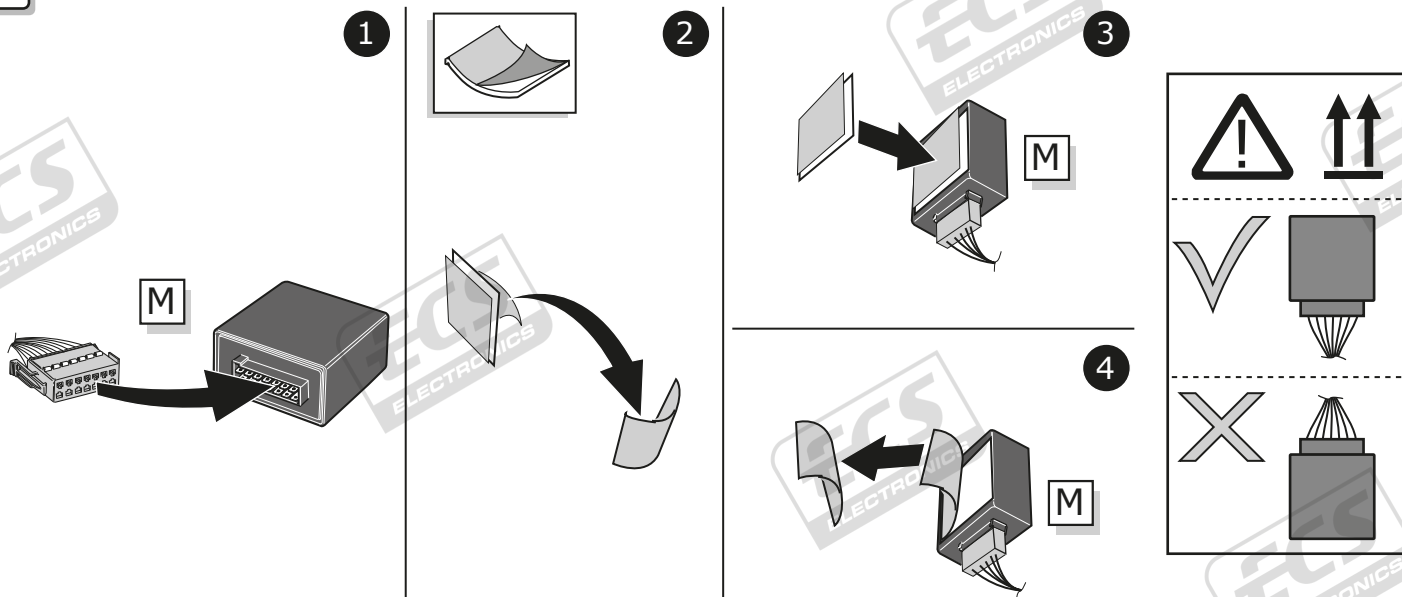


3



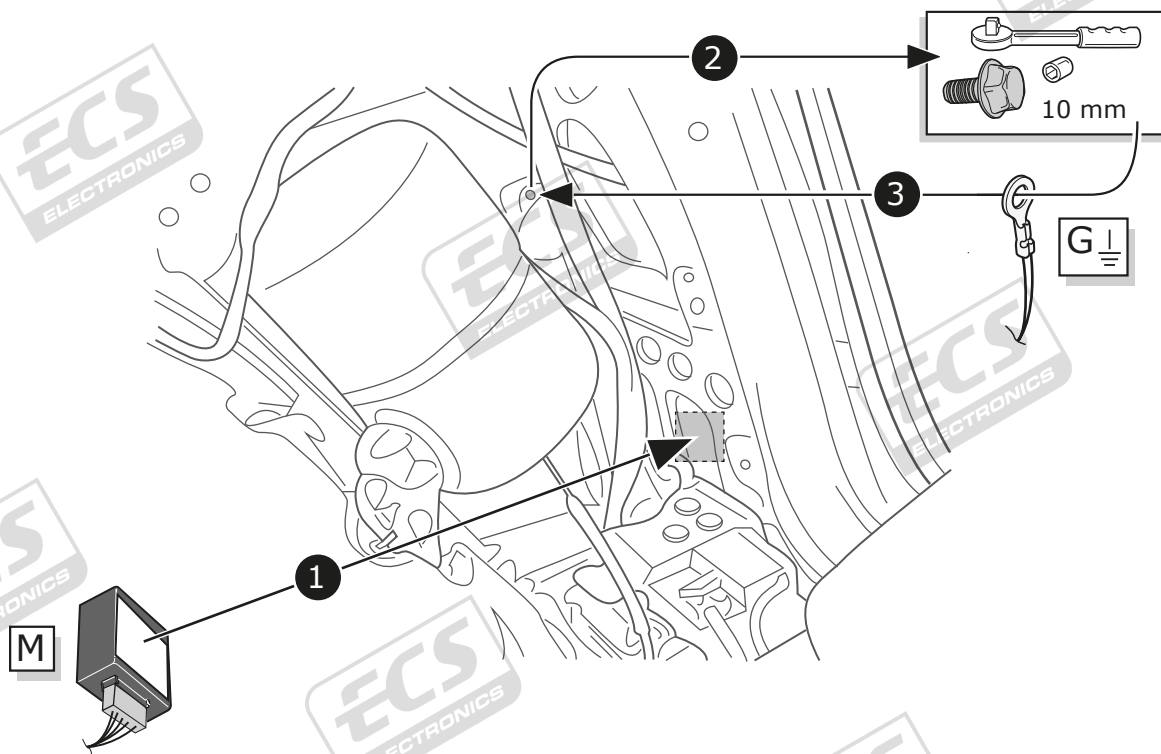
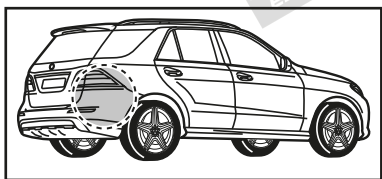
All Models

8

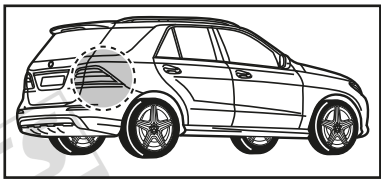


M-Class

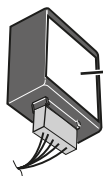
9



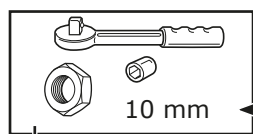
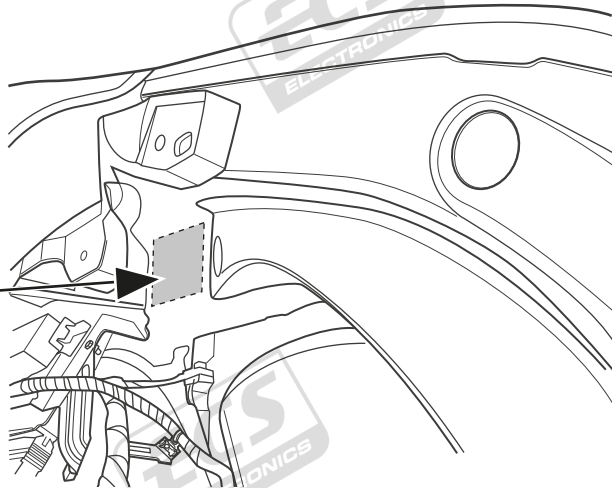
10



M



1

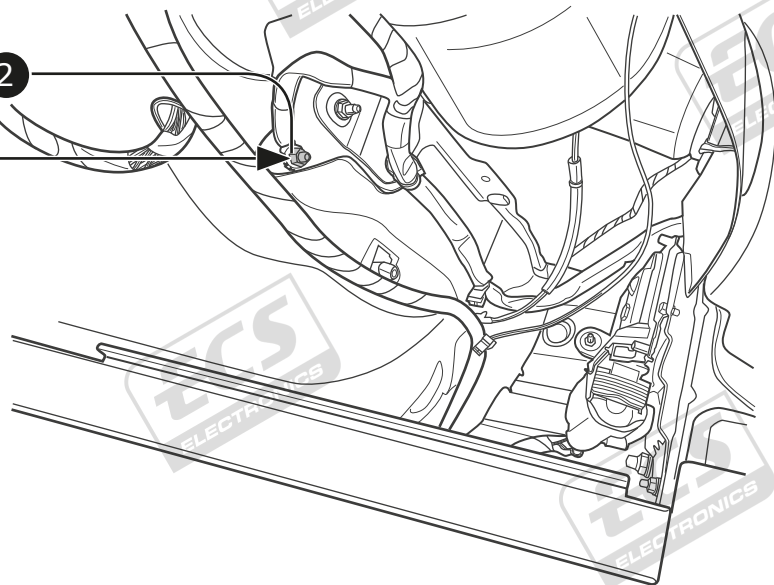


10 mm

2

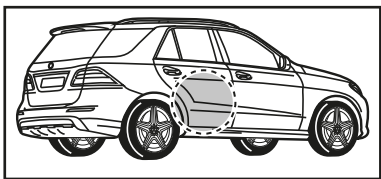
3

G



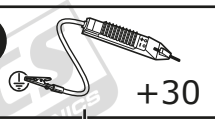
All Models

11

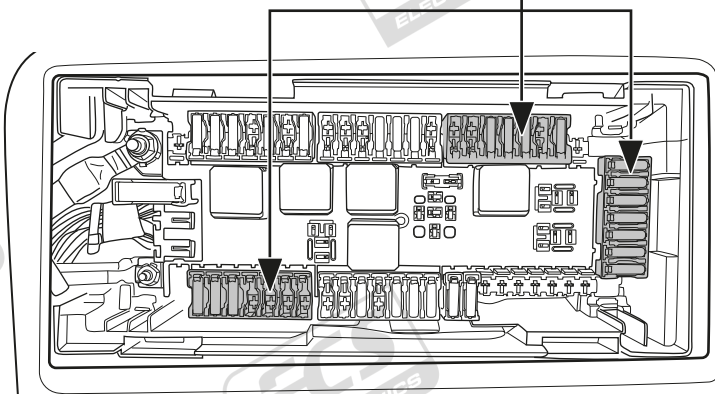


1 Choose free fuse position in connector.

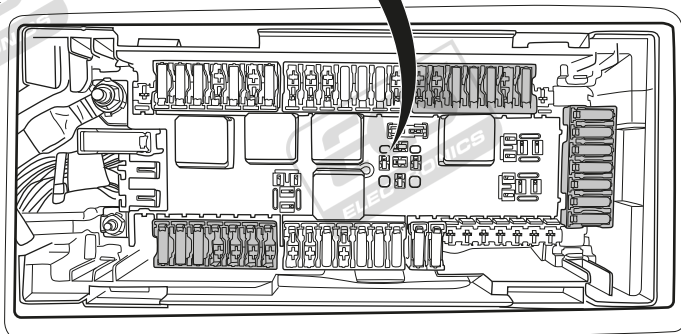
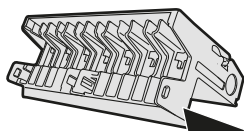
2



+30

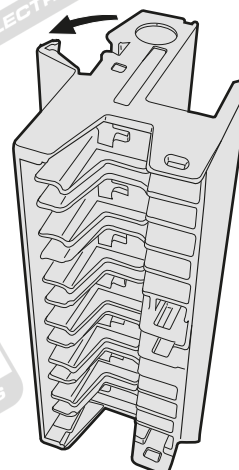


12

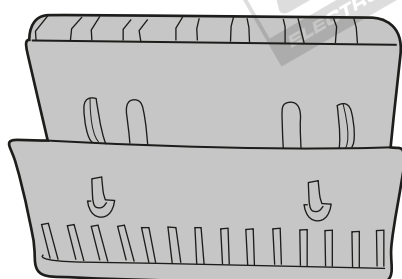


1

2



3 Choose free position +30

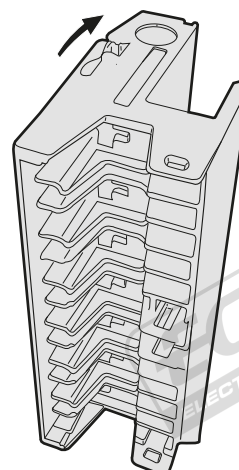


4

Orange

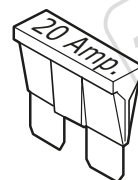
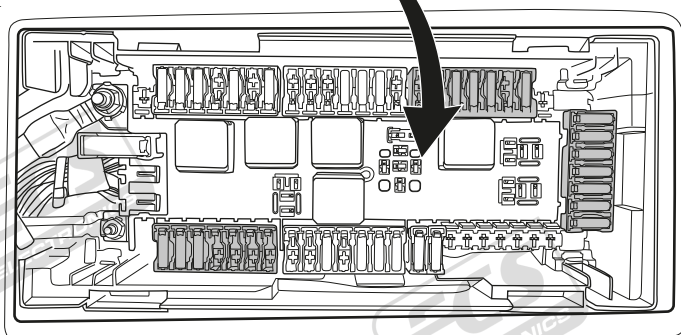
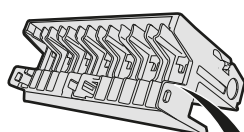
U1

5



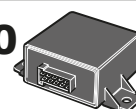
6

7



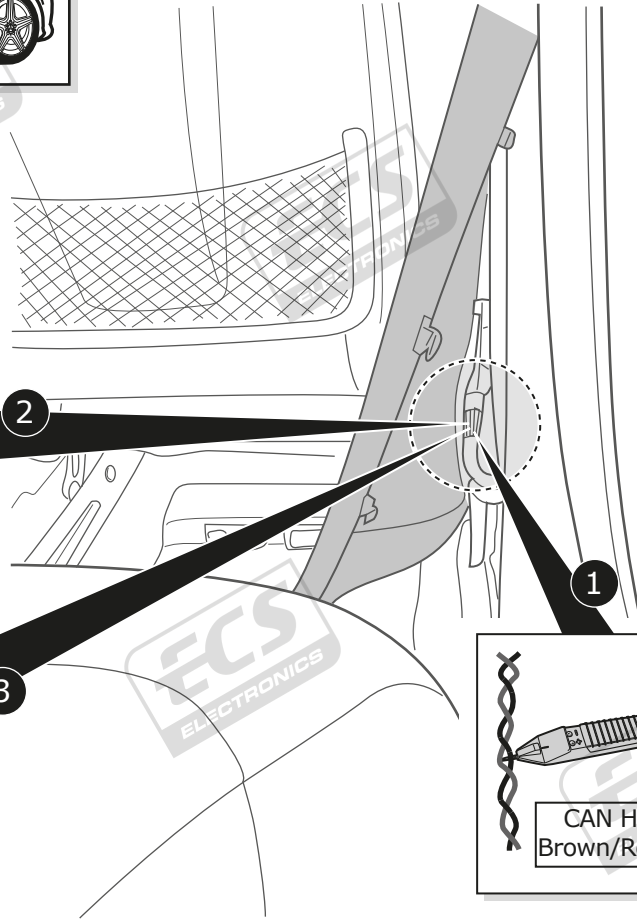
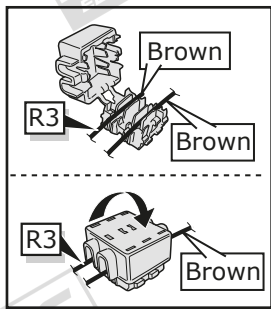
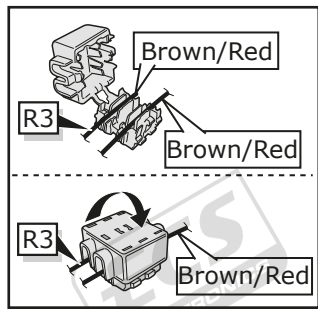
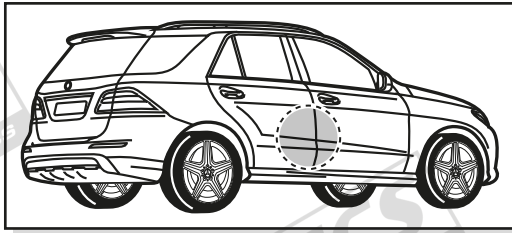
20 Amp.

+30

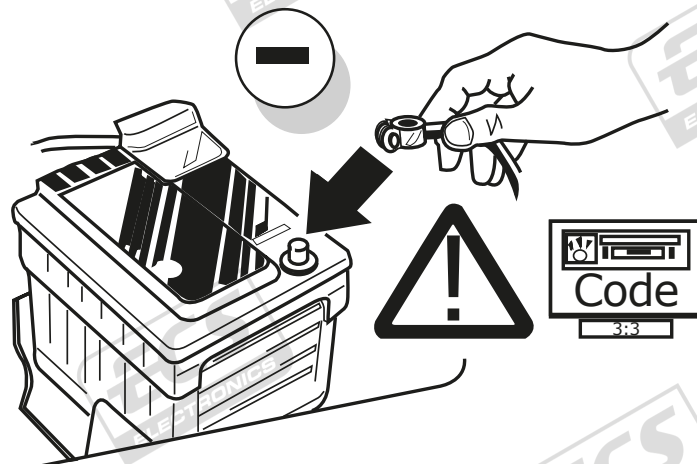


Orange

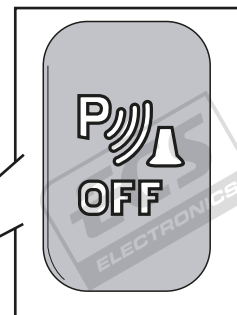
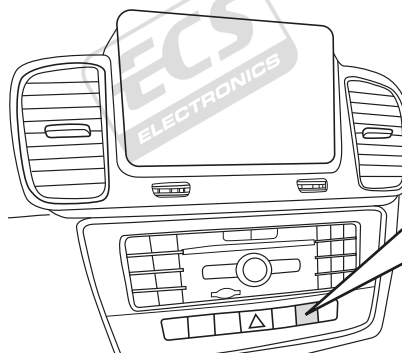
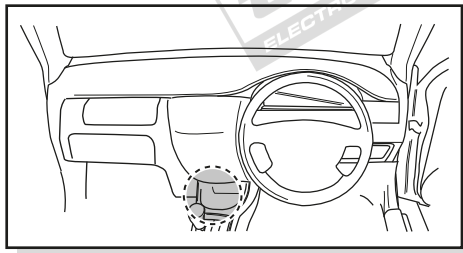
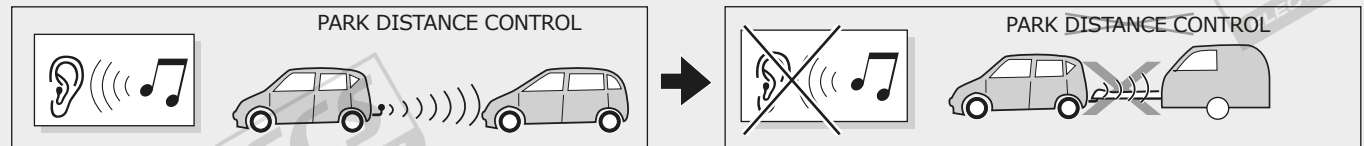
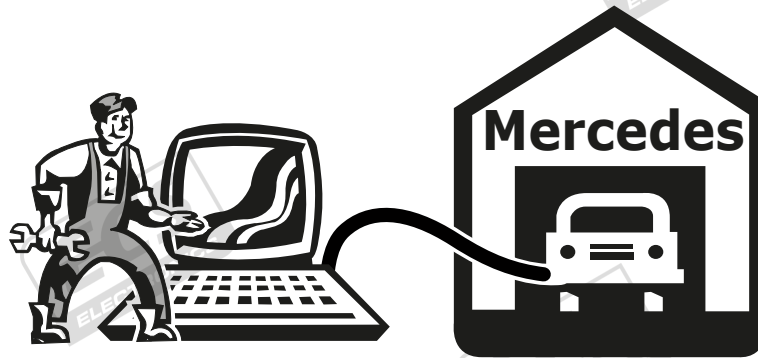
13



14



15



16



TEST ALL THE CIRCUITS WITH A TEST DEVICE WITH THE CORRECT POWER LOAD FOR EACH FUNCTION. A TEST DEVICE WITH LED'S CANNOT BE USED FOR THIS PURPOSE.

INFO



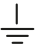




REINSTALL TRIM.

17



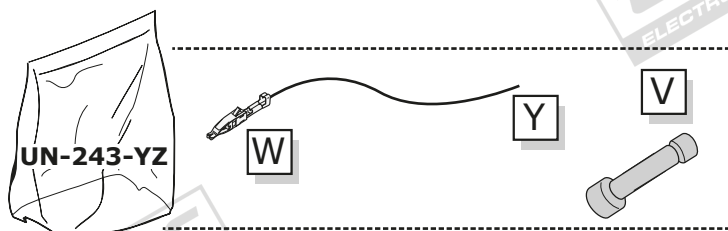
INFO

SOCKET CONNECTION

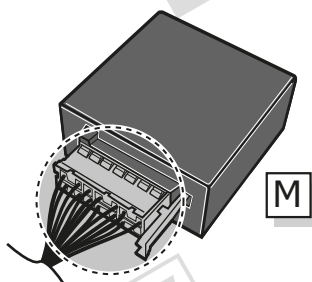
DIN/ISO 1724			 1-7				
	1/L	2	3/31	4/R	5/58-R	6/54	7/58-L
Pmax	21W	21W		21W	42W	3x21W	42W
Colour	Yellow	Blue	White	Green	Brown	Red	Black

UN-243-YZ Reverse lamp pre-wire extension

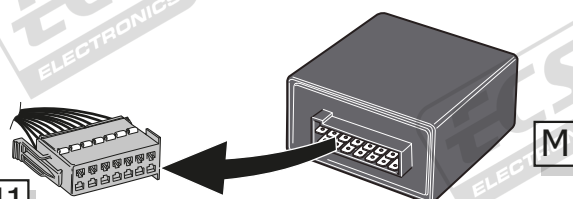
⚠ MAX = 21W



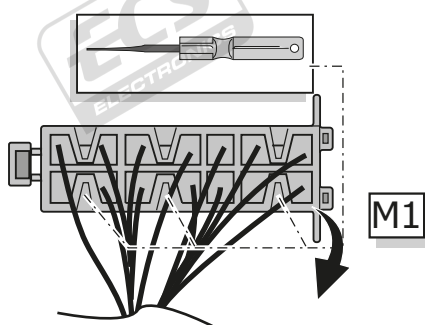
A



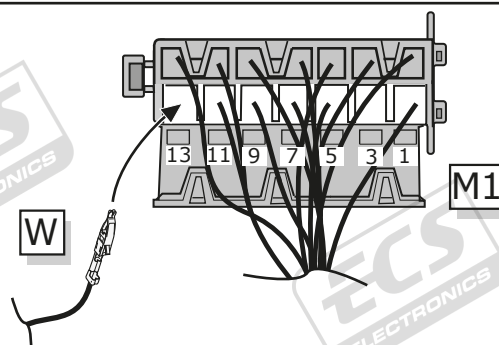
1



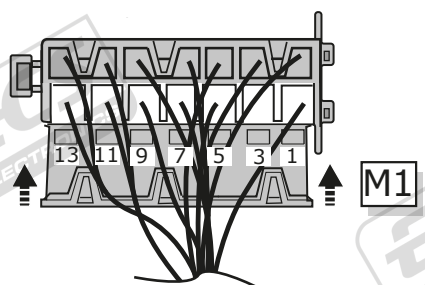
2



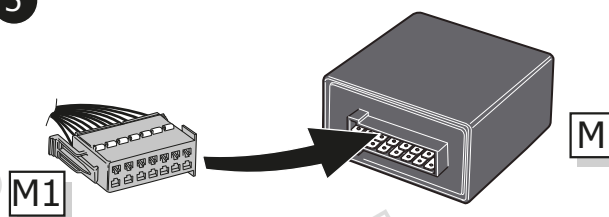
3



4



5



B

⚠ MAX = 21W

