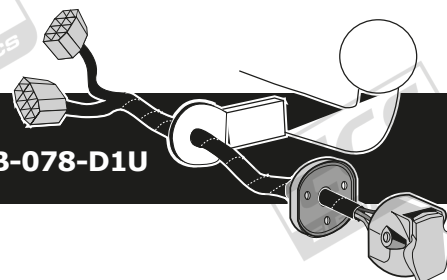


Mercedes M-Class W166 11/2011 >>
Mercedes GLE W166 09/2015 >> 02/2019
Mercedes GLE Coupe C292 07/2015 >> 03/2020

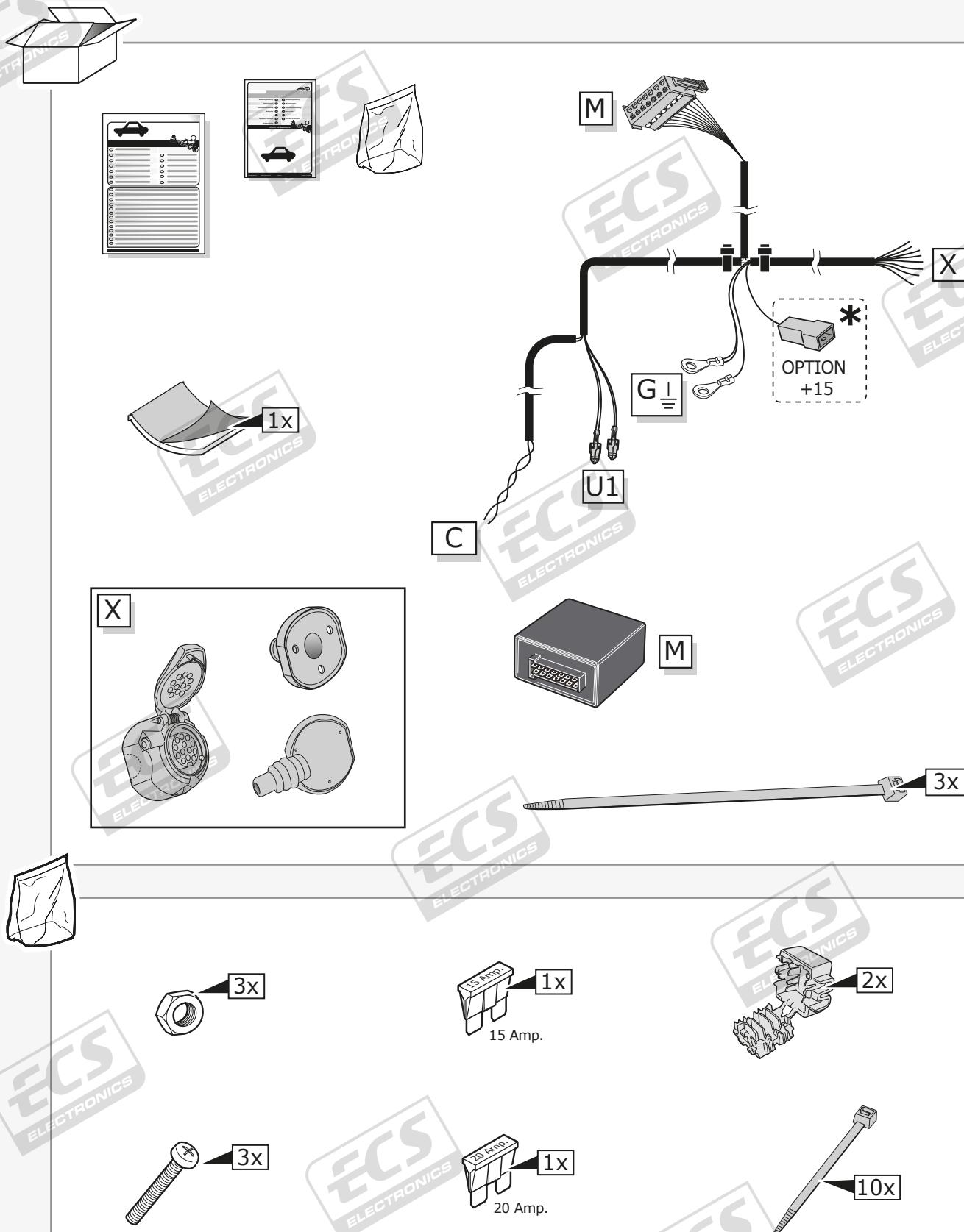
Partnr.: MB-078-D1U



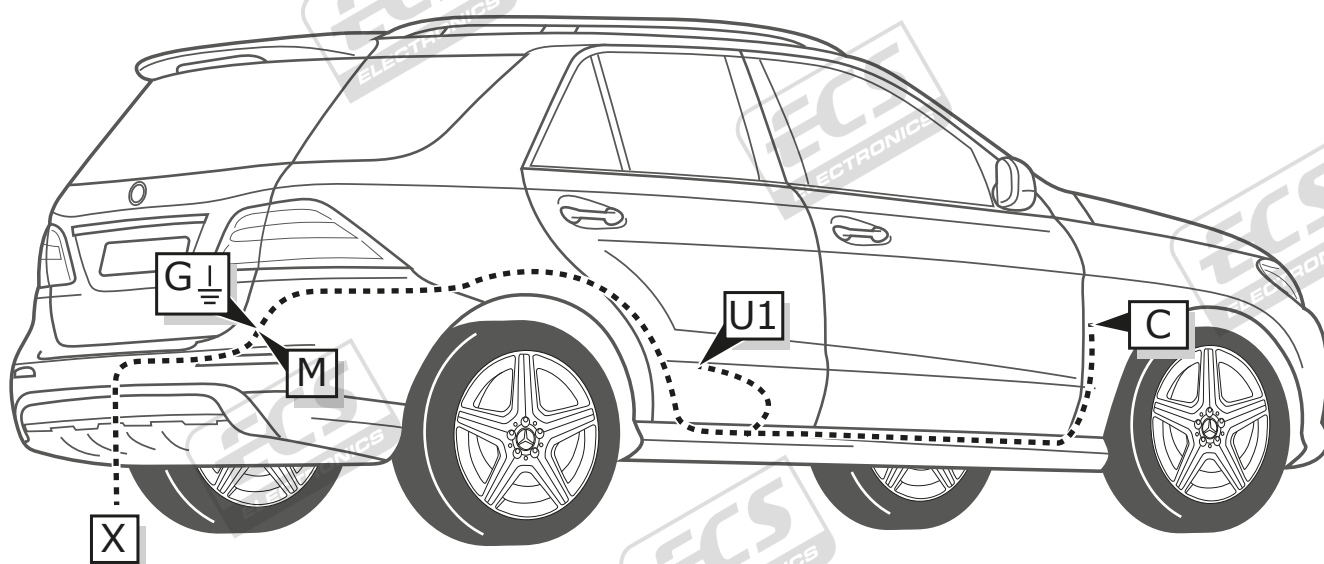
- Fitting instructions electric wiring kit tow bar with 13-P socket up to DIN/ISO Norm 11446.
- We would expressly point out that assembly not carried out properly by a competent installer will result in cancellation of any right to damage compensation, in particular those arising by virtue of the product liability act.
- Contents of these kits and their fitting manuals are subject to alteration without notice, please ensure that these instructions are read and fully understood before commencing installation.
- Do not overload circuits; the maximum loads per connection are detailed in this manual.
- Attention! Before Installation, please read this manual carefully and inform your customer to consult the vehicle owners manual to check for any vehicle modifications required before towing.
- In the event of functional problems, troubleshooting must be limited to about 0.5 hours, contact the technical support:
t.skinner@ecs-electronics.com / 07440 202 052.



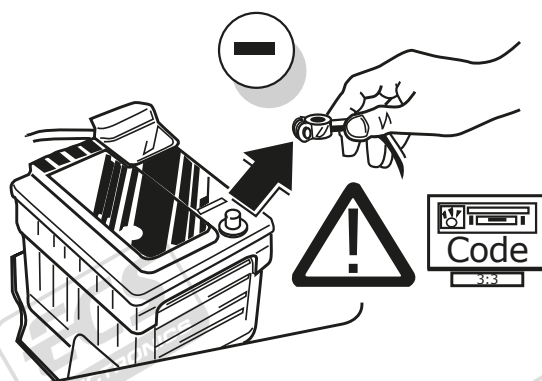
Part list



ROUTING

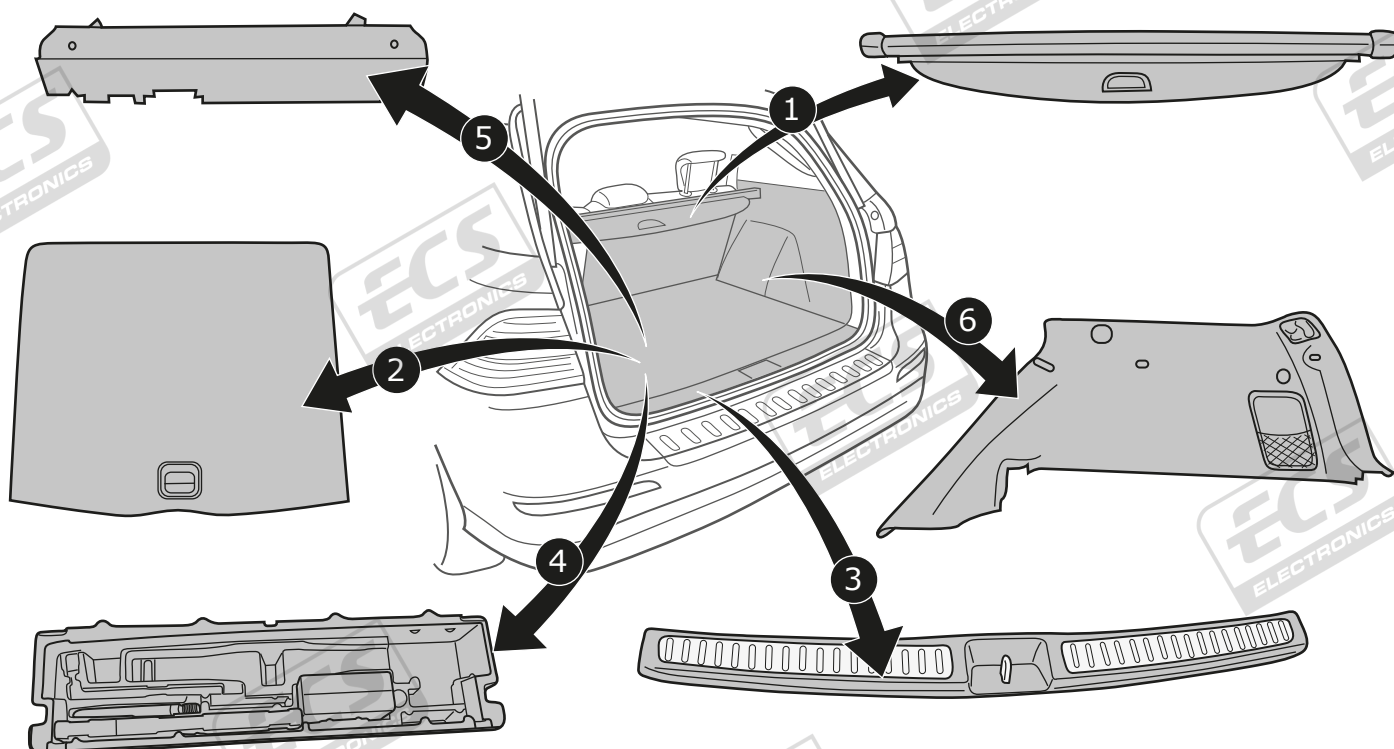


1



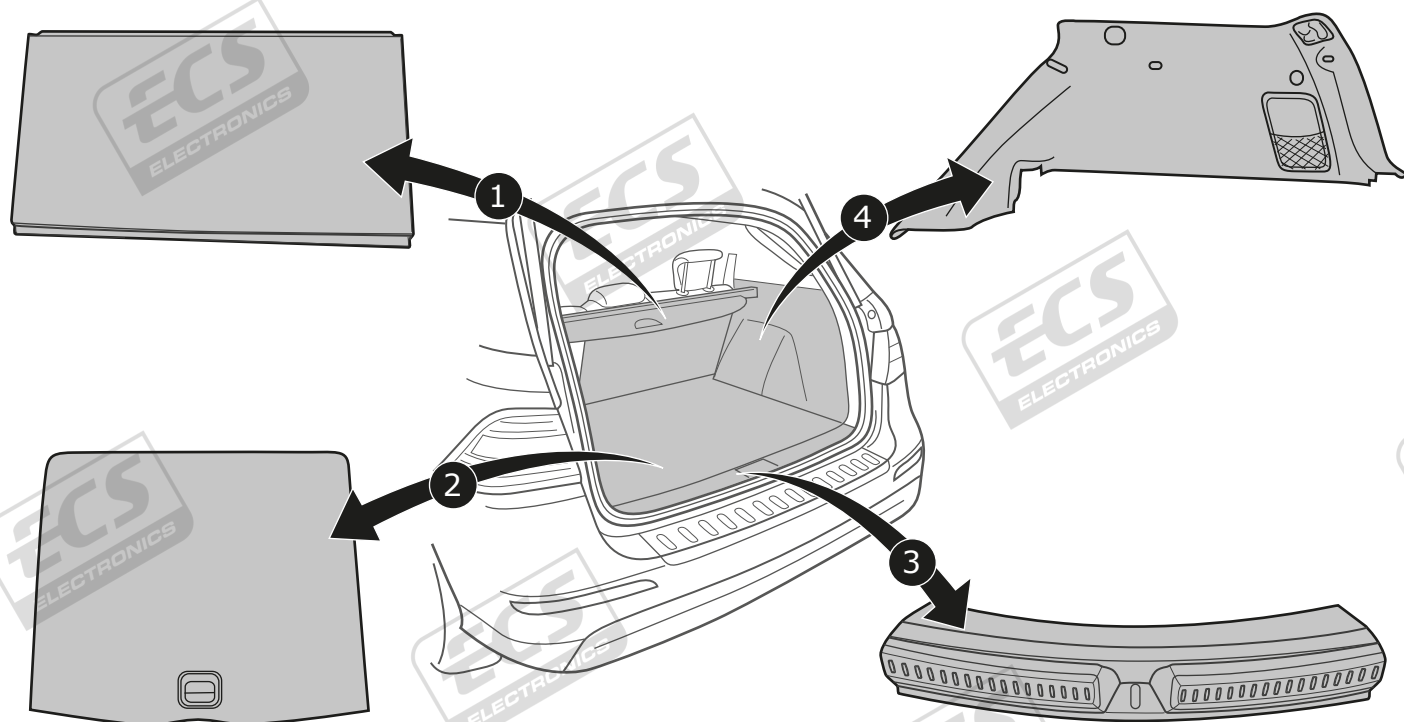
M-Class

2

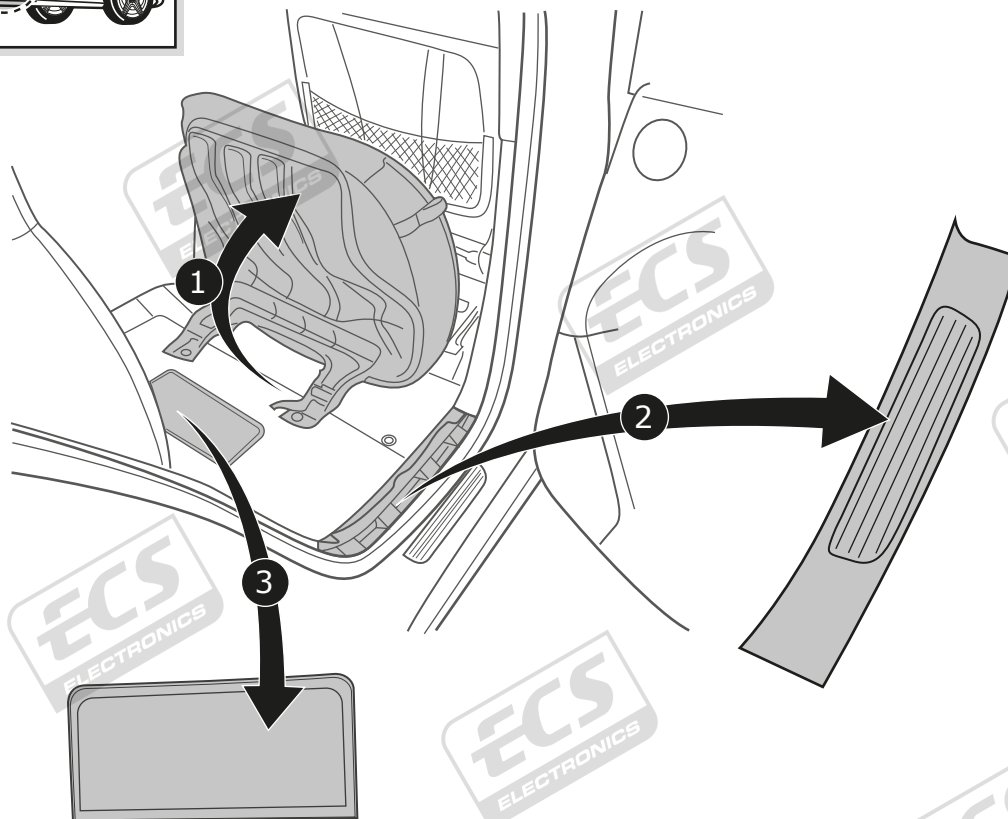
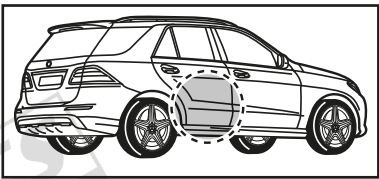


GLE-Class/ GLE Coupe

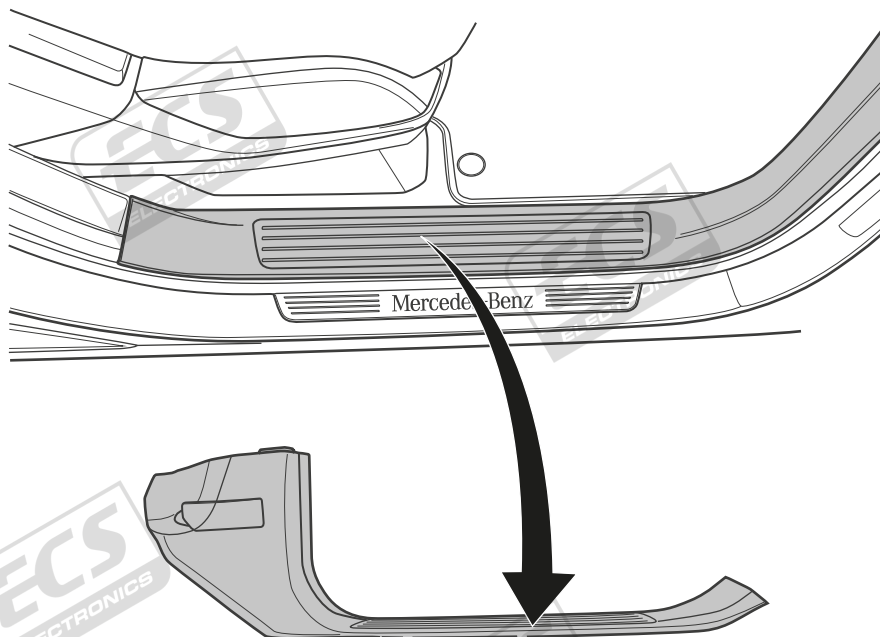
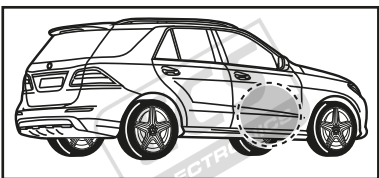
3



4

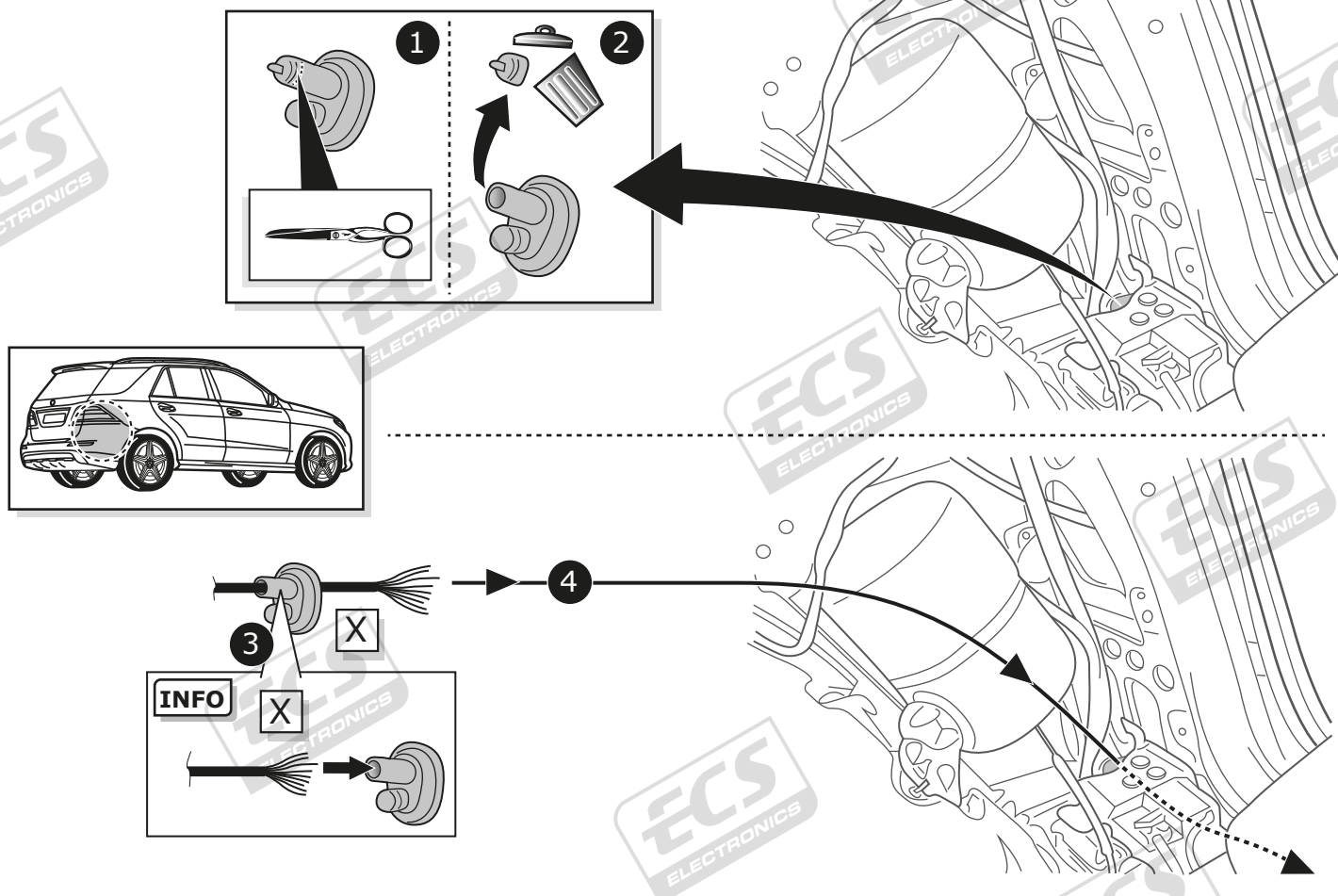


5



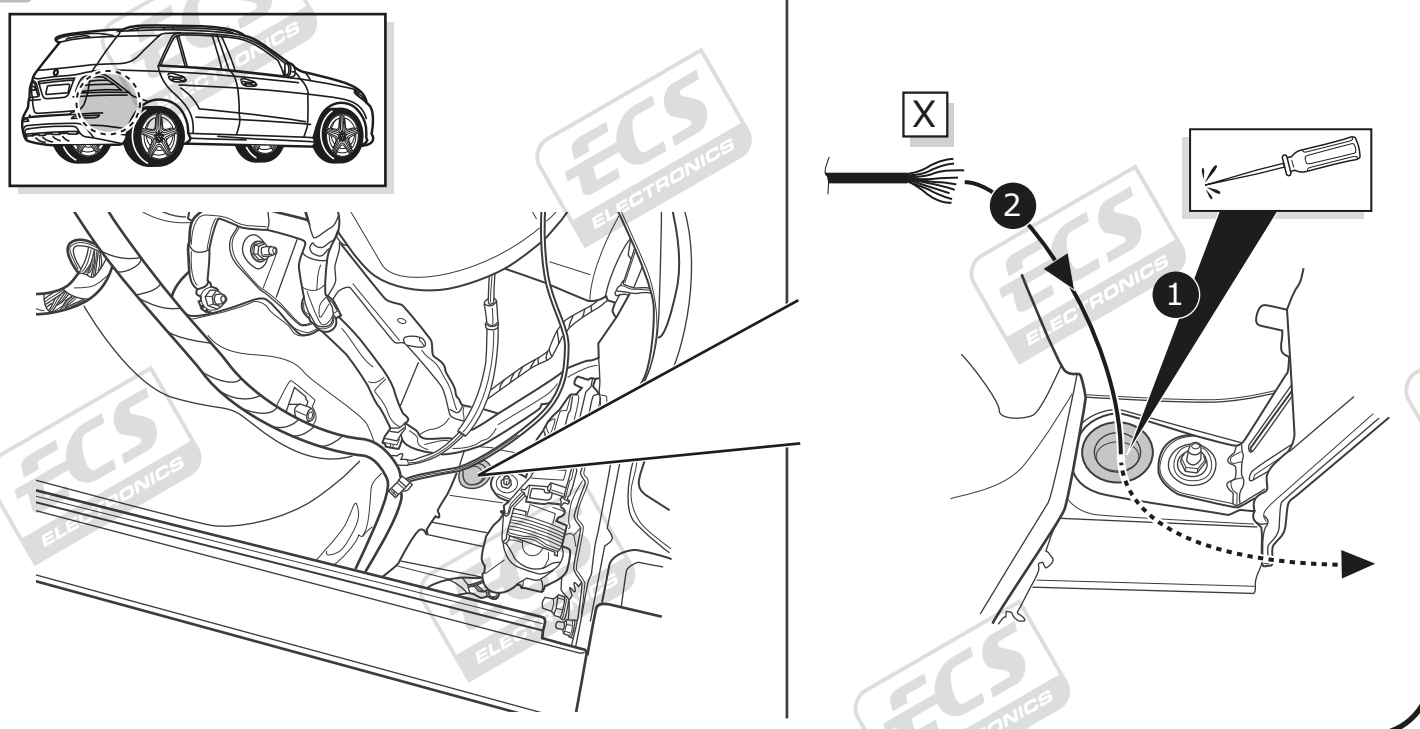
M-Class

6



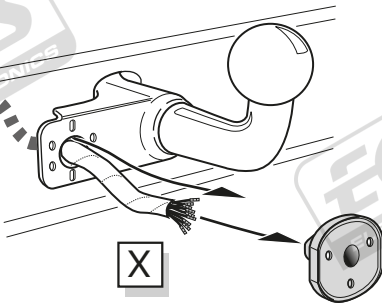
GLE-Class/ GLE Coupe

7

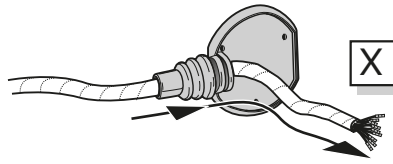


A

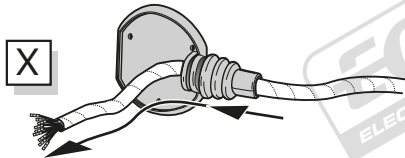
Option 1



Option 2



Option 3



INFO

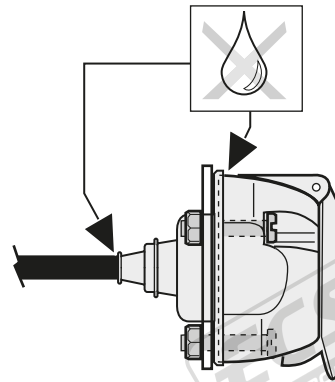
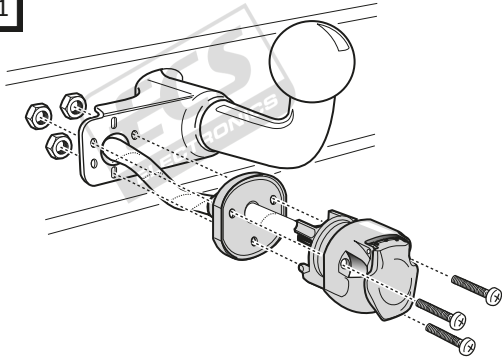
SOCKET CONNECTION



Pag. 13

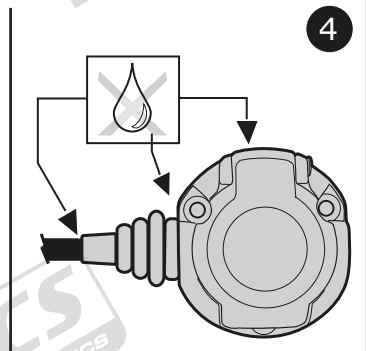
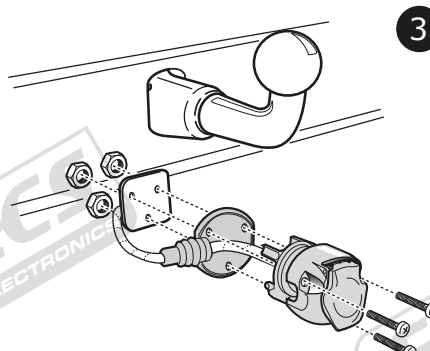
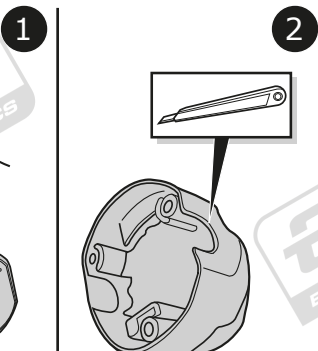
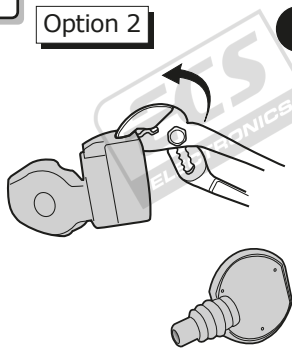
B

Option 1



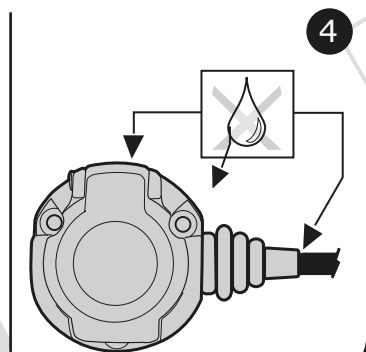
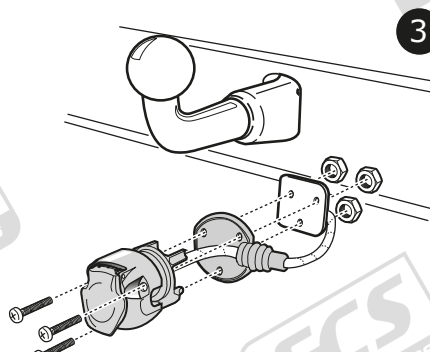
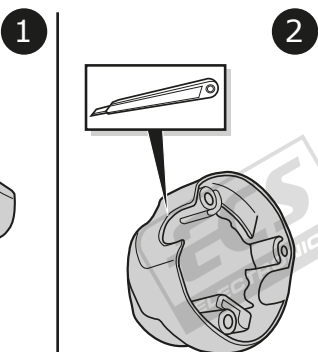
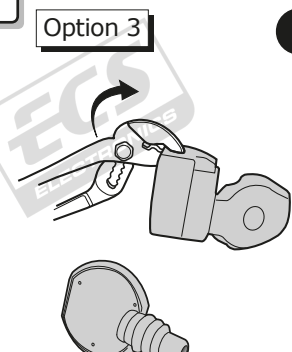
C

Option 2



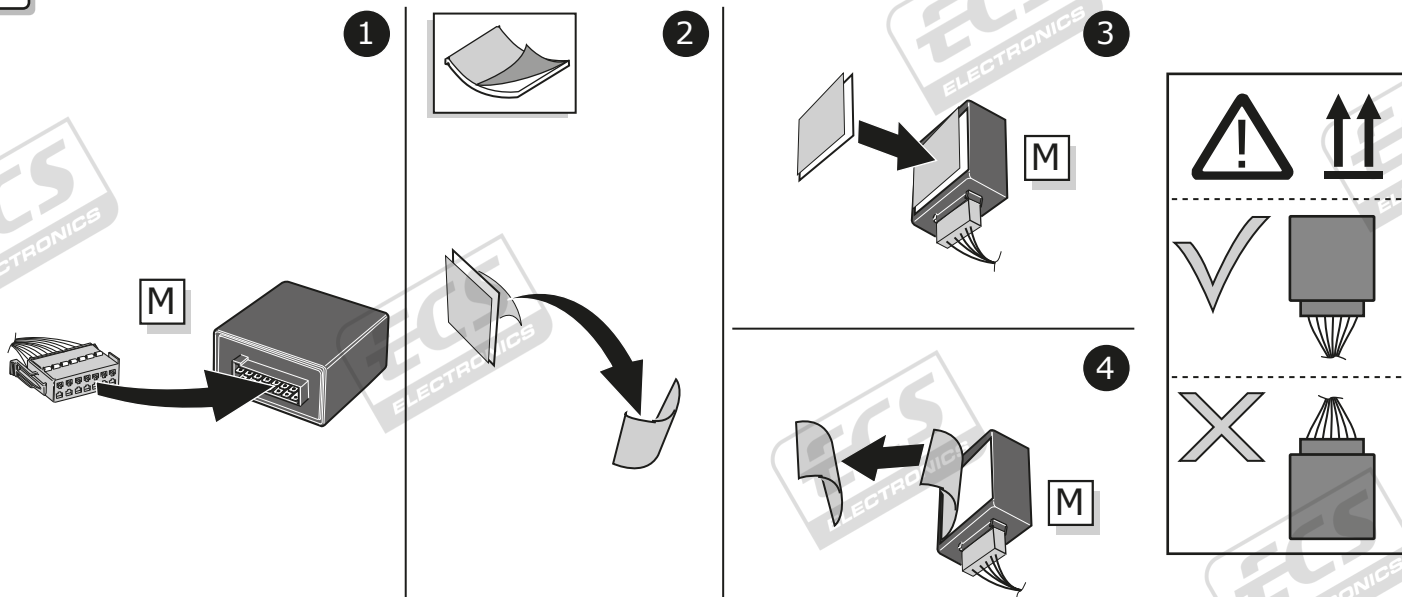
D

Option 3



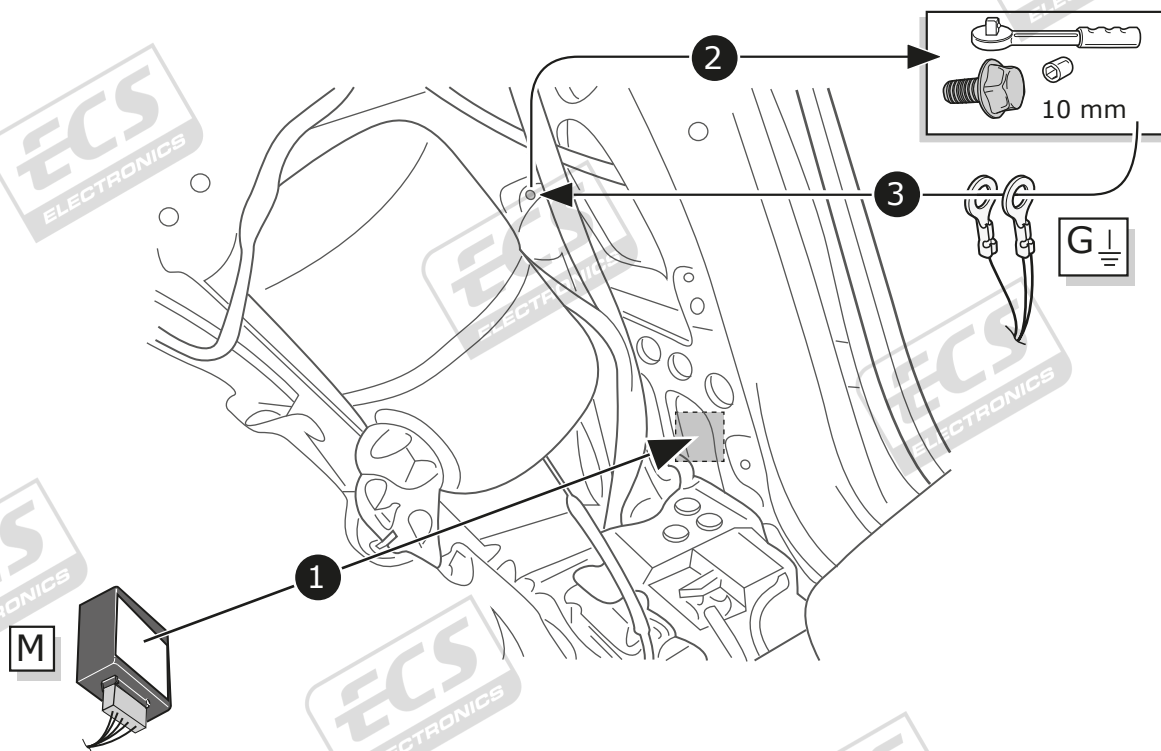
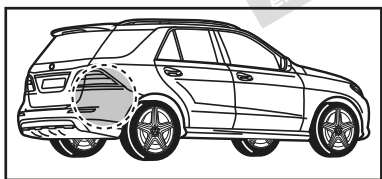
All Models

8

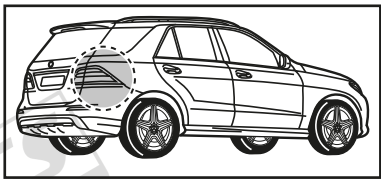


M-Class

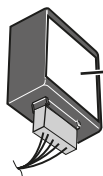
9



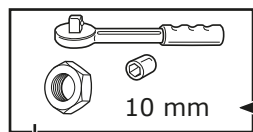
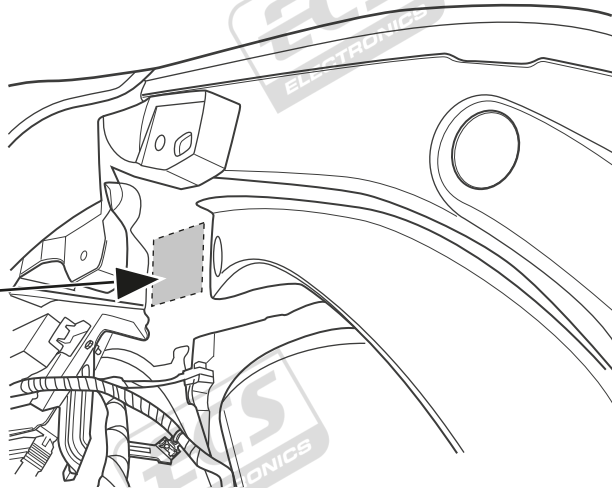
10



M



1

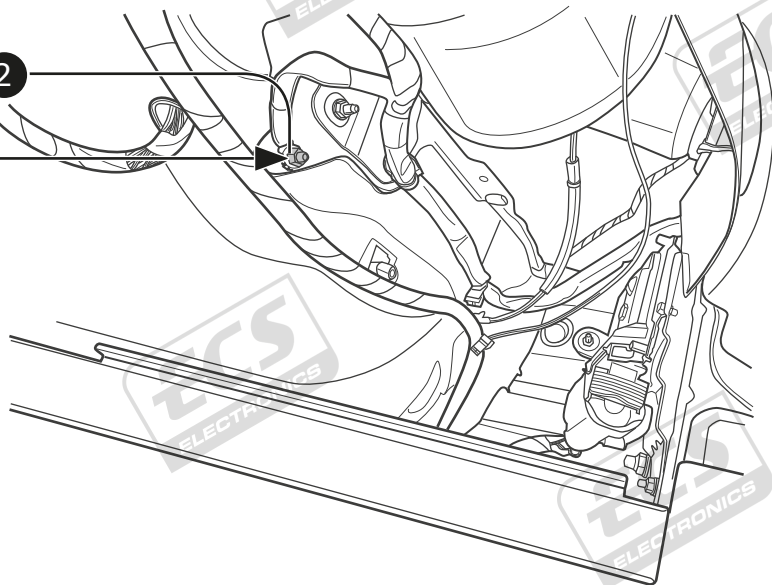
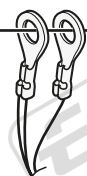


10 mm

2

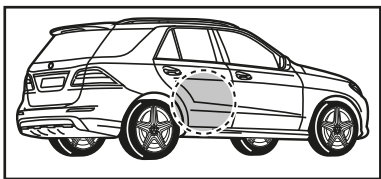
3

G



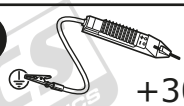
All Models

11

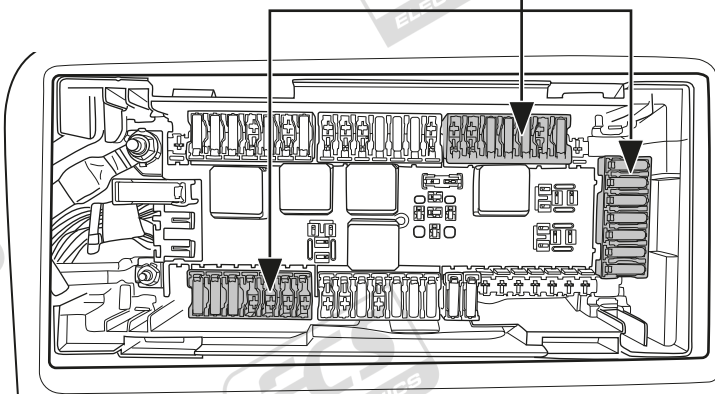


1 Choose free fuse position in connector.

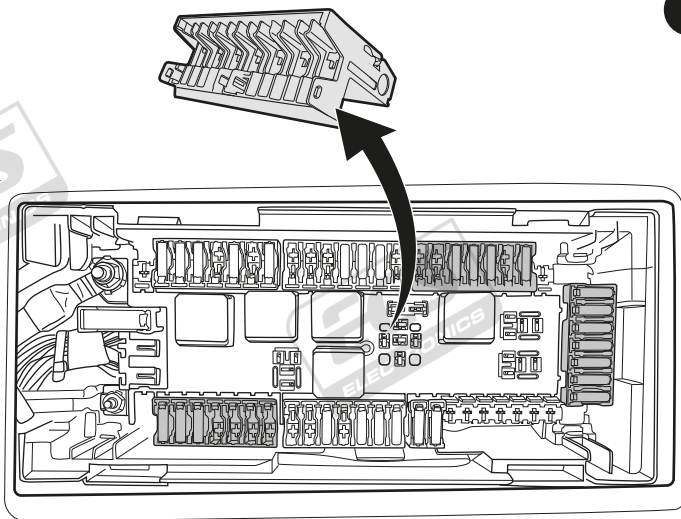
2



+30

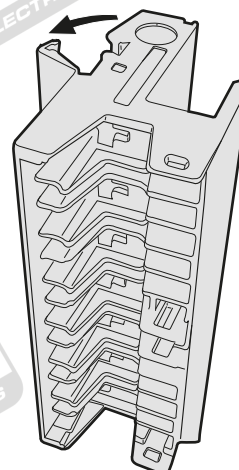


12

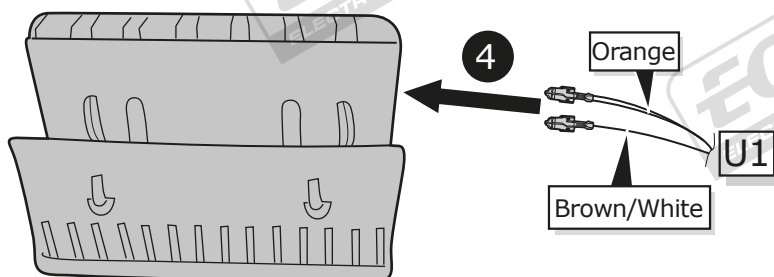


1

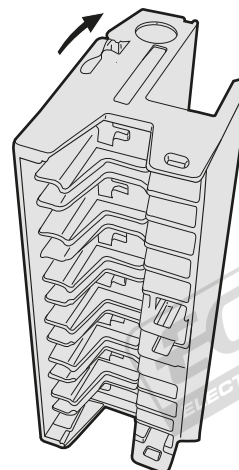
2



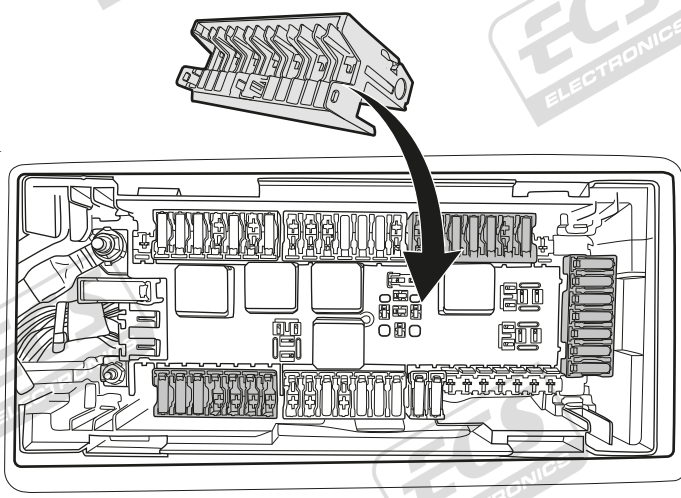
3 Choose free position +30



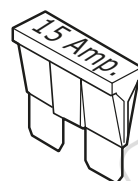
5



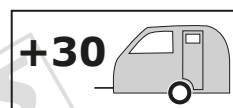
6



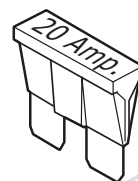
7



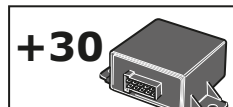
15 Amp.



Brown/White

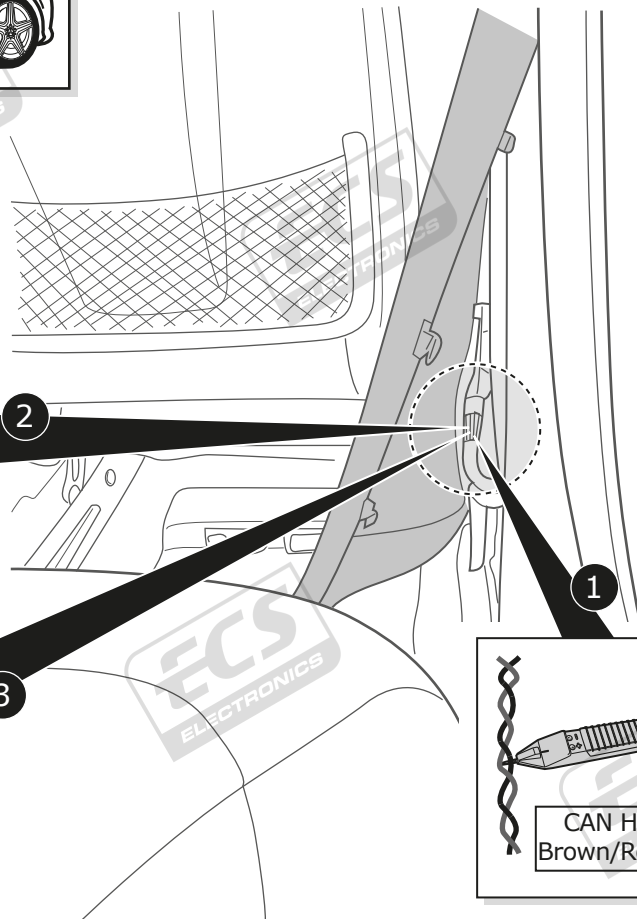
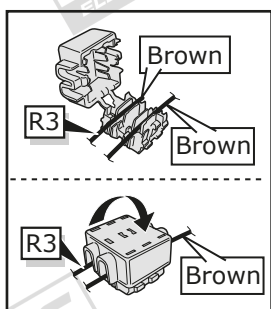
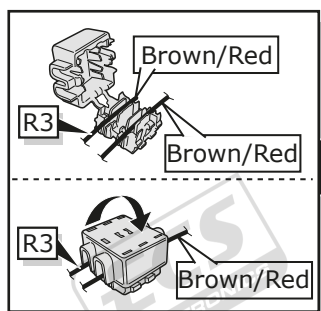
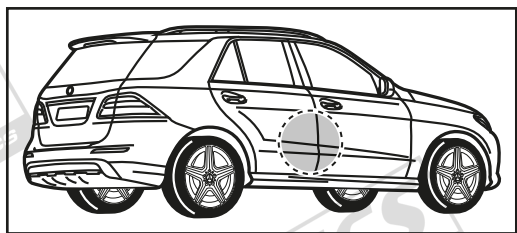


20 Amp.

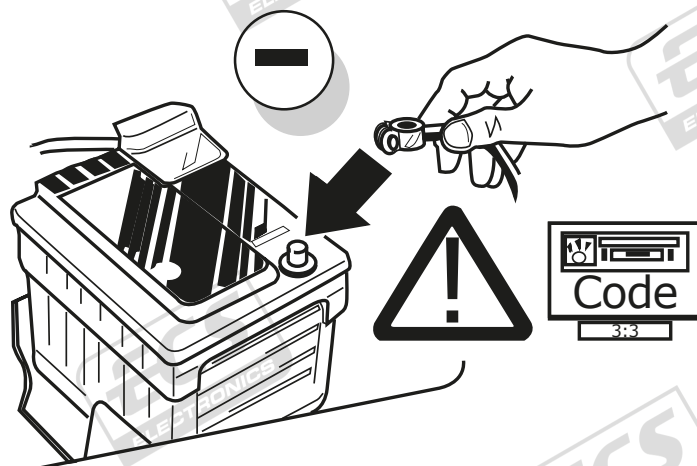


Orange

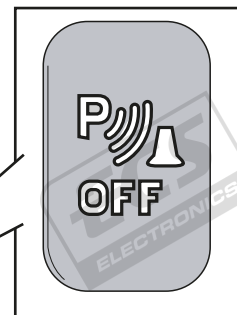
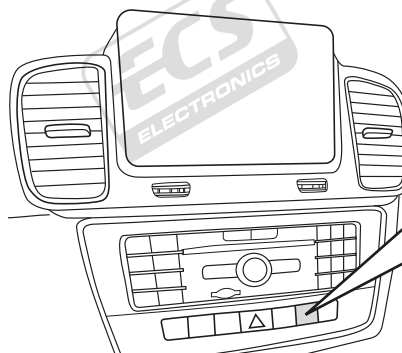
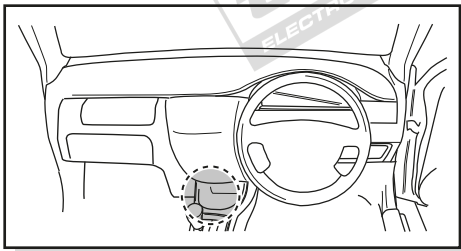
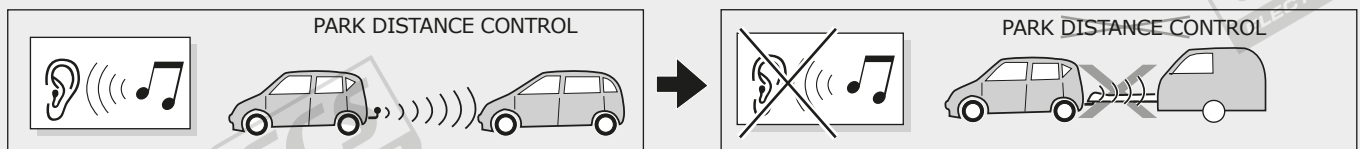
13



14



15



16

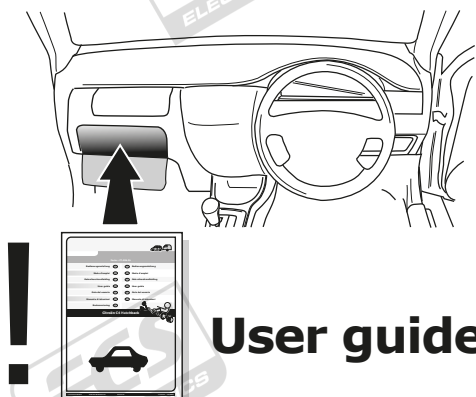


TEST ALL THE CIRCUITS WITH A TEST DEVICE WITH THE CORRECT POWER LOAD FOR EACH FUNCTION. A TEST DEVICE WITH LED'S CANNOT BE USED FOR THIS PURPOSE.

INFO

REINSTALL TRIM.

17



INFO

SOCKET CONNECTION

DIN/ISO 11446													
	1/L	2	3/31	4/R	5/58-R	6/54	7/58-L	8	9	10	11	12	13
Pmax	21W	21W		21W	42W	3x21W	42W	21W	180W/15Amp	180W/15Amp			
Colour	Yellow	Blue	White	Green	Brown	Red 1,00 mm ²	Black	Black/ Red	Brown/ White	Red 2,50 mm ²	White	-	White